



ST. JOHNS WOOD PARK

ST JOHNS WOOD, NW8

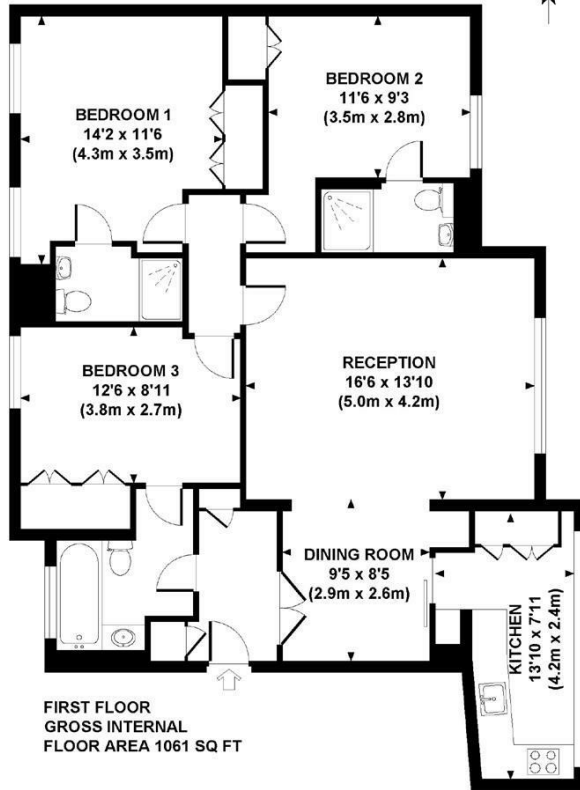
£1,300 PER WEEK

Heating & Hot Water Included *Pet friendly *

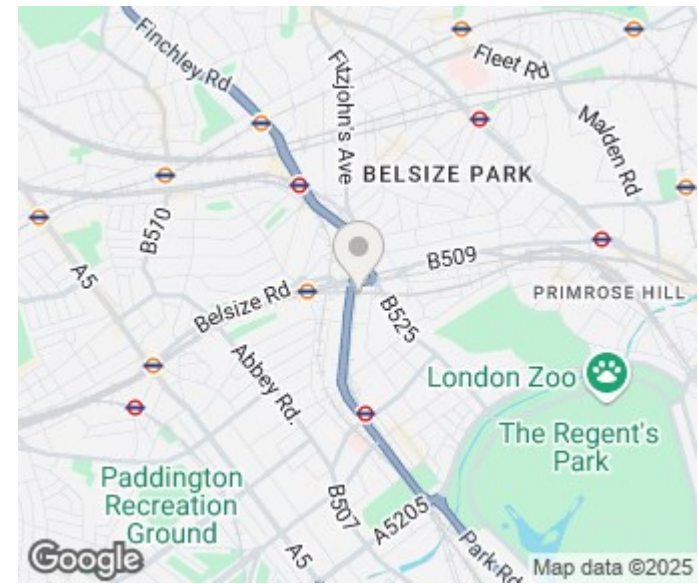
Offering sensational interior design and high quality finish over a substantial 1061 sq feet of space, this three bedroom, three Bathroom apartment located on the 4th floor of the popular and secure Boydell Court. Boasting an ideal location between Swiss Cottage and St Johns Wood with easy access to fantastic amenities offered by both makes for an amazing rental opportunity for Tenants valuing an elegant finish and secure, convenient location.

PMP | INTERNATIONAL

BOYDELL COURT
Approximate Gross Internal Area 1061 sq ft / 99 sq m



Although every attempt has been made to ensure accuracy, all measurements are approximate.
The floor plan's for illustrative purposes only and not to scale. Measured in accordance to RICS standards.
DE-PHOTOGRAPHY.NET



Energy Efficiency Rating		Current	Potential
Very energy efficient - lower running costs			
(92 plus) A			
(81-91) B			
(69-80) C		70	70
(55-68) D			
(39-54) E			
(21-38) F			
(1-20) G			
Not energy efficient - higher running costs			
England & Wales		EU Directive 2002/91/EC	

Agents Note: Whilst every care has been taken to prepare these particulars, they are for guidance purposes only. All measurements are approximate and are for general guidance purposes only and whilst every care has been taken to ensure their accuracy, they should not be relied upon and potential buyers/tenants are advised to recheck the measurements

London
PMP International
94 Belsize Lane
Belsize Park
London
NW3 5BE

020 7701 2878
info@pmpi.co.uk
www.pmpi.co.uk

PMP | INTERNATIONAL