

## BOYDELL COURT

ST JOHNS WOOD, NW8

£1,300 PER WEEK

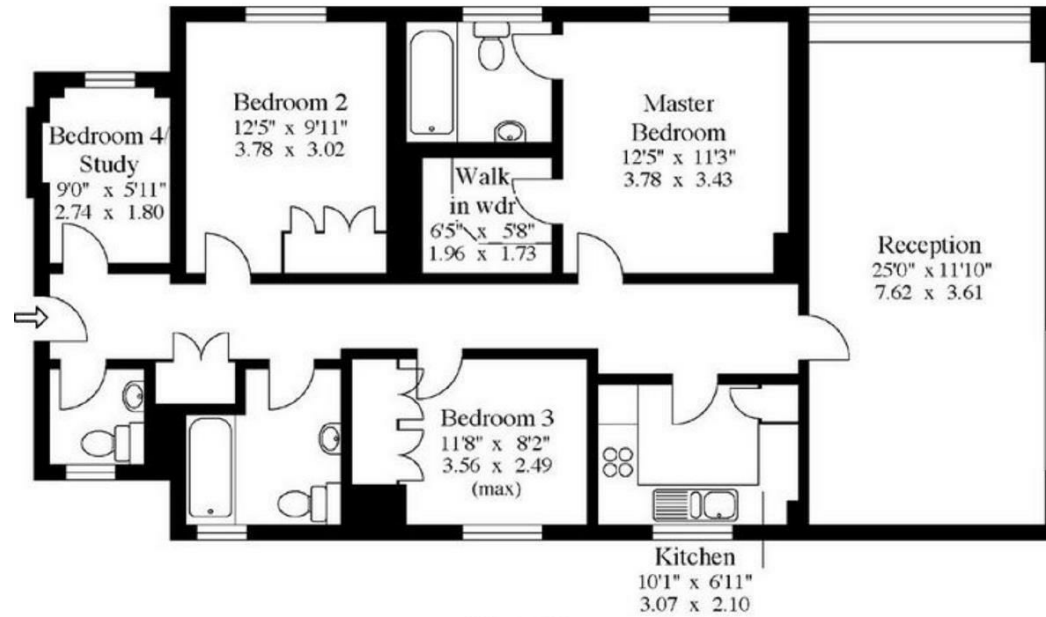
PMP international are pleased to present to you this stunningly refurbished 3/4 bedroom apartment situated in a stunning 24 hours portered block in St Johns Wood. Boydell Court is a fabulously located purpose built block in the centre of St Johns Wood. The flat boasts 3 spacious bedrooms plus one study room which could also be used as a bedroom, 1 large reception room and fully fitted kitchen fitted with integrated appliances. Short distance from St John's Wood & Swiss Cottage (Jubilee Line). Please call to arrange a viewing.

**PMP** | INTERNATIONAL

St John's Wood Park,  
NW8.

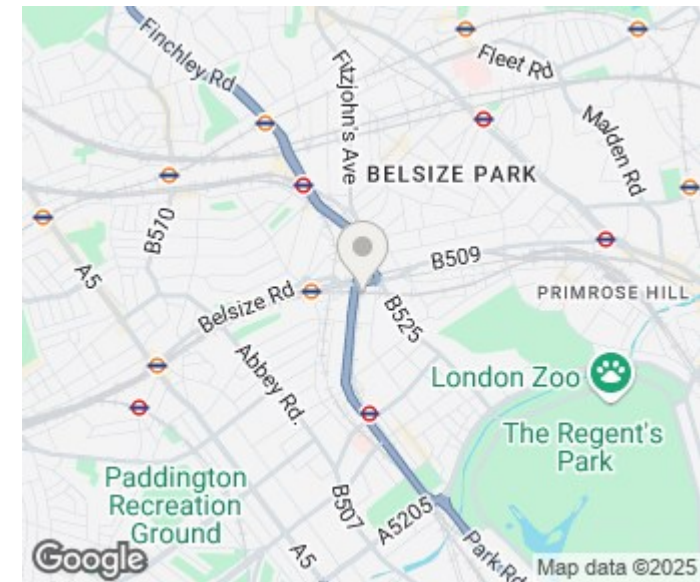


Approx Gross Floor Area = 1181 Sq. Feet  
= 168.2 Sq. Metres



First Floor

For illustrative purposes only. Not to scale.  
Prepared by Making Plans Ltd. Tel : 0113 258 7607



Energy Efficiency Rating		
	Current	Potential
Very energy efficient - lower running costs		
(92 plus) A		
(81-91) B		
(69-80) C		
(55-68) D	67	69
(39-54) E		
(21-38) F		
(1-20) G		
Not energy efficient - higher running costs		
England & Wales	EU Directive 2002/91/EC	

Agents Note: Whilst every care has been taken to prepare these particulars, they are for guidance purposes only. All measurements are approximate and are for general guidance purposes only and whilst every care has been taken to ensure their accuracy, they should not be relied upon and potential buyers/tenants are advised to recheck the measurements

London  
PMP International  
94 Belsize Lane  
Belsize Park  
London  
NW3 5BE

020 7701 2878  
info@pmpi.co.uk  
www.pmpi.co.uk

**PMP** | INTERNATIONAL