



PADDINGTON BASIN

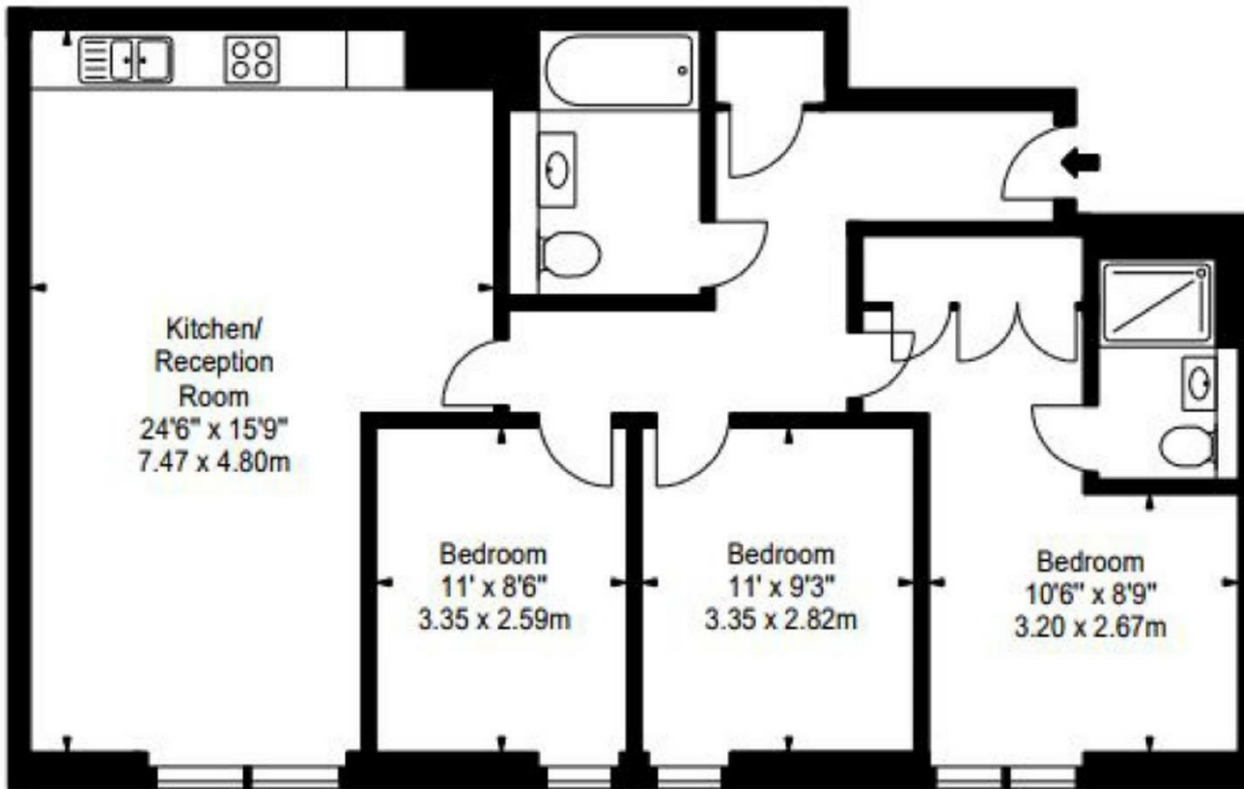
PADDINGTON, W2

£1,640 PER WEEK

A stunning 3 bedroom 2 bathroom apartment located on the 8th floor within this prestigious development set within the heart of West End Quay. The apartment comprises of a spacious open-plan kitchen/reception room, 3 double bedrooms, 2 bathrooms (master with an en-suite) and ample storage space throughout.

The apartment is located in one of W2's most admired address which features a concierge service, lift service, and secure underground parking. The apartment offers easy access to superb transport links such as Paddington Train Station (Bakerloo, Hammersmith & City, Circle, District lines and Heathrow) Edgware Road (Circle, District and Bakerloo lines).

PMP | INTERNATIONAL



Energy Efficiency Rating		
	Current	Potential
Very energy efficient - lower running costs		
(92 plus) A		
(81-91) B	84	84
(69-80) C		
(55-68) D		
(39-54) E		
(21-38) F		
(1-20) G		
Not energy efficient - higher running costs		
England & Wales	EU Directive 2002/91/EC	

Agents Note: Whilst every care has been taken to prepare these particulars, they are for guidance purposes only. All measurements are approximate and are for general guidance purposes only and whilst every care has been taken to ensure their accuracy, they should not be relied upon and potential buyers/tenants are advised to recheck the measurements

London
PMP International
1 Northway's Parade Finchley Road
London
NW3 5EN

020 7701 2878
info@pmpi.co.uk
www.pmpi.co.uk

PMP | INTERNATIONAL