



MERCHANT SQUARE EAST

LONDON, W2

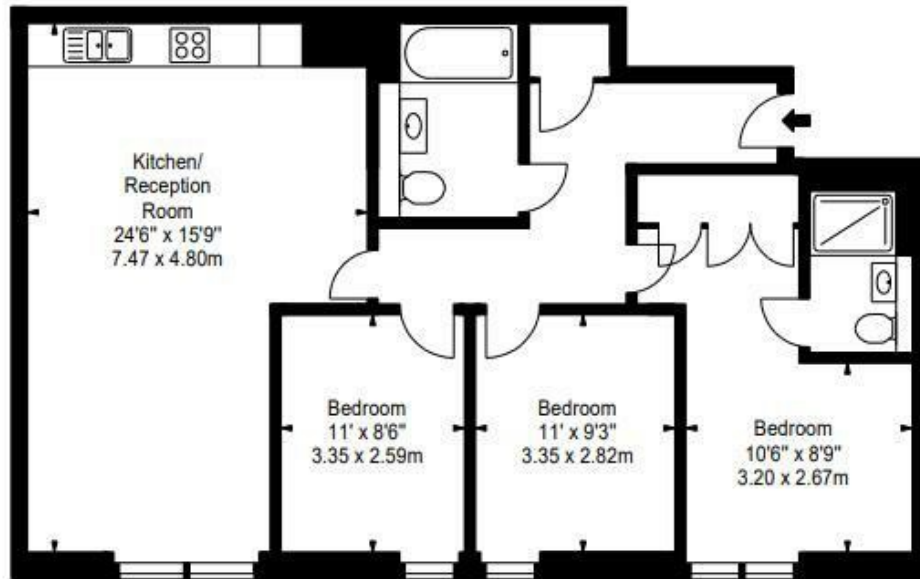
£1,595

A stunning interior designed apartment with water views, set within the heart of the Paddington Basin and close to the popular West End Quay.

It comprises a beautiful reception room with superb views, a modern fully fitted open plan kitchen, three bedrooms, two bathrooms and ample storage space. The apartment is situated on the fourth floor of this prestigious building, which features concierge, lift service, and free and secure underground parking.

The apartment offers easy access to superb transport links such as Paddington Train Station (Elizabeth line, Bakerloo, Hammersmith & City, Circle, District lines and Heathrow) Edgware Road (Circle, District and Bakerloo lines).

PMP | INTERNATIONAL



Energy Efficiency Rating		
	Current	Potential
Very energy efficient - lower running costs		
(92 plus) A		
(81-91) B	85	85
(69-80) C		
(55-68) D		
(39-54) E		
(21-38) F		
(1-20) G		
Not energy efficient - higher running costs		
England & Wales	EU Directive 2002/91/EC	

Agents Note: Whilst every care has been taken to prepare these particulars, they are for guidance purposes only. All measurements are approximate and are for general guidance purposes only and whilst every care has been taken to ensure their accuracy, they should not be relied upon and potential buyers/tenants are advised to recheck the measurements

London
PMP International
1 Northway's Parade Finchley Road
London
NW3 5EN

020 7701 2878
info@pmpi.co.uk
www.pmpi.co.uk

PMP | INTERNATIONAL