



PARK ROAD

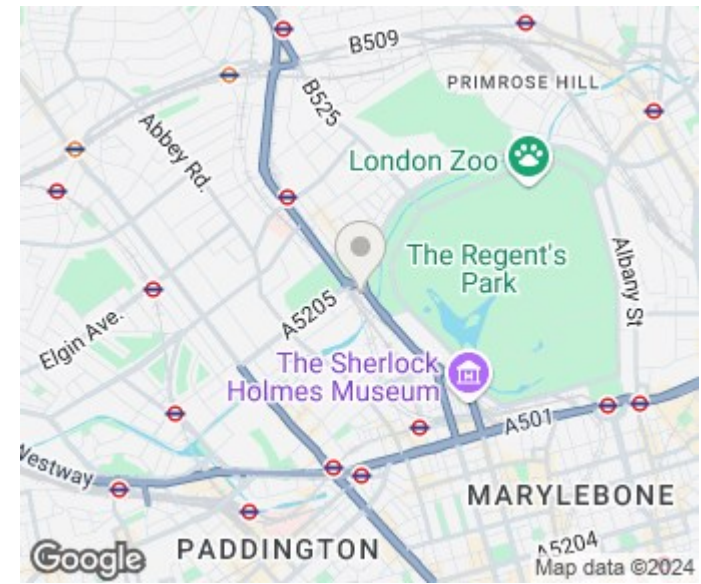
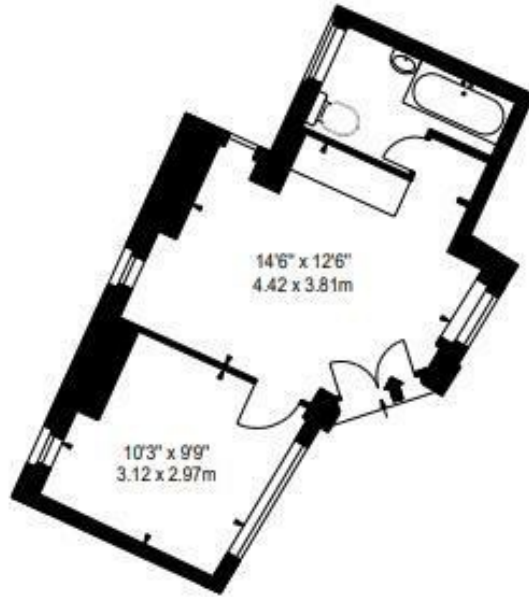
ST JOHNS WOOD, NW8


£580 PER WEEK

Spacious one bed flat available in the popular and well located block, Strathmore Court. The flat comprises of 1 double bedroom, spacious reception room, fully fitted kitchen and a bathroom suite.

Strathmore Court benefits from porterage and is only a 10 minute walk to either Baker Street Tube Station (Jubilee), St Johns Wood (Jubilee), surrounding cafés, bars and restaurants are also within a short walk. Available now, viewings are highly recommended.

PMP | INTERNATIONAL



Energy Efficiency Rating		
	Current	Potential
<i>Very energy efficient - lower running costs</i>		
(92 plus) A		
(81-91) B		
(69-80) C		
(55-68) D		
(39-54) E		
(21-38) F		
(1-20) G	1	1
<i>Not energy efficient - higher running costs</i>		
England & Wales	EU Directive 2002/91/EC 	

Agents Note: Whilst every care has been taken to prepare these particulars, they are for guidance purposes only. All measurements are approximate and are for general guidance purposes only and whilst every care has been taken to ensure their accuracy, they should not be relied upon and potential buyers/tenants are advised to recheck the measurements

London
 PMP International
 1 Northway's Parade Finchley Road
 London
 NW3 5EN

020 7701 2878
 info@pmpi.co.uk
 www.pmpi.co.uk

PMP | INTERNATIONAL