



## FULHAM ROAD

LONDON, SW3

£1,100

This large and bright newly interior decorated two double bedroom apartment, located in the heart of Chelsea, looks directly out on to the private communal gardens.

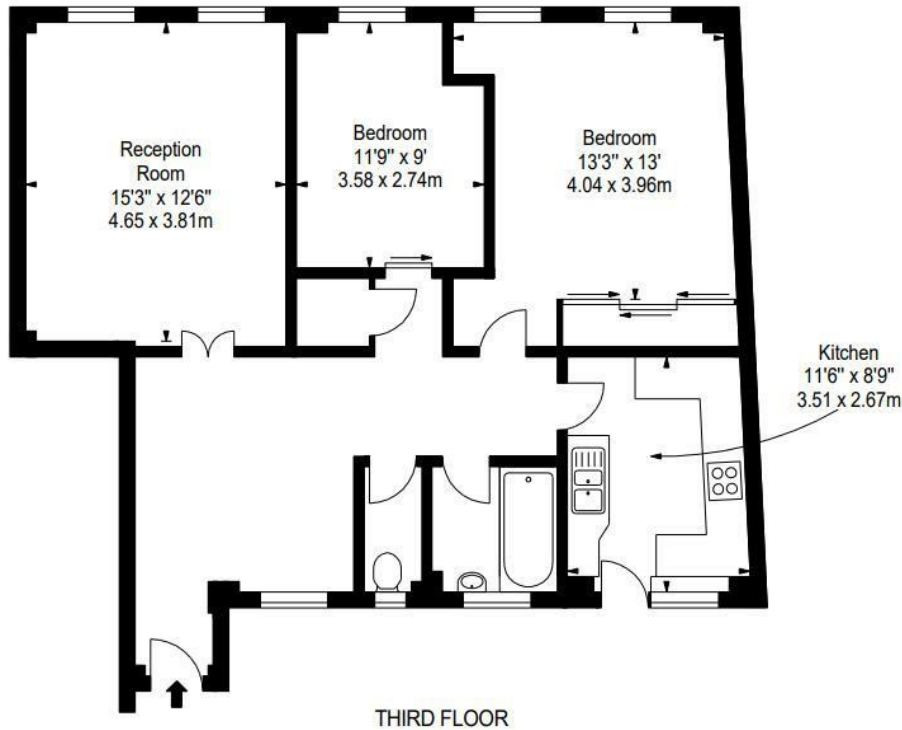
The apartment comprises a spacious reception room, two double bedrooms with ample storage, a bathroom with a separate WC and a fully fitted kitchen.

The property is available to rent furnished or unfurnished.

**PMP** | INTERNATIONAL

APPROX. GROSS INTERNAL AREA\*  
881 Ft<sup>2</sup> - 81.84 M<sup>2</sup>

ILLUSTRATION FOR IDENTIFICATION PURPOSES ONLY. NOT TO SCALE  
\* As Defined by RICS - Code of Measuring Practice



Energy Efficiency Rating		Current	Potential
Very energy efficient - lower running costs			
(92 plus) A			
(81-91) B			
(69-80) C		74	
(55-68) D			
(39-54) E			
(21-38) F			
(1-20) G			
Not energy efficient - higher running costs			
England & Wales		EU Directive 2002/91/EC	

Agents Note: Whilst every care has been taken to prepare these particulars, they are for guidance purposes only. All measurements are approximate and are for general guidance purposes only and whilst every care has been taken to ensure their accuracy, they should not be relied upon and potential buyers/tenants are advised to recheck the measurements

London  
PMP International  
1 Northway's Parade Finchley Road  
London  
NW3 5EN

020 7701 2878  
info@pmpi.co.uk  
www.pmpi.co.uk

**PMP** | INTERNATIONAL