



NOTTINGHAM TERRACE

LONDON, NW1

£1,199,273

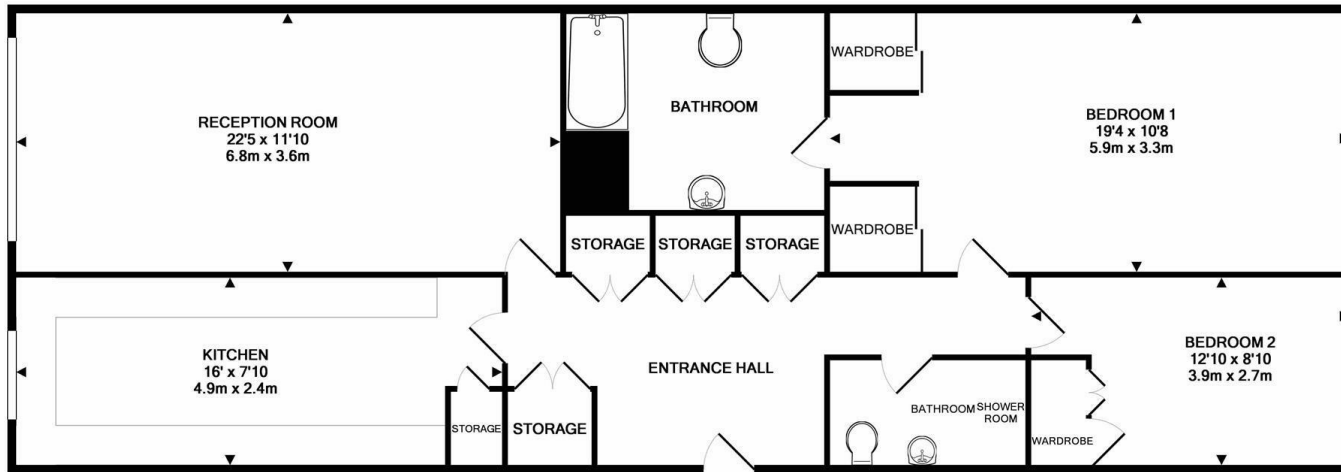
LEASEHOLD

PMP International is proud to offer this beautiful 2 bedroom apartment in a portered purpose built block located on the outer circle of Regents Park and within close proximity to Marylebone High Street. The property features fitted kitchen, 2 good sized bedrooms, family bathroom suite and en-suite to the master benefiting from storage options throughout.

The property benefits from 24 hour security and within short walking distance to local amenities of Marylebone High Street and transport links. Seconds from Baker Street Station. Offered in good condition.

Viewings are highly recommended.

PMP | INTERNATIONAL



TOTAL APPROX. FLOOR AREA 934 SQ.FT. (86.8 SQ.M.)

Whilst every attempt has been made to ensure the accuracy of the floor plan contained here, measurements of doors, windows, rooms and any other items are approximate and no responsibility is taken for any error, omission, or mis-statement. This plan is for illustrative purposes only and should be used as such by any prospective purchaser. The services, systems and appliances shown have not been tested and no guarantee as to their operability or efficiency can be given
 Made with Metropix ©2017



Energy Efficiency Rating		
	Current	Potential
Very energy efficient - lower running costs		
(92 plus) A		
(81-91) B		
(69-80) C		
(55-68) D		
(39-54) E		
(21-38) F		
(1-20) G		
Not energy efficient - higher running costs		
England & Wales	EU Directive 2002/91/EC	

Agents Note: Whilst every care has been taken to prepare these particulars, they are for guidance purposes only. All measurements are approximate and are for general guidance purposes only and whilst every care has been taken to ensure their accuracy, they should not be relied upon and potential buyers/tenants are advised to recheck the measurements

London
 PMP International
 1 Northway's Parade Finchley Road
 London
 NW3 5EN

020 7701 2878
 info@pmpi.co.uk
 www.pmpi.co.uk

PMP | INTERNATIONAL