



ST. JOHNS WOOD PARK LONDON, NW8

£1,500

A beautifully designed three double bedroom, three bathroom apartment furnished to a high standard on the first floor, located in a secure development within easy reach of St Johns Wood and Swiss Cottage.

Comprising of a spacious open plan reception, dining room and German designed kitchen, three double bedrooms (two en-suites) and family bathroom. Further benefits include air conditioning throughout, multi-jet showers, alarm and video entry phone.

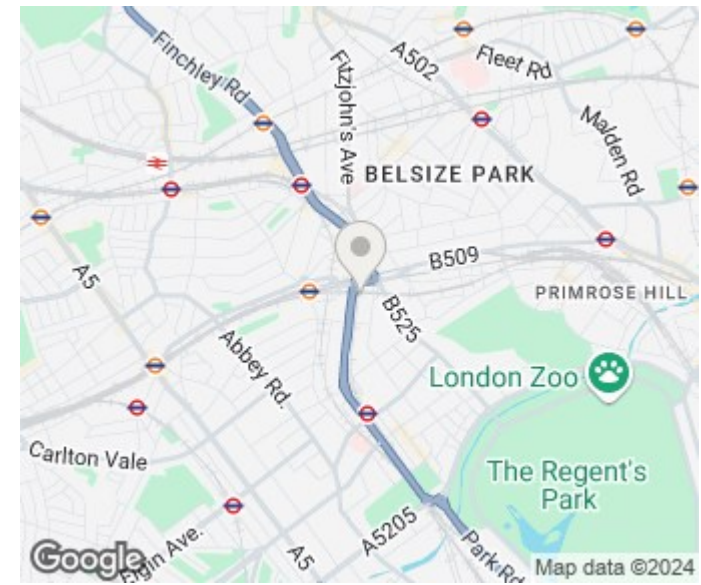
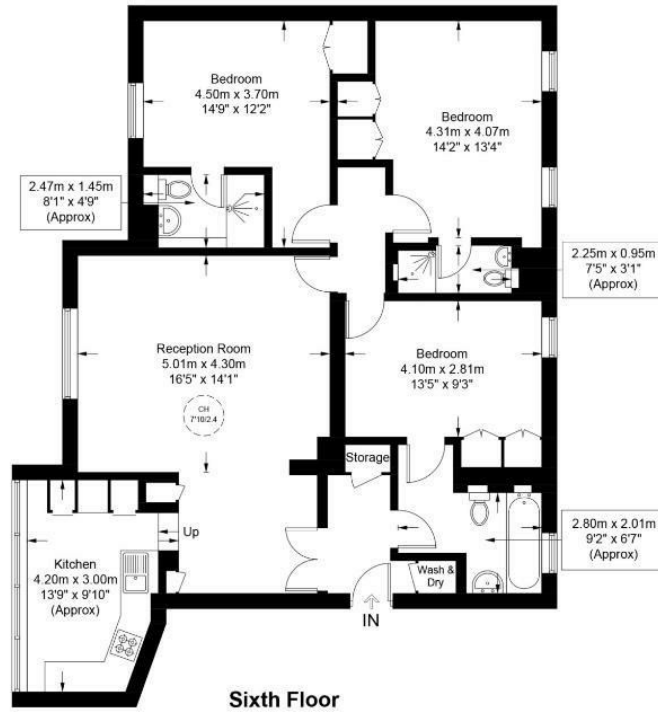
The Development further boasts an on-site porter, double glazed windows, lift access and secure off street parking.

Please note that photos are of a very similar property.

PMP | INTERNATIONAL

Boydell Court, NW8

Approximate Gross Internal Area = 1132 sq ft / 105.2 sq m



Energy Efficiency Rating		
	Current	Potential
Very energy efficient - lower running costs		
(92 plus) A		
(81-91) B		
(69-80) C		
(55-68) D		
(39-54) E		
(21-38) F		
(1-20) G		
Not energy efficient - higher running costs		
England & Wales	EU Directive 2002/91/EC	

Agents Note: Whilst every care has been taken to prepare these particulars, they are for guidance purposes only. All measurements are approximate and are for general guidance purposes only and whilst every care has been taken to ensure their accuracy, they should not be relied upon and potential buyers/tenants are advised to recheck the measurements

London
PMP International
1 Northway's Parade Finchley Road
London
NW3 5EN

020 7701 2878
info@pmpi.co.uk
www.pmpi.co.uk

PMP | INTERNATIONAL