



## FULHAM ROAD

CHELSEA, SW3

£1,050 PER WEEK

Located in the heart of Chelsea we are pleased to offer this spacious, second floor, two double bedroom (696 sq ft) apartment.

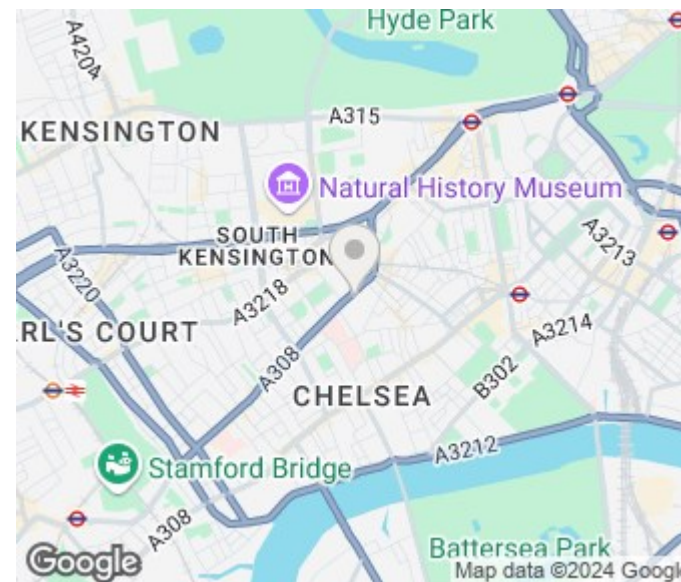
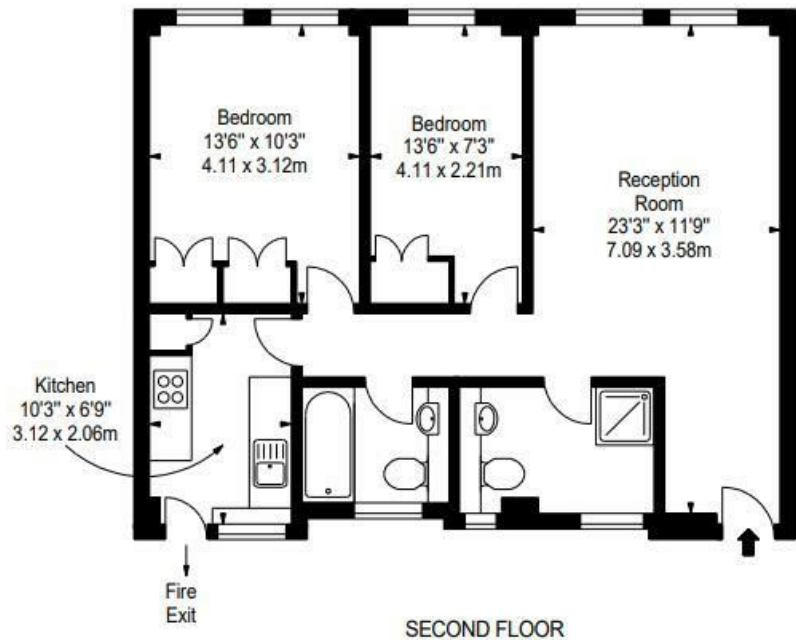
The flat comprises of two double bedrooms, and a good sized reception/dining room with views over the communal garden to the rear. The flat also benefits from two bathrooms, one shower room and another well proportioned bathroom, to include a shower over bath.

**PMP** | INTERNATIONAL

### 30 PELHAM COURT, SW3

APPROX. GROSS INTERNAL AREA \*  
696 Ft<sup>2</sup> - 64.66 M<sup>2</sup>

ILLUSTRATION FOR IDENTIFICATION PURPOSES ONLY. NOT TO SCALE  
\* As Defined by RICS - Code of Measuring Practice



Energy Efficiency Rating		
	Current	Potential
Very energy efficient - lower running costs		
(92 plus) <b>A</b>		
(81-91) <b>B</b>		
(69-80) <b>C</b>		
(55-68) <b>D</b>		
(39-54) <b>E</b>		
(21-38) <b>F</b>		
(1-20) <b>G</b>		
Not energy efficient - higher running costs		
<b>England &amp; Wales</b>	EU Directive 2002/91/EC	

Agents Note: Whilst every care has been taken to prepare these particulars, they are for guidance purposes only. All measurements are approximate and are for general guidance purposes only and whilst every care has been taken to ensure their accuracy, they should not be relied upon and potential buyers/tenants are advised to recheck the measurements

London  
PMP International  
1 Northway's Parade Finchley Road  
London  
NW3 5EN

020 7701 2878  
info@pmpi.co.uk  
www.pmpi.co.uk

**PMP** | INTERNATIONAL