



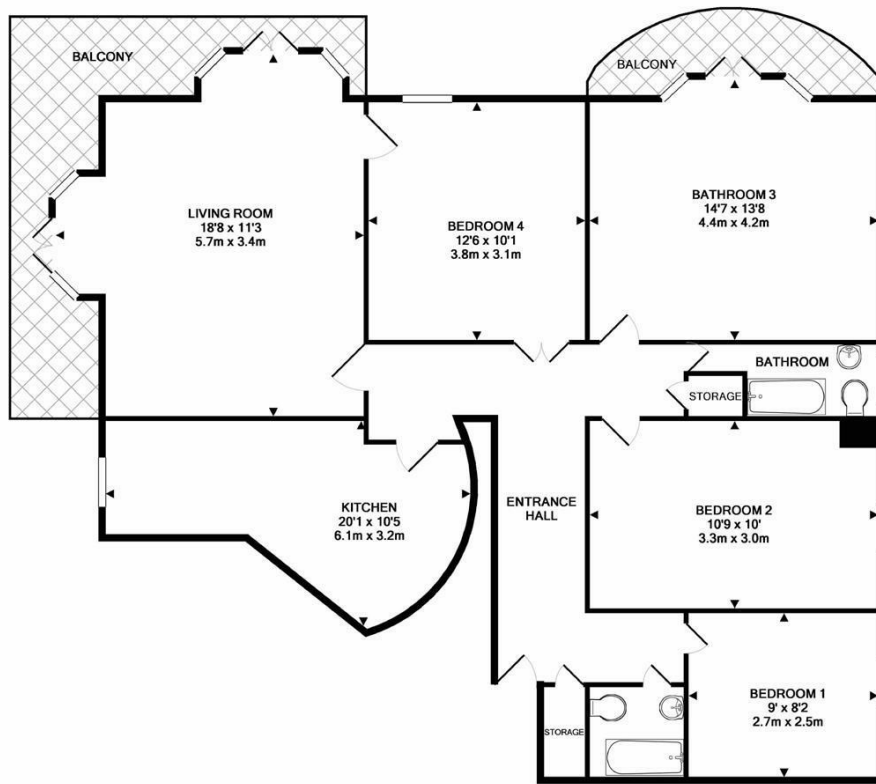
GLOUCESTER PLACE NW1

£1,250 PER WEEK

A well presented bright and airy four-bedroom apartment in a sought after portered block. The apartment comprises a large reception room with modern high specification separate kitchen and four bedrooms. There are two contemporary bathrooms and masses of additional storage throughout as well as private balconies.

Dorset House is less than a minutes walk from Baker Street Tube Station (Hammersmith & City, Bakerloo, Jubilee, Circle and Metropolitan, Zone 1) offering multiple transport links to destinations in The City and Canary Wharf. Baker Street itself offers a variety of supermarkets and cafes and the ever popular Marylebone High Street is also just around the corner with a further selection of boutique shops and restaurants. Regents Park is also situated close by.

PMP | INTERNATIONAL



4TH FLOOR
 TOTAL APPROX. FLOOR AREA 1203 SQ.FT. (111.8 SQ.M.)

Whilst every attempt has been made to ensure the accuracy of the floor plan contained here, measurements of doors, windows, rooms and any other items are approximate and no responsibility is taken for any error, omission, or mis-statement. This plan is for illustrative purposes only and should be used as such by any prospective purchaser. The services, systems and appliances shown have not been tested and no guarantee as to their operability or efficiency can be given.
 Made with Metropix ©2017



Energy Efficiency Rating		Current	Potential
Very energy efficient - lower running costs			
(92 plus) A			
(81-91) B			
(69-80) C		69	80
(55-68) D			
(39-54) E			
(21-38) F			
(1-20) G			
Not energy efficient - higher running costs			
England & Wales		EU Directive 2002/91/EC	

Agents Note: Whilst every care has been taken to prepare these particulars, they are for guidance purposes only. All measurements are approximate and are for general guidance purposes only and whilst every care has been taken to ensure their accuracy, they should not be relied upon and potential buyers/tenants are advised to recheck the measurements

London
 PMP International
 1 Northway's Parade Finchley Road
 London
 NW3 5EN

020 7701 2878
 info@pmpi.co.uk
 www.pmpi.co.uk

PMP | INTERNATIONAL