



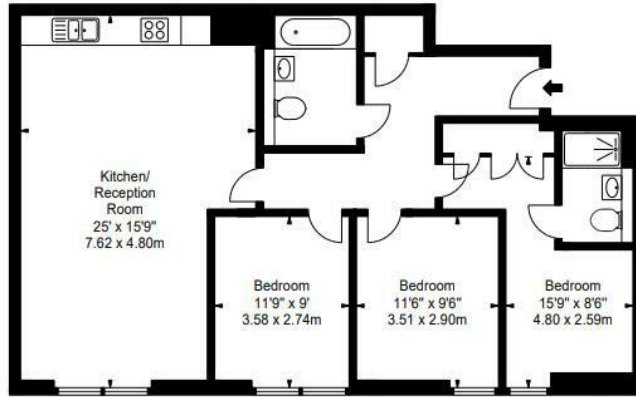
## 509 MERCHANT SQUARE EAST

LONDON, W2 1AN

£1,630 PER WEEK

Stunning 5th floor apartment located in the beautiful purpose built block, Merchant Square in Paddington. Merchant Square is a well presented new build with 24 hour concierge, underground parking and surrounded by a peaceful canal. This wonderful apartment boasts 3 bedrooms, large bright reception room, fully fitted modern kitchen and 2 bathrooms. Available now, viewings are highly recommended. Merchant Square is ideally located within walking distance to transport links and local amenities.

**PMP** | INTERNATIONAL



APARTMENT 509  
MERCHANT SQUARE EAST  
W2

Approx Gross Internal Area\*  
942 Sq Ft - 87.51 Sq M

Surveyed and Drawn By  
**BKR**  
Sunnyhill House, 3-7 Sunnyhill Road  
London, SW16 2JG

Energy Efficiency Rating		Current	Potential
Very energy efficient - lower running costs			
(92 plus) A			
(81-91) B			
(69-80) C			
(55-68) D			
(39-54) E			
(21-38) F			
(1-20) G			
Not energy efficient - higher running costs			
<b>England &amp; Wales</b>		EU Directive 2002/91/EC	

Agents Note: Whilst every care has been taken to prepare these particulars, they are for guidance purposes only. All measurements are approximate and are for general guidance purposes only and whilst every care has been taken to ensure their accuracy, they should not be relied upon and potential buyers/tenants are advised to recheck the measurements

London  
PMP International  
1 Northway's Parade Finchley Road  
London  
NW3 5EN

020 7701 2878  
info@pmpi.co.uk  
www.pmpi.co.uk

**PMP** | INTERNATIONAL