



Gloucester Place, London, NW1

£1,300



Gloucester Place, London, NW1

£1,300

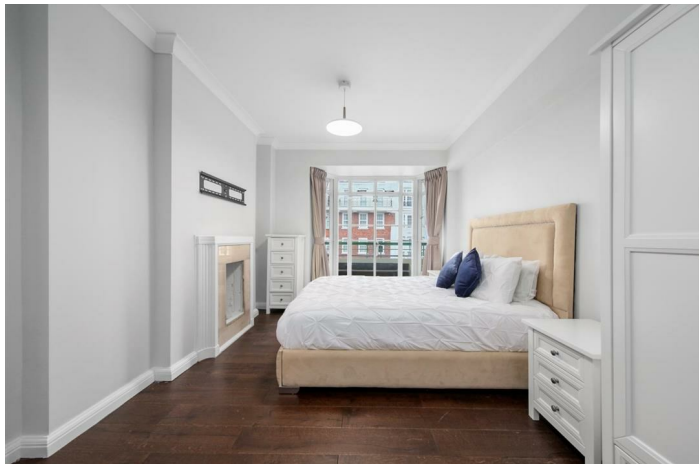
***INCLUSIVE OF HOT WATER AND HEATING* AVAILABLE NOW**

Beautifully presented 3 bed, 2 bath apartment in Dorset House, a stunning 1930's Art Deco building located on Gloucester Place benefiting from concierge, newly refurbished communal areas and a passenger lift.

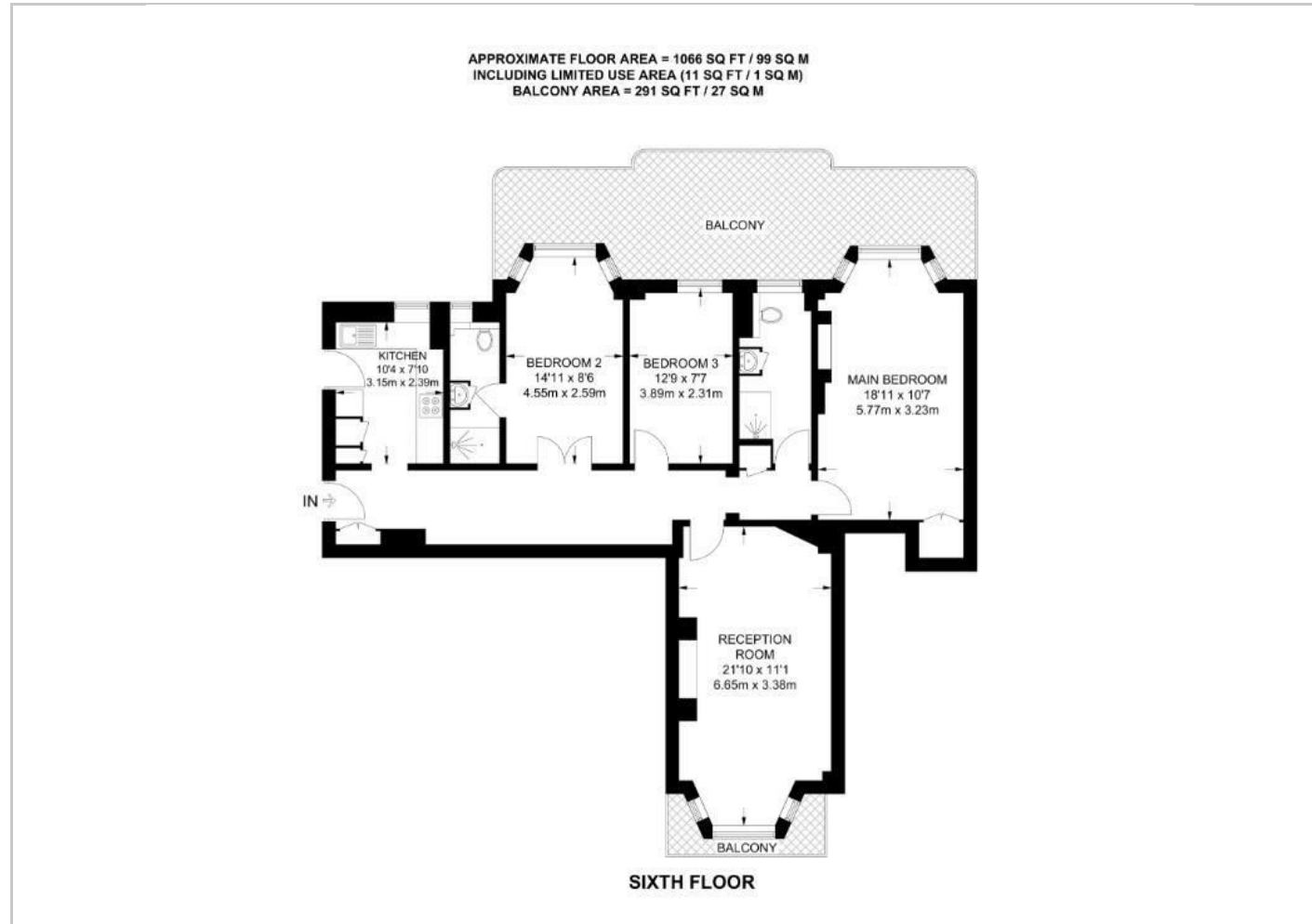
The flat boasts a large hallway, fully fitted modern kitchen, large reception room with fireplace leading out to a balcony, 3 double bedrooms and 2 bathrooms (one en-suite).

Dorset House is ideally located within short walking distance to Baker Street Tube Station (Jubilee, Metropolitan, Circle and Hammersmith Lines). Baker Street offers an array of restaurants, shops, bars and cafes.

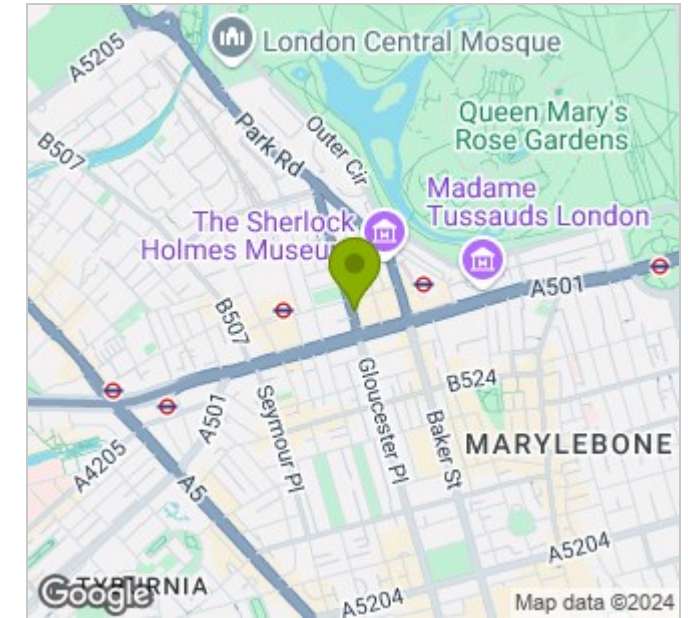
INCLUSIVE OF HOT WATER AND HEATING



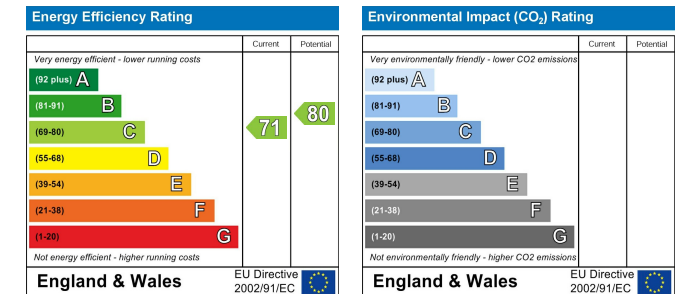
Floor Plans



Area Map



Energy Performance Graph



73 Baker Street
 London W1U 6RD
 T 020 7034 1414
 E info@primemetro.co.uk

1 Northway's Parade
 Finchley Road, London NW3 5EN
 T 020 7701 2878
 E infoswiss@primemetro.co.uk



www.primemetro.co.uk