



1 ST JOHNS WOOD PARK LONDON, NW8 6QS

£10,000 PER MONTH

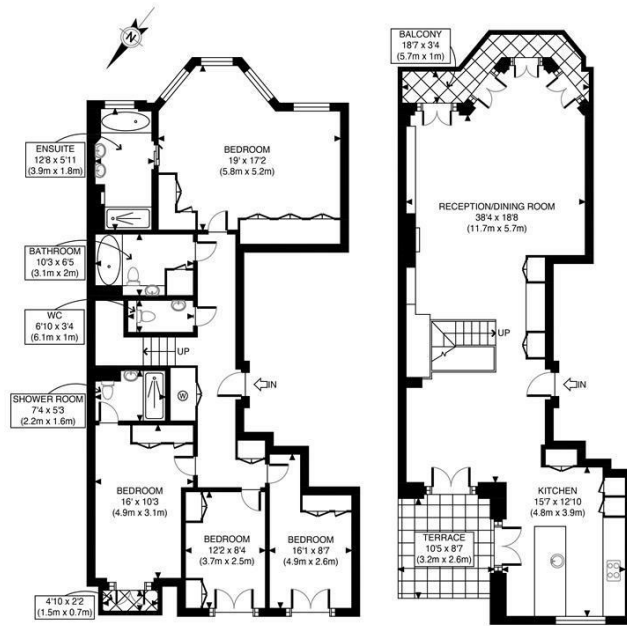
A stylish brand new penthouse duplex apartment in the heart of St Johns Wood in a landmark building designed by the award winning architects Maccreanor Lavington.

Situated on the 8th and 9th floor of this building the property comprises a large living space on the 9th floor with a sectioned off living and dining, separate guest WC and views towards Primrose Hill, with plentiful light and balcony space, the penthouse makes for an excellent summer "pad"

The 8th floor comprises a spectacular master bedroom with en-suite, a further bedroom with en-suite and well-proportioned 3rd and 4th bedrooms. A further family bathroom and WC.

Luxury fittings and furnishings throughout, lend this property to a luxury lifestyle.

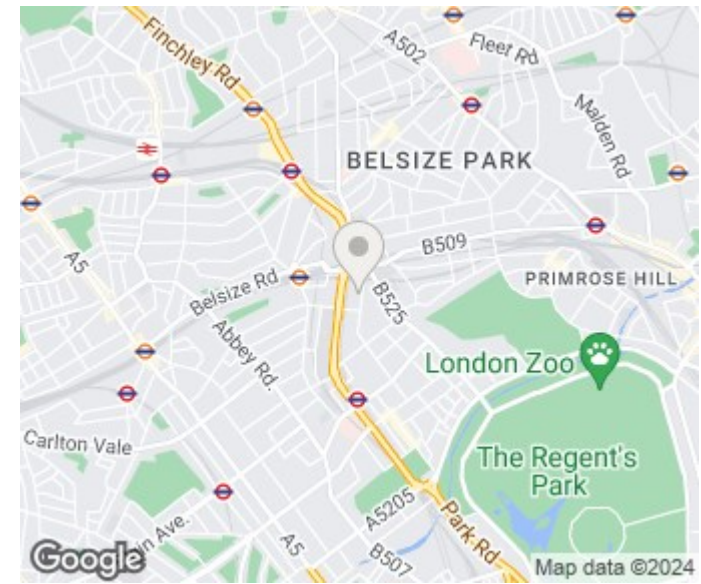
PMP | INTERNATIONAL



APPROX. GROSS INTERNAL FLOOR AREA 1971 SQ FT / 183 SCM

St Johns Wood Park
date: 27/06/24
photoplan

Disclaimer: Floor plan measurements are approximate and are for illustrative purposes only. While we do not doubt the floor plan accuracy and completeness, you or your advisors should conduct a careful, independent investigation of the property in respect of monetary valuation



Energy Efficiency Rating		Current	Potential
Very energy efficient - lower running costs			
(92 plus) A			
(81-91) B			
(69-80) C			
(55-68) D			
(39-54) E			
(21-38) F			
(1-20) G			
Not energy efficient - higher running costs			
England & Wales		EU Directive 2002/91/EC	

Agents Note: Whilst every care has been taken to prepare these particulars, they are for guidance purposes only. All measurements are approximate and are for general guidance purposes only and whilst every care has been taken to ensure their accuracy, they should not be relied upon and potential buyers/tenants are advised to recheck the measurements

London
PMP International
1 Northway's Parade Finchley Road
London
NW3 5EN

020 7701 2878
info@pmpi.co.uk
www.pmpi.co.uk

PMP | INTERNATIONAL