



4 MOUNT STREET

LONDON, W1K 3ND

£1,100 PER WEEK

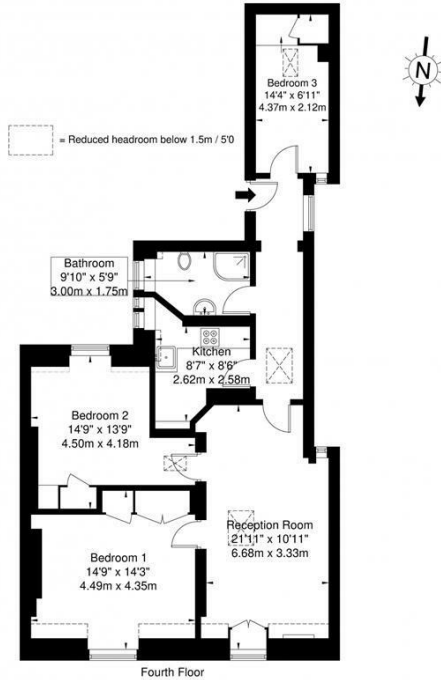
An amazing 3 bed apartment situated in a period building on Mount Street, a prestigious Mayfair address. The apartment benefits from 3 double bedrooms, spacious and bright reception, separate fully fitted modern kitchen and a modern family bathroom. The property has hard wood flooring, a stylish neutral décor and early viewing is recommended.

AVAILABLE 1st of August.

PMP | INTERNATIONAL

Mount Street, W1K

Approx. Gross Internal Area = 84.8 sq m / 913 sq ft



Ref

Copyright **BLEU PLAN**

The Floor plan is not to scale and measurements and areas shown are approximate and therefore should be used for illustrative purposes only. The plan has been prepared in accordance with the RICS code of Measuring Practice and whilst we have confidence in the information produced it must not be relied on. If there is any aspect of particular importance, you should carry out or commission your own inspection of the property.
Copyright © BLEUPLAN



Energy Efficiency Rating		
	Current	Potential
Very energy efficient - lower running costs		
(92 plus) A		
(81-91) B		
(69-80) C		
(55-68) D		
(39-54) E		
(21-38) F		
(1-20) G		
Not energy efficient - higher running costs		
England & Wales	EU Directive 2002/91/EC	

Agents Note: Whilst every care has been taken to prepare these particulars, they are for guidance purposes only. All measurements are approximate and are for general guidance purposes only and whilst every care has been taken to ensure their accuracy, they should not be relied upon and potential buyers/tenants are advised to recheck the measurements

London
PMP International
1 Northway's Parade Finchley Road
London
NW3 5EN

020 7701 2878
info@pmpi.co.uk
www.pmpi.co.uk

PMP | INTERNATIONAL