

## 43B PARK ROAD

MARYLEBONE, NW1 4SN

£600 PER WEEK

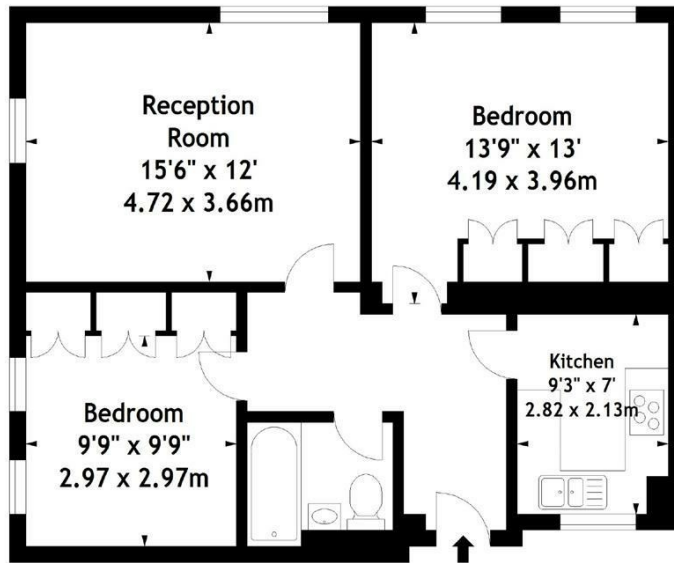
A spacious two bed flat located in a beautiful red brick Mansion Block opposite Regents Park, within an easy walk to Marylebone station, Baker Street and Marylebone Village.

The flat is located on the first floor and has a spacious living area with dining section, modern kitchen, spacious bedroom with built in storage and family bathroom.

The mansion block has live in portorage and early viewing is recommended.

**PMP** | INTERNATIONAL

Hanover Gate Mansions,  
Park Road, NW1  
Approx. Gross Internal Area  
703 Sq Ft - 65.31 Sq M



First Floor

Measured in accordance with RICS guidelines. Every attempt is made to ensure accuracy, however all measurements are approximate. This floor plan is for illustrative purposes only and is not to scale.

© Datography Ltd 2016  
Photographs \* Floorplans \* Virtual Tours  
Tel: 0845 643 4401 www.datography.com



Energy Efficiency Rating		Current	Potential
Very energy efficient - lower running costs			
(92 plus) A			
(81-91) B		79	81
(69-80) C			
(55-68) D			
(39-54) E			
(21-38) F			
(1-20) G			
Not energy efficient - higher running costs			
England & Wales		EU Directive 2002/91/EC	

Agents Note: Whilst every care has been taken to prepare these particulars, they are for guidance purposes only. All measurements are approximate and are for general guidance purposes only and whilst every care has been taken to ensure their accuracy, they should not be relied upon and potential buyers/tenants are advised to recheck the measurements

London  
PMP International  
1 Northway's Parade Finchley Road  
London  
NW3 5EN

020 7701 2878  
info@pmpi.co.uk  
www.pmpi.co.uk

**PMP** | INTERNATIONAL