

HOUSE 7 COURT CLOSE ST. JOHNS WOOD PARK LONDON, NW8 6NJ

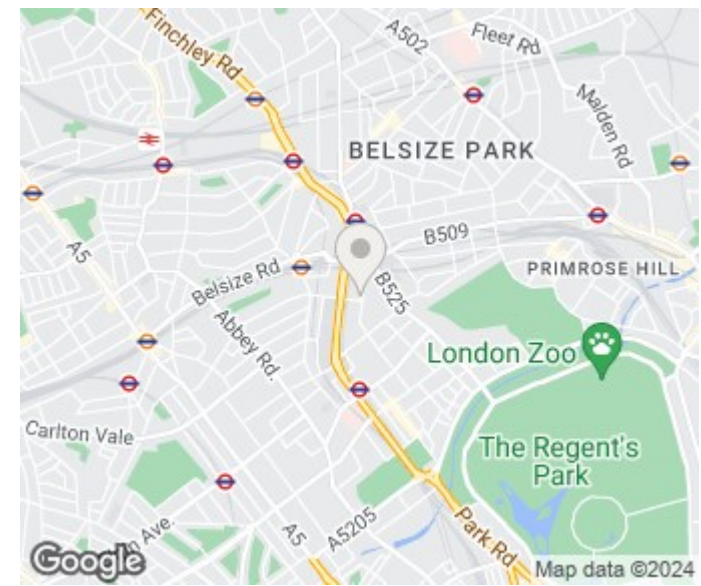
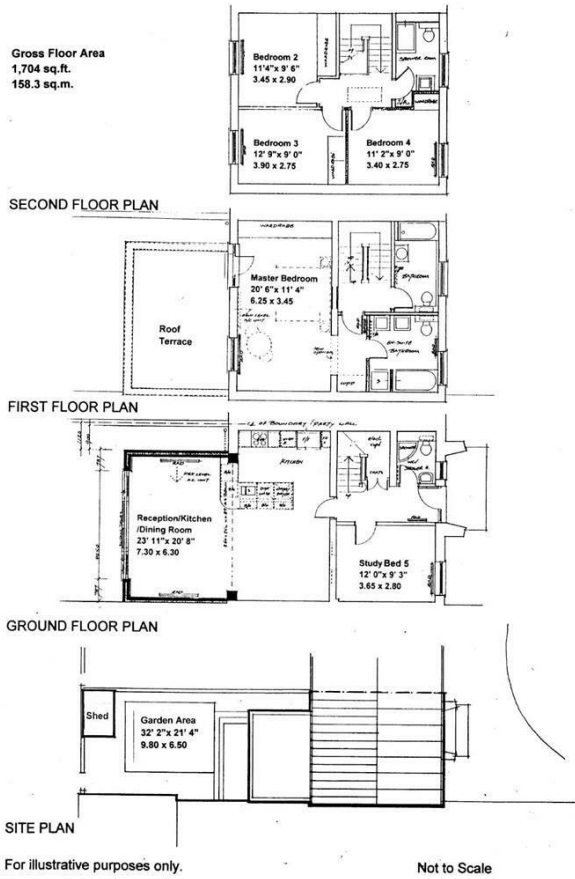
£2,420 PER WEEK

Luxury 5 bedroom, 4 bathroom house offering an open plan reception area that leads to the garden. Stunning features throughout the house, including a fully integrated kitchen, kitchen island and modern décor.

Viewings are highly recommended!

PMP | INTERNATIONAL

7 COURT CLOSE, BOYDELL COURT, ST. JOHN'S WOOD PARK, LONDON NW8



Energy Efficiency Rating		Current	Potential
Very energy efficient - lower running costs			
(92 plus) A			
(81-91) B			
(69-80) C			
(55-68) D			
(39-54) E			
(21-38) F			
(1-20) G			
Not energy efficient - higher running costs			
England & Wales		EU Directive 2002/91/EC	

Agents Note: Whilst every care has been taken to prepare these particulars, they are for guidance purposes only. All measurements are approximate and are for general guidance purposes only and whilst every care has been taken to ensure their accuracy, they should not be relied upon and potential buyers/tenants are advised to recheck the measurements

London
PMP International
1 Northway's Parade Finchley Road
London
NW3 5EN

020 7701 2878
info@pmpi.co.uk
www.pmpi.co.uk

PMP | INTERNATIONAL