



## 7 COURT CLOSE ST. JOHNS WOOD PARK LONDON, NW8 6NN

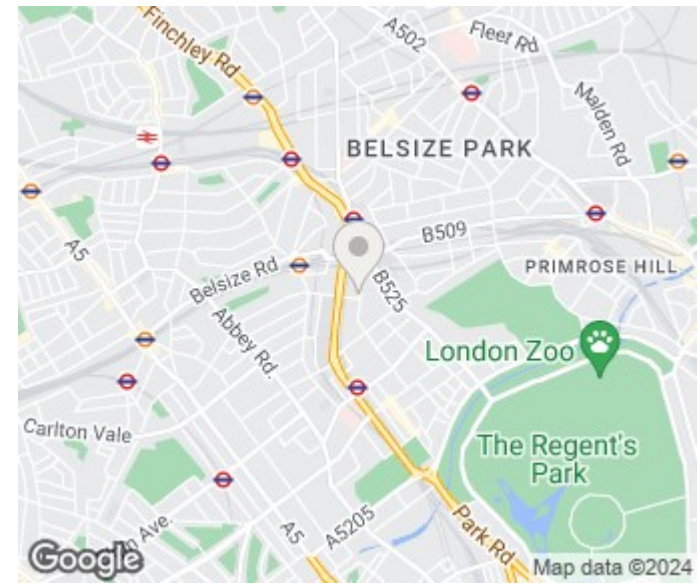
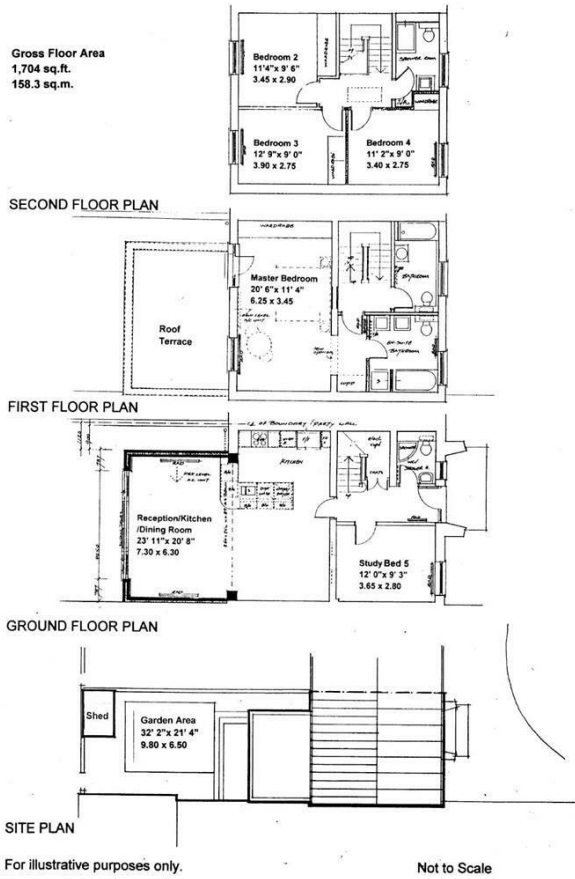
£2,430 PER WEEK

A beautifully designed five double bedroom, four bathroom apartment furnished to a high standard, located in a secure development within easy reach of St Johns Wood and Swiss Cottage.

The Development further boasts an on-site porter, double glazed windows, lift access and secure off street parking.

**PMP** | INTERNATIONAL

7 COURT CLOSE, BOYDELL COURT, ST. JOHN'S WOOD PARK, LONDON NW8



Energy Efficiency Rating		Current	Potential
Very energy efficient - lower running costs			
(92 plus) A			
(81-91) B			
(69-80) C			73
(55-68) D		55	
(39-54) E			
(21-38) F			
(1-20) G			
Not energy efficient - higher running costs			
England & Wales		EU Directive 2002/91/EC	

Agents Note: Whilst every care has been taken to prepare these particulars, they are for guidance purposes only. All measurements are approximate and are for general guidance purposes only and whilst every care has been taken to ensure their accuracy, they should not be relied upon and potential buyers/tenants are advised to recheck the measurements

London  
PMP International  
1 Northway's Parade Finchley Road  
London  
NW3 5EN

020 7701 2878  
info@pmpi.co.uk  
www.pmpi.co.uk

**PMP** | INTERNATIONAL