



COLLEGE PLACE LONDON, NW1 0DR

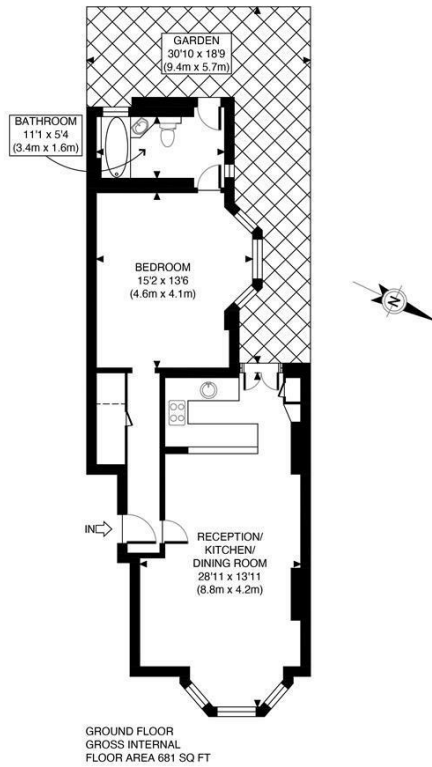
£610,000
LEASEHOLD

PMP International is delighted to present this charming exceptionally large 681 square foot apartment located in a converted Victorian house, on a quiet residential street which is moments from the hustle and bustle of Camden Town.

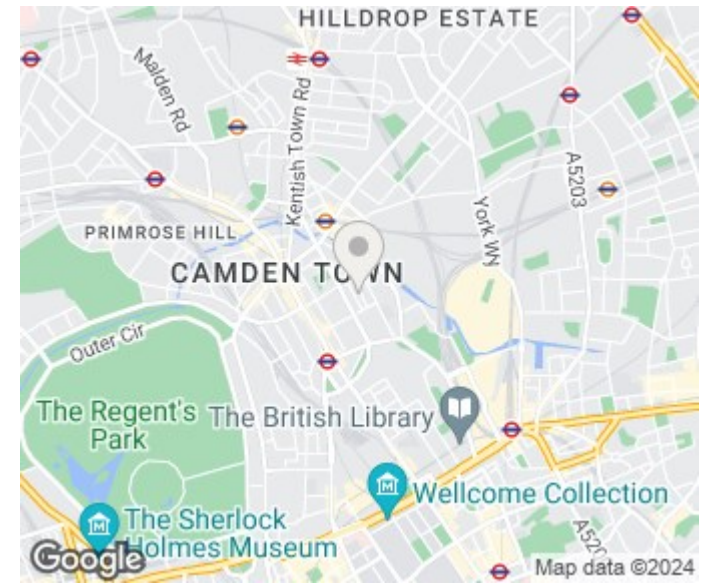
The property has an open plan living area, contemporary decor and high ceilings with period features. The property further benefits from a generous patio area (measuring approximately 350 square feet) which is ideal for Summer evenings. The property is ready to move into or rented immediately. Given the central Camden location, there is an array of restaurants, night life, and things to do.

Given the size of the property there is scope for reconfiguration as a two bedroom, subject to the usual consents.

PMP | INTERNATIONAL



APPROX. GROSS INTERNAL FLOOR AREA 681 SQ FT / 63 SQM	College Place
Disclaimer: Floor plan measurements are approximate and are for illustrative purposes only. While we do not doubt the floor plan accuracy and completeness, you or your advisors should conduct a careful, independent investigation of the property in respect of monetary valuation	date 20/05/24
	photoplan



Energy Efficiency Rating		Current	Potential
Very energy efficient - lower running costs			
(92 plus) A			
(81-91) B			
(69-80) C			
(55-68) D		61	76
(39-54) E			
(21-38) F			
(1-20) G			
Not energy efficient - higher running costs			
England & Wales		EU Directive	2002/91/EC

Agents Note: Whilst every care has been taken to prepare these particulars, they are for guidance purposes only. All measurements are approximate and are for general guidance purposes only and whilst every care has been taken to ensure their accuracy, they should not be relied upon and potential buyers/tenants are advised to recheck the measurements

London
PMP International
1 Northway's Parade Finchley Road
London
NW3 5EN

020 7701 2878
info@pmpi.co.uk
www.pmpi.co.uk

PMP | INTERNATIONAL