



Boydell Court, St Johns Wood, NW8

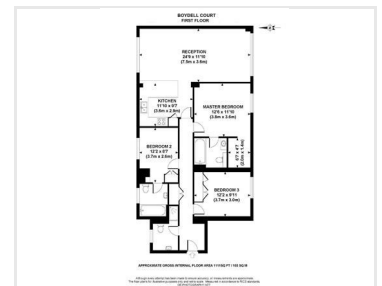
£1,300 Per Week



A beautifully designed three double bedroom, three bathroom apartment furnished to a high standard on the first floor, located in a secure development within easy reach of St Johns Wood and Swiss Cottage.

Comprising of a spacious open plan reception, dining room and german designed kitchen, three double bedrooms (two en-suites) and family bathroom. Further benefits include air conditioning throughout, multi-jet showers, alarm and video entry phone.

The Development further boasts an on-site porter, double glazed windows, lift access and secure off street parking.



- 3 Bedrooms
- High Standard Decor
- Lift
- Swiss Cottage Tube Station
- 3 Bathrooms
- 24 Hour Porterage
- Great Location
- Regents Park Nearby

73 Baker Street
London W1U 6RD
T 020 7034 1414
E info@primemetro.co.uk

1 Northway's Parade
Finchley Road, London NW3 5EN
T 020 7701 2878
E infoswiss@primemetro.co.uk



www.primemetro.co.uk