

Paddington Basin, Paddington, W2

**£1,180 Per Week**



## Paddington Basin, Paddington, W2

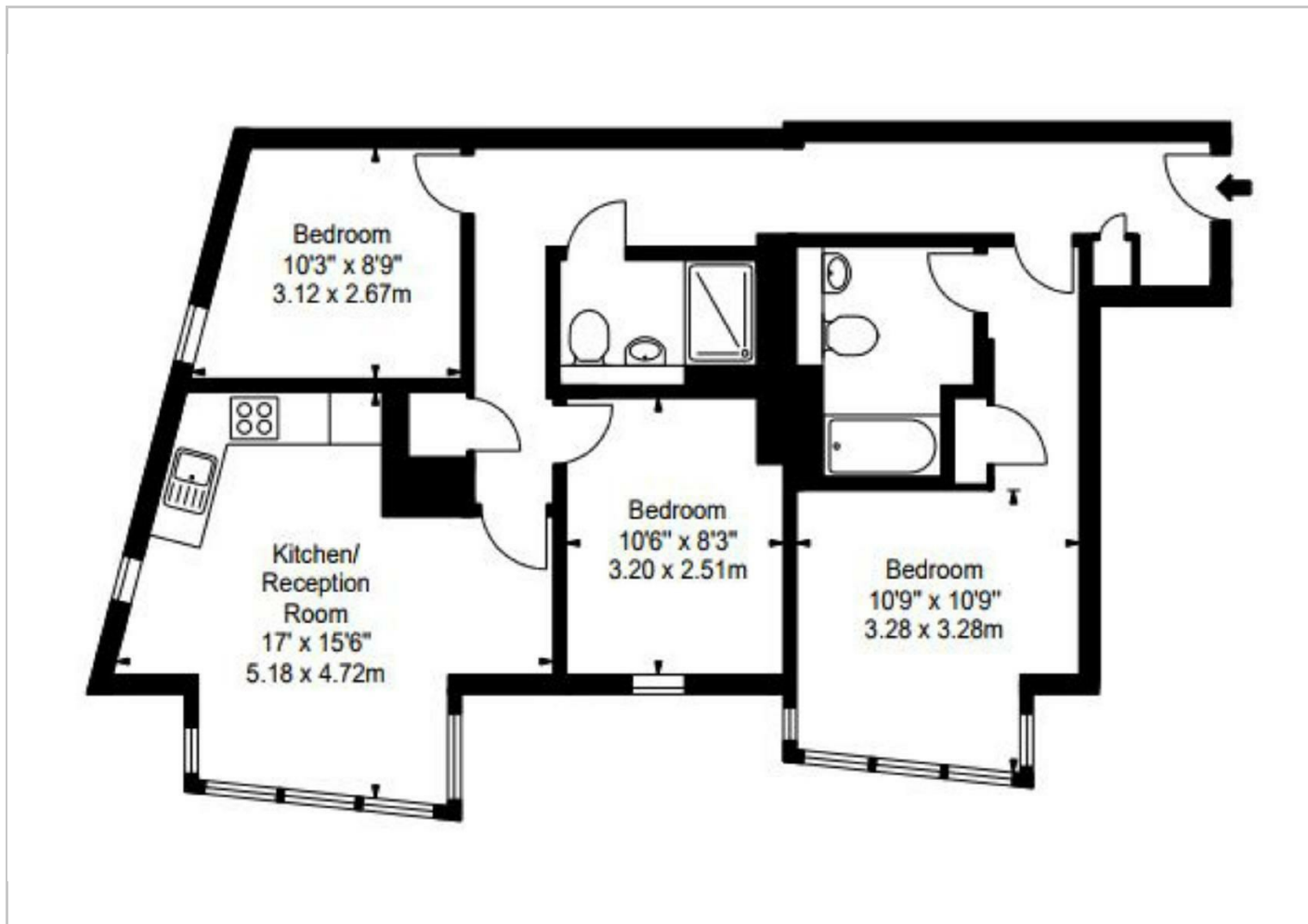
**£1,180 Per Week**

A spacious 3 bedroom apartment is set on the fourth floor within a modern block in the sought after Merchant Square, Paddington Basin. The apartment comprises a beautiful reception room with superb views, a modern fitted open plan kitchen, 3 bedrooms, 2 bathrooms and ample storage space.

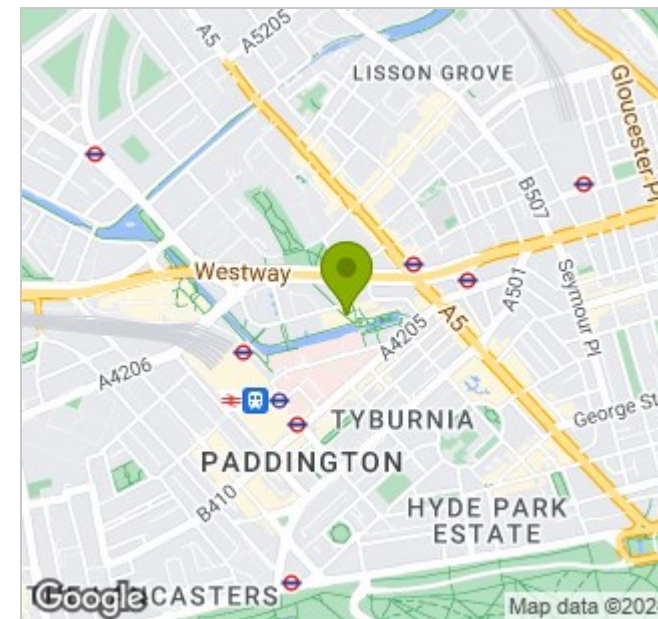
The apartment offers easy access to great transport links such as Paddington Train Station (Bakerloo, Hammersmith & City, Circle, District lines and Heathrow) Edgware Road (Circle, District and Bakerloo lines).



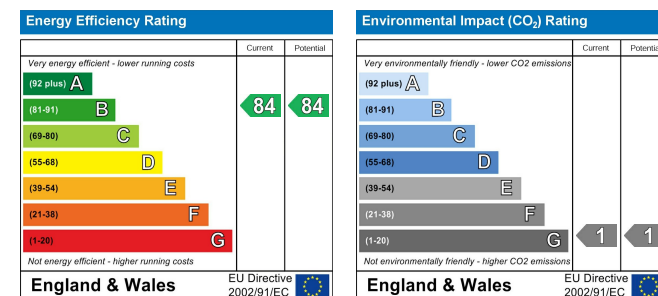
## Floor Plans



## Area Map



## Energy Performance Graph



73 Baker Street  
London W1U 6RD  
T 020 7034 1414  
E info@primemetro.co.uk

1 Northway's Parade  
Finchley Road, London NW3 5EN  
T 020 7701 2878  
E infoswiss@primemetro.co.uk



www.primemetro.co.uk