



FLAT 12, 81 GEORGE STREET

LONDON, W1U 8AQ

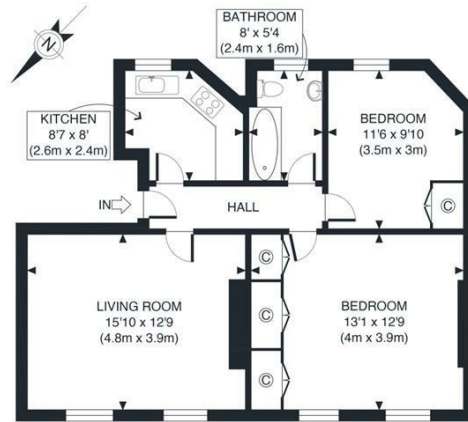
£1,395,000
LEASEHOLD

PMP International is delighted to present this stunning 2 bedroom apartment comprising of 2 double bedrooms, a main bathroom inclusive of a bathtub, fully fitted kitchen and a reasonably sized living area flooding with natural daylight.

On George Street, you will discover the many amenities the surrounding area has to offer from the restaurants, bars and cafes on Baker Street to the world famous Oxford Street for shopping. For transport links you are in prime location with your local tube station being Baker Street for many transport links in and around London. You can also catch many buses for whichever direction you might be going in.

Viewings are highly recommended.

PMP | INTERNATIONAL



SECOND FLOOR
GROSS INTERNAL
FLOOR AREA 673 SQ FT

APPROX. GROSS INTERNAL FLOOR AREA 673 SQ FT / 63 SQM	Haselbury House
Disclaimer: Floor plan measurements are approximate and are for illustrative purposes only. While we do not doubt the floor plan accuracy and completeness, you or your advisors should conduct a careful, independent investigation of the property in respect of monetary valuation	date 29/09/23
	photoplan



Energy Efficiency Rating		
	Current	Potential
Very energy efficient - lower running costs		
(92 plus) A		
(81-91) B		
(69-80) C	76	79
(55-68) D		
(39-54) E		
(21-38) F		
(1-20) G		
Not energy efficient - higher running costs		
England & Wales	EU Directive 2002/91/EC	

Agents Note: Whilst every care has been taken to prepare these particulars, they are for guidance purposes only. All measurements are approximate and are for general guidance purposes only and whilst every care has been taken to ensure their accuracy, they should not be relied upon and potential buyers/tenants are advised to recheck the measurements

London
Prime Metro Properties
Atlantic House 351 Oxford Street
London
W1C 2JF

0207 034 1414
info@primemetro.co.uk
https://www.primemetro.co.uk

PMP | INTERNATIONAL