



## FLAT 12, FLORENCE COURT MAIDA VALE LONDON, W9 1TB

£5,000 PER WEEK

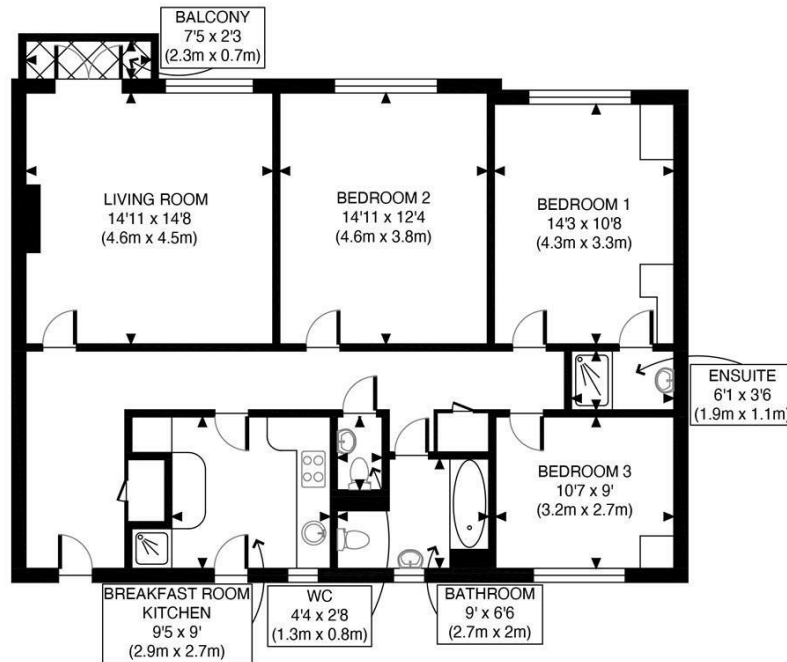
Welcome to this charming property located in the sought-after area of Maida Vale, London. This delightful home boasts a spacious 1,076 sq ft of living space, perfect for those looking for room to breathe in the heart of the city.

Upon entering, you are greeted by a welcoming reception room, ideal for entertaining guests or simply relaxing after a long day. With three cosy bedrooms, there is ample space for a growing family or those in need of a home office.

The property features two bathrooms, offering convenience and privacy for all residents. Built in 1996, this home combines modern amenities with a touch of character, providing a comfortable and stylish living environment.

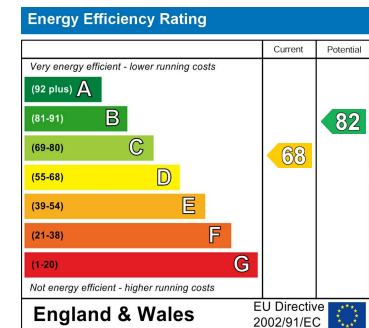
Situated in the vibrant neighbourhood of Maida Vale, residents can enjoy the convenience of local amenities, trendy cafes, and beautiful parks just a stone's throw away. The presence of a concierge adds an extra layer of security and assistance, making everyday living a breeze.

**PMP** | INTERNATIONAL



SECOND FLOOR  
GROSS INTERNAL  
FLOOR AREA 1080 SQ FT

APPROX. GROSS INTERNAL FLOOR AREA 558 SQ FT / 52 SQM	Florence Court
Disclaimer: Floor plan measurements are approximate and are for illustrative purposes only. While we do not doubt the floor plan accuracy and completeness, you or your advisors should conduct a careful, independent investigation of the property in respect of monetary valuation	date 29/04/24
	photoplan



Agents Note: Whilst every care has been taken to prepare these particulars, they are for guidance purposes only. All measurements are approximate and are for general guidance purposes only and whilst every care has been taken to ensure their accuracy, they should not be relied upon and potential buyers/tenants are advised to recheck the measurements

London  
Prime Metro Properties  
Atlantic House 351 Oxford Street  
London  
W1C 2JF

0207 034 1414  
info@primemetro.co.uk  
https://www.primemetro.co.uk

**PMP** | INTERNATIONAL