



697 Garden House, London, W2

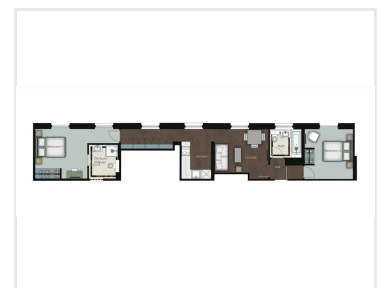
£1,270 Per Week



Stunning Grade II listed building situated on the 4th floor in now available to rent. Garden House offers a communal garden, lift service, 24 hour security and a concierge.

The apartment itself offers features such as a two double bedrooms, a luxurious reception, smart home technology, fully fitted kitchen and a polished marble bathroom with a further en-suite.

Garden House is located in a quiet residential part of W2 and close to the amenities of Westbourne Grove, Notting Hill and the beautiful Hyde Park including Whitley shopping mall. It is also perfectly located for easy access to transport links with Bayswater and Queensway tube station just 5 minutes walk away.



73 Baker Street
London W1U 6RD
T 020 7034 1414
E info@primemetro.co.uk

1 Northway's Parade
Finchley Road, London NW3 5EN
T 020 7701 2878
E infoswiss@primemetro.co.uk



www.primemetro.co.uk