



132 GLOUCESTER PLACE

NW1 5AQ

£5,500 PER WEEK

Beautifully presented 3 bed, 2 bath apartment in Dorset House, a stunning 1930's Art Deco building located on Gloucester Place benefiting from concierge, newly refurbished communal areas and a passenger lift.

The flat boasts a large hallway, fully fitted modern kitchen, large reception room, 3 double bedrooms, 2 bathrooms (one en-suite) and a balcony. Dorset House is ideally located within short walking distance to Baker Street Tube Station (Jubilee, Metropolitan, Circle and Hammersmith Lines).

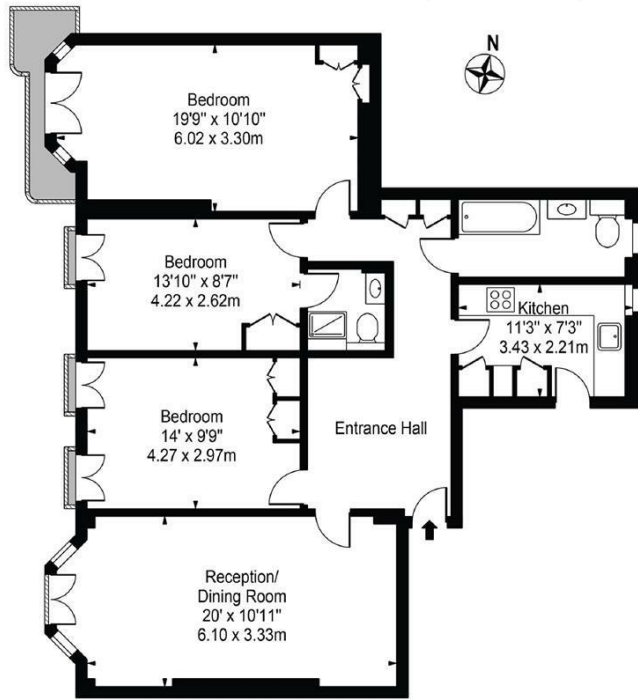
Baker Street offers an array of restaurants, shops, bars and cafes.

Available now and viewings are highly recommended.

PMP | INTERNATIONAL

Dorset House

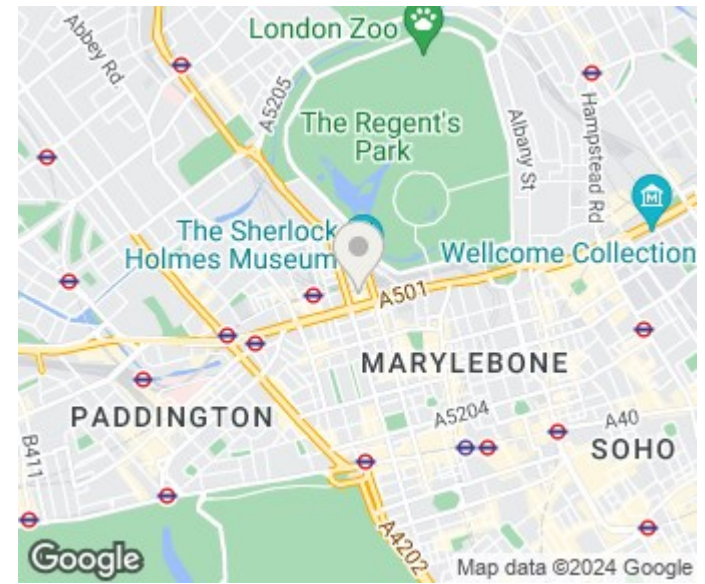
Approx. Gross Internal Area 1050 Sq Ft - 97.55 Sq M



Sixth Floor

For Illustration Purposes Only - Not To Scale

This floor plan should be used as a general outline for guidance only and does not constitute in whole or in part an offer or contract. Any intending purchaser or lessee should satisfy themselves by inspection, searches, enquiries and full survey as to the correctness of each statement. Any areas, measurements or distances quoted are approximate and should not be used to value a property or be the basis of any sale or let.



Energy Efficiency Rating		Current	Potential
Very energy efficient - lower running costs			
(92 plus) A			
(81-91) B			83
(69-80) C		71	
(55-68) D			
(39-54) E			
(21-38) F			
(1-20) G			
Not energy efficient - higher running costs			
England & Wales		EU Directive 2002/91/EC	

Agents Note: Whilst every care has been taken to prepare these particulars, they are for guidance purposes only. All measurements are approximate and are for general guidance purposes only and whilst every care has been taken to ensure their accuracy, they should not be relied upon and potential buyers/tenants are advised to recheck the measurements

London
PMP International
1 Northway's Parade Finchley Road
London
NW3 5EN

020 7701 2878
info@pmpi.co.uk
www.pmpi.co.uk

PMP | INTERNATIONAL