



105 GLOUCESTER PLACE

LONDON, W1U 6AW

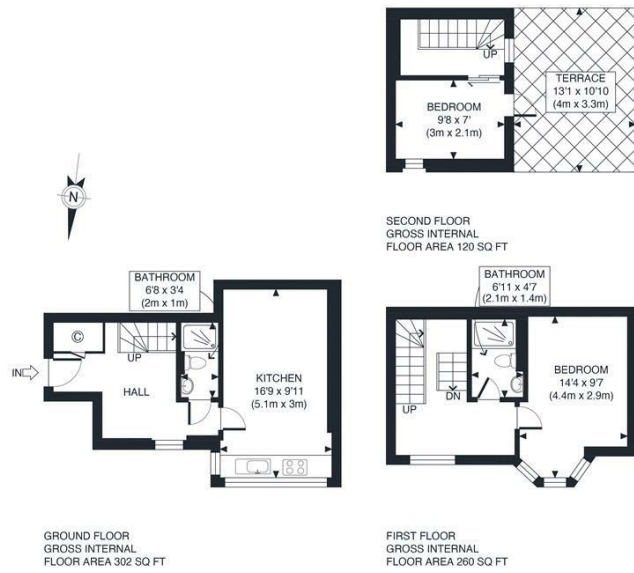
£3,250 PER WEEK

Located near to LBS, Westminster College and Regents University, ideal for students!

A beautiful 2 beds property on the top floor of a Georgian building is split across three floors and boasts a stunning private roof terrace. The large entrance hall leads to an open plan kitchen/reception room and family bathroom on the first floor, on the second floor is the master bedroom with built-in storage and a further bathroom with walk-in shower, On the top floor is an additional room which can be used as a study/office leading out to the private roof terrace. Further benefiting from wood floors throughout, high ceilings and beautiful bay window in the master bedroom.

Gloucester Place is centrally located in the heart of Marylebone, being just a few minutes' walk from Marylebone High Street and Oxford Street. Baker Street Underground (Metropolitan, Bakerloo, Jubilee, Circle and Hammersmith & City Lines, Zone 1) and Bond Street tube station (Central & Jubilee Lines, Zone 1) are also within easy walking distance of the property.

PMP | INTERNATIONAL



APPROX. GROSS INTERNAL FLOOR AREA 682 SQ FT / 63 SQM	Gloucester Place
<small>Disclaimer: Floor plan measurements are approximate and are for illustrative purposes only. While we do not doubt the floor plan accuracy and completeness, you or your advisors should conduct a careful, independent investigation of the property in respect of monetary valuation.</small>	<small>date 03/04/23</small>
	photoplan



Energy Efficiency Rating		
	Current	Potential
Very energy efficient - lower running costs		
(92 plus) A		
(81-91) B		
(69-80) C		
(55-68) D		
(39-54) E		
(21-38) F		
(1-20) G		
Not energy efficient - higher running costs		
England & Wales	EU Directive 2002/91/EC	

Agents Note: Whilst every care has been taken to prepare these particulars, they are for guidance purposes only. All measurements are approximate and are for general guidance purposes only and whilst every care has been taken to ensure their accuracy, they should not be relied upon and potential buyers/tenants are advised to recheck the measurements

London
PMP International
1 Northway's Parade Finchley Road
London
NW3 5EN

020 7701 2878
info@pmpi.co.uk
www.pmpi.co.uk

PMP | INTERNATIONAL