



HOPE CLOSE

LONDON, NW4

£615,000
LEASEHOLD

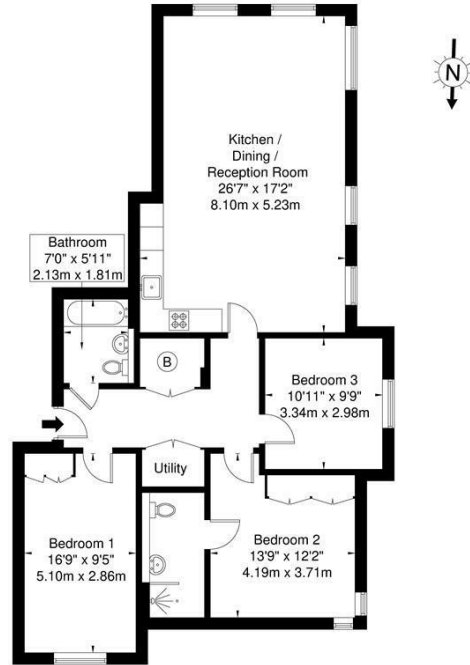
Stunning 3 bedroom, 2 bathroom apartment benefitting from a large, spacious reception room with ample natural daylight that shines throughout the flat. Offering a separate dining area, along with a fully integrated kitchen.

Close to many restaurants, cafes and boutiques.

PMP | INTERNATIONAL

Belham, Hope Close, NW4 1PN

Approx. Gross Internal Area = 104.7 sq m / 1126 sq ft



First Floor
 Ref: _____ Copyright: BLEU PLAN

The Floor plan is not to scale and measurements and areas shown are approximate and therefore should be used for illustrative purposes only. The plan has been prepared in accordance with the RICS code of Measuring Practice and whilst we have confidence in the information produced it must not be relied on. If there is any aspect of particular importance, you should carry out or commission your own inspection of the property.
 Copyright © BLEUPLAN



Energy Efficiency Rating		
	Current	Potential
Very energy efficient - lower running costs		
(92 plus) A		
(81-91) B		
(69-80) C		
(55-68) D		
(39-54) E		
(21-38) F		
(1-20) G		
Not energy efficient - higher running costs		
England & Wales	EU Directive 2002/91/EC	

Agents Note: Whilst every care has been taken to prepare these particulars, they are for guidance purposes only. All measurements are approximate and are for general guidance purposes only and whilst every care has been taken to ensure their accuracy, they should not be relied upon and potential buyers/tenants are advised to recheck the measurements

London
 PMP International
 1 Northway's Parade Finchley Road
 London
 NW3 5EN

020 7701 2878
 info@pmpi.co.uk
 www.pmpi.co.uk

PMP | INTERNATIONAL