

oakheart

£1,325 Per Month

Per Month

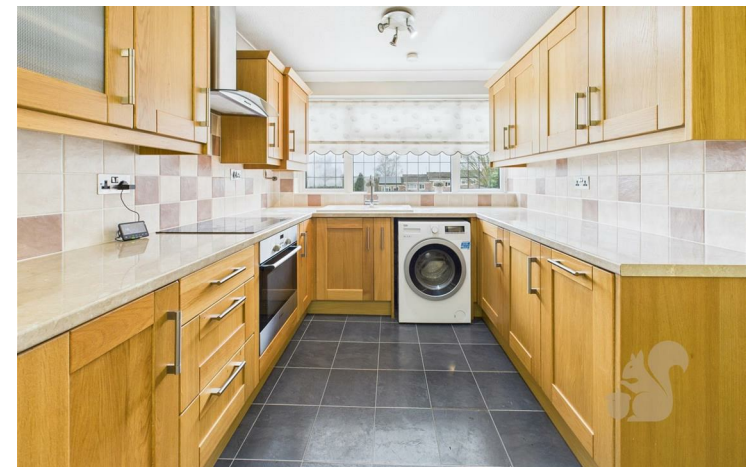
Windmill Road, Halstead

Oakheart are proud to offer this exceptionally well presented three bedroom home in the heart of the sought after town of Halstead.

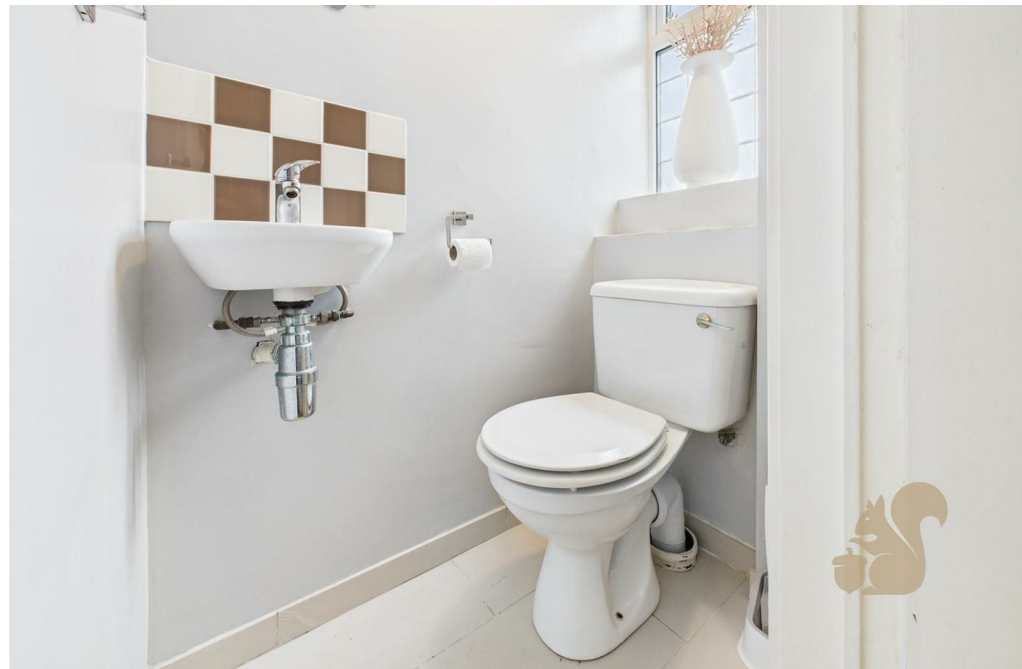
The property offers two spacious double bedrooms and a generous single bedroom, making it ideal for small families or professionals. Presented in excellent condition throughout, the home benefits from bright and spacious

living accommodation.

Outside, there is a large private rear garden, perfect for outdoor dining and entertaining, along with driveway parking for one vehicle. Conveniently located close to local amenities, schools and transport links, this attractive home is ready for immediate occupation.











oakheart

Local Authority:

Tenure:

Council Tax Band:

Energy Efficiency Rating

	Current	Potential
Very energy efficient - lower running costs		
(92 plus) A		
(81-91) B		87
(69-80) C		
(55-68) D	61	
(39-54) E		
(21-38) F		
(1-20) G		
Not energy efficient - higher running costs		
England & Wales	EU Directive 2002/91/EC	

Agents Note: Whilst every care has been taken to prepare these particulars, they are for guidance purposes only. All measurements are approximate and are for general guidance purposes only and whilst every care has been taken to ensure their accuracy, they should not be relied upon.

Oakheart Sudbury - Lettings
01787 322 322
sudburylettings@oakheart.co.uk
18 Market Hill, Sudbury, Suffolk, CO10 2EA

oakheart