

oakheart

£279,995

Offers In The Region Of
Heath Estate, Great Waldingfield



Positioned in a quiet and discreet setting within the popular Heath Estate in Great Waldingfield, this two-bedroom semi-detached bungalow offers comfortable single-level living and is ideal for those seeking a peaceful village location.

Set back from the road, the property enjoys a neatly maintained front garden with a well-kept lawn bordered by mature shrubs, alongside a private driveway providing off-street parking. Entry is gained via an internal entrance hall which provides access to the principal rooms. The spacious living room is located to the rear of the bungalow and benefits from a large window overlooking the garden,

creating a light and pleasant space to relax. The kitchen is fitted with a range of timber-effect wall and base units, stone-effect worktops, a stainless steel sink and drainer unit, and space for appliances. Both bedrooms are generously proportioned and can comfortably accommodate double beds. Completing the internal accommodation is a practical shower room, fitted with a walk-in shower, low-level WC, and wash hand basin.

Outside, the rear garden is mostly laid to lawn and enjoys a good degree of privacy, enclosed by mature hedging and established shrubs. The property also benefits from a single garage, ideal for

storage or secure parking.

Offered with no onward chain, this bungalow presents a fantastic opportunity to personalise and create a charming village home.

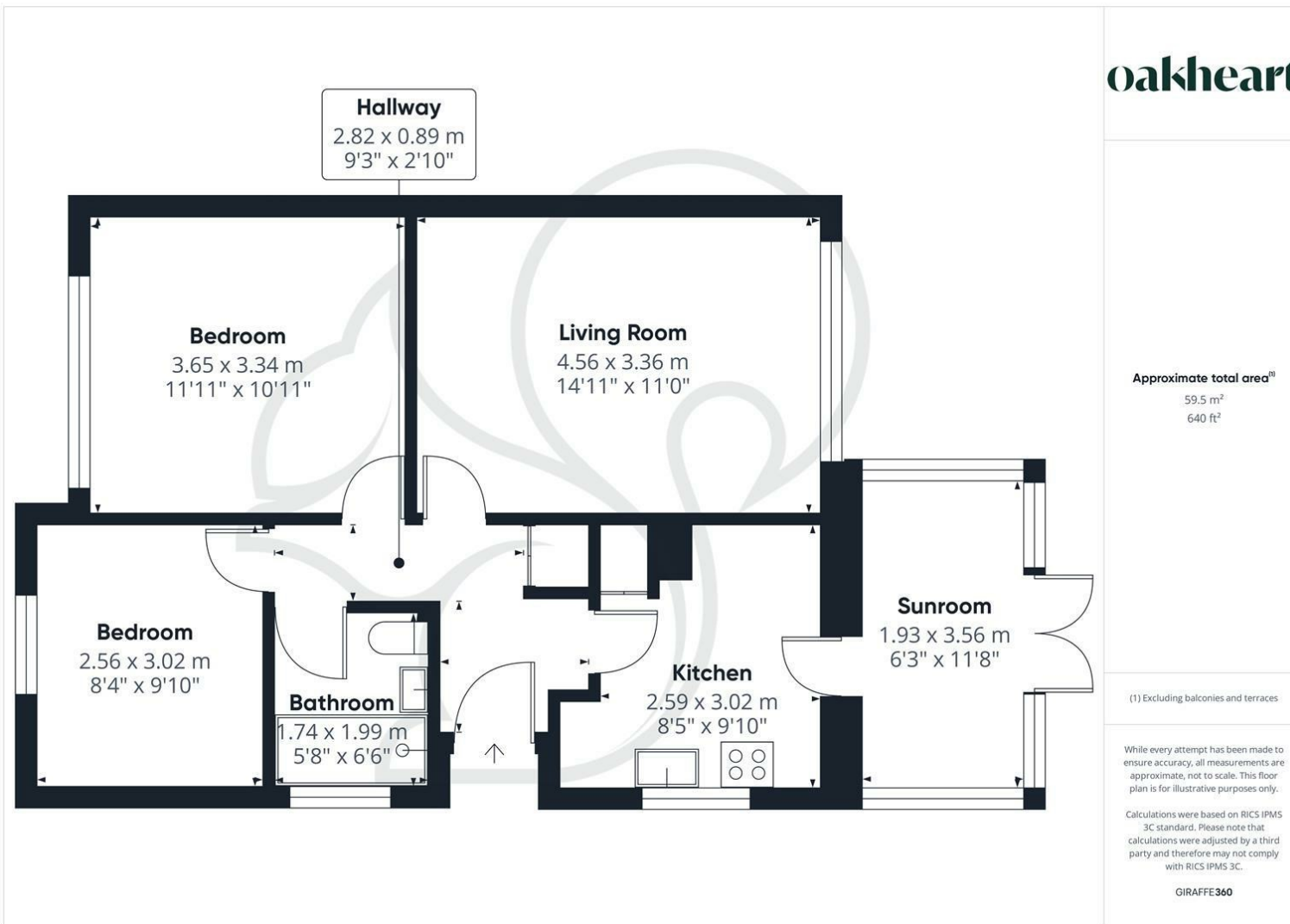
Call Oakheart today to arrange your viewing!












Local Authority:

Tenure:
Freehold

Council Tax Band:
C

Energy Efficiency Rating

	Current	Potential
<i>Very energy efficient - lower running costs</i>		
(92 plus) A		
(81-91) B		
(69-80) C		
(55-68) D		
(39-54) E		
(21-38) F		
(1-20) G		
<i>Not energy efficient - higher running costs</i>		
England & Wales	EU Directive 2002/91/EC 	

Agents Note: Whilst every care has been taken to prepare these particulars, they are for guidance purposes only. All measurements are approximate and are for general guidance purposes only and whilst every care has been taken to ensure their accuracy, they should not be relied upon.