

oakheart

£400,000

Price Guide
Kebbles, Glemsford

Guide Price £400,000 - £425,000

Set in the heart of the sought-after village of Glemsford, this beautifully updated four-bedroom link-detached home offers spacious and versatile living ideal for modern family life. Boasting an extensive rear garden, a garage, ample parking, and stylish finishes throughout, this property is ready to move straight into.

The current owners have tastefully transformed the ground floor, opening up the original layout to create a stunning open-plan kitchen, dining, and living area. A new Wren kitchen forms the heart of the home, complete with contemporary finishes and plenty of storage and workspace. Bi-fold doors span part of the rear of the property, seamlessly connecting the living space with

the landscaped garden, making it perfect for entertaining or enjoying relaxed family time.

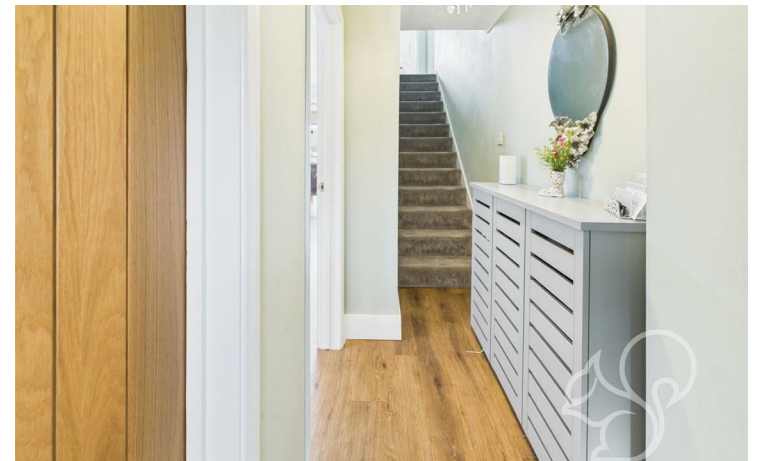
The ground floor also includes a downstairs cloakroom and a welcoming entrance hall.

Upstairs, the home offers three well-proportioned double bedrooms and a fourth single room, perfect as a nursery, dressing room or study. The family bathroom is modern and well-appointed, with a stylish three-piece suite.

This home has been thoughtfully improved with a new boiler, new windows throughout, and a fresh, light décor that feels both elegant and inviting.

Outside, the rear garden is a true highlight—generous in size, beautifully landscaped and featuring multiple seating areas to enjoy the outdoors. There is also rear access to the garage and plenty of space for children to play or for green-fingered buyers to make their mark.

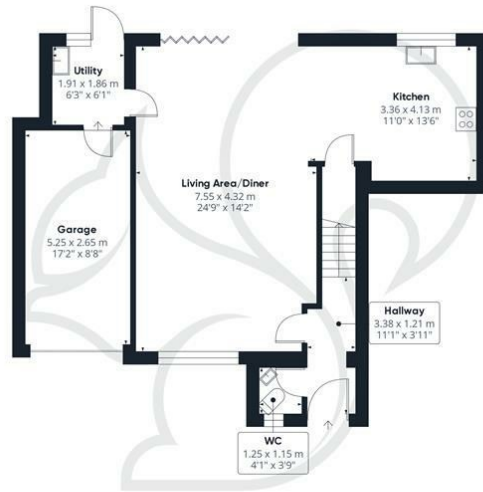
Located within walking distance of local amenities, schools, and countryside walks, and with convenient access to Sudbury and surrounding villages, this home offers the perfect mix of lifestyle and location.











Ground Floor



Floor 1

oakheart

Approximate total area[®]

117.11 m²
1260.57 ft²

(1) Excluding balconies and terraces

While every attempt has been made to ensure accuracy, all measurements are approximate, not to scale. This floor plan is for illustrative purposes only.

Calculations are based on RICS IPMS 3C standard.

GIRAFFE360

Local Authority:
Babergh

Tenure:
Freehold

Council Tax Band:
C

Energy Efficiency Rating

	Current	Potential
<i>Very energy efficient - lower running costs</i>		
(92 plus) A		
(81-91) B		
(69-80) C	72	83
(55-68) D		
(39-54) E		
(21-38) F		
(1-20) G		
<i>Not energy efficient - higher running costs</i>		
England & Wales	EU Directive 2002/91/EC	

Agents Note: Whilst every care has been taken to prepare these particulars, they are for guidance purposes only. All measurements are approximate and are for general guidance purposes only and whilst every care has been taken to ensure their accuracy, they should not be relied upon.

Oakheart Sudbury
01787 322 322
sudbury@oakheart.co.uk
18 Market Hill, Sudbury, Suffolk, CO10 2EA

oakheart