

oakheart

£260,000

Offers In The Region Of  
Windmill Row, Glemsford



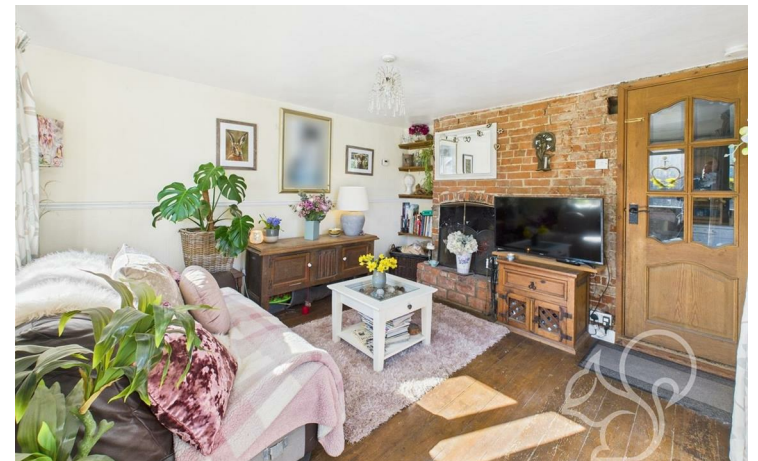
Situated within a quiet position in the popular village of Glemsford, this charming three-bedroom end of terrace cottage on Windmill Row offers a warm and characterful home ideal for first-time buyers, small families, or those seeking a peaceful countryside retreat.

The property welcomes you into a cosy living room, where an exposed red brick fireplace creates a delightful focal point and adds to the traditional

cottage feel. Flowing from the living room is a separate dining area, which in turn opens into a well-equipped kitchen with direct access to the rear garden – perfect for everyday living and entertaining. Completing the ground floor is the family bathroom, featuring a bath with shower over, a low level WC, and wash hand basin. Upstairs, the cottage offers three well-proportioned bedrooms, two of which comfortably accommodate double beds.

Externally, the property benefits from a driveway to the front providing parking for one vehicle, with potential to extend the parking area into the garden if required. The garden itself offers a private outdoor space ready to be shaped to suit your needs.

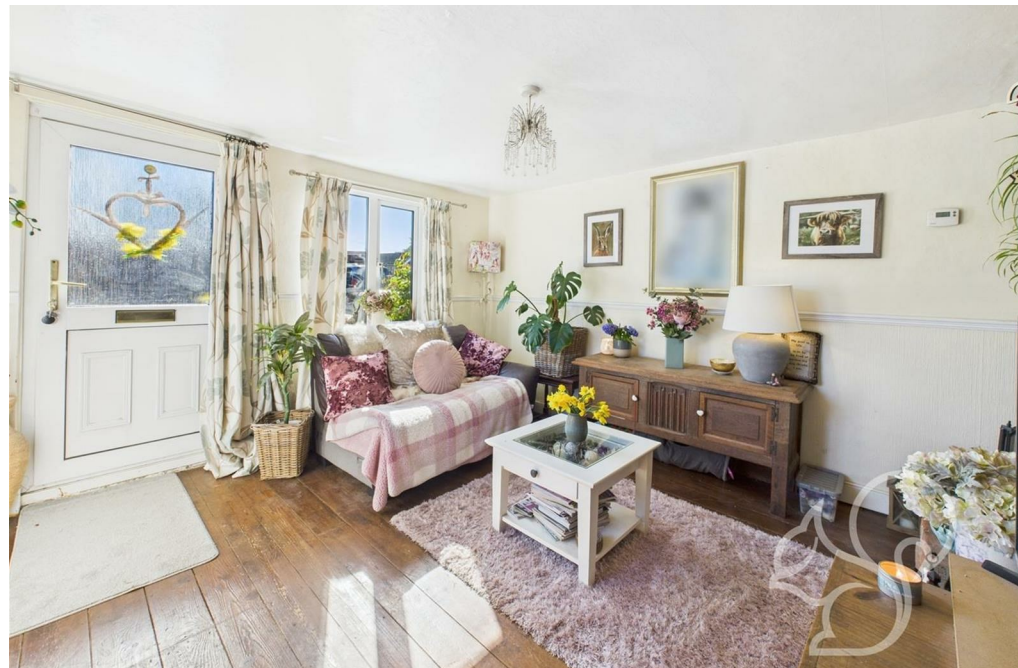
Call Oakheart today to arrange your viewing!

















GIRAFFE360

oakheart