



oakheart



£460,000

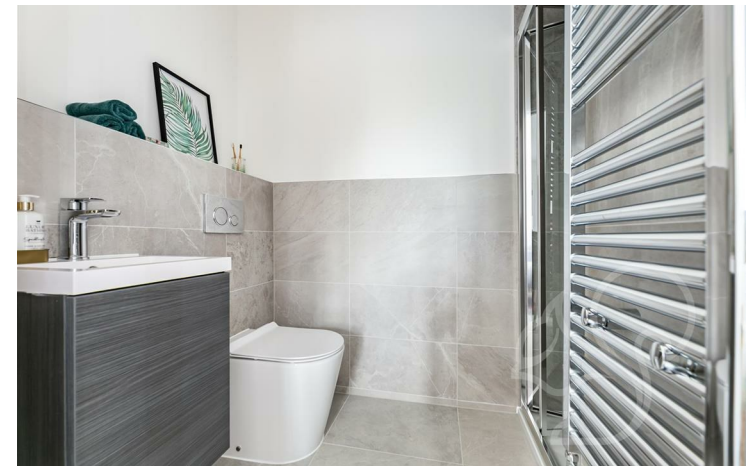
Plot 35 Sudbury Fields



Discover the Stourside House at Sudbury Fields, a beautifully designed four-bedroom detached home perfect for modern family living. Boasting 1162 sq ft of thoughtfully planned space, this home features a welcoming lounge, dedicated study, and a contemporary kitchen/dining area, plus a convenient utility/WC. Upstairs, find four comfortable bedrooms, including a master suite with ensuite, and a family

bathroom. With 4 parking spaces and access to the thriving rural community of Great Cornard, the Stourside offers the blend of classic charm and modern sustainability. Enquire today and come home to Sudbury Fields.

\*Internal Images of of the Show Unit Plot 45

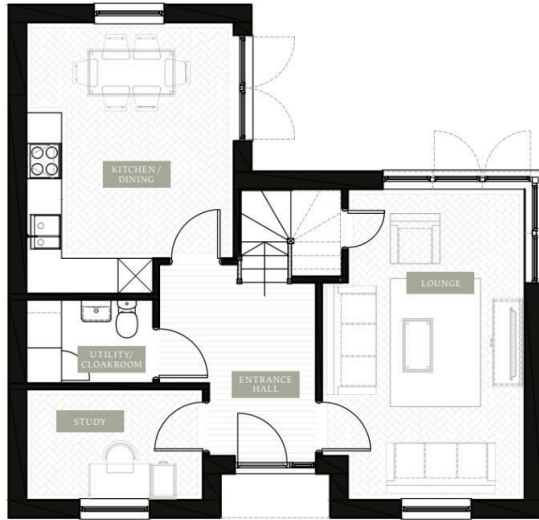












Ground floor



First floor

**Local Authority:**  
Suffolk County Council

**Tenure:**  
Freehold

**Council Tax Band:**  
New Build

#### Energy Efficiency Rating

	Current	Potential
<i>Very energy efficient - lower running costs</i>		
(92 plus) <b>A</b>		
(81-91) <b>B</b>		
(69-80) <b>C</b>		
(55-68) <b>D</b>		
(39-54) <b>E</b>		
(21-38) <b>F</b>		
(1-20) <b>G</b>		
<i>Not energy efficient - higher running costs</i>		
<b>England &amp; Wales</b>	EU Directive 2002/91/EC	

Agents Note: Whilst every care has been taken to prepare these particulars, they are for guidance purposes only. All measurements are approximate and are for general guidance purposes only and whilst every care has been taken to ensure their accuracy, they should not be relied upon.

Oakheart Sudbury  
01787 322 322  
sudbury@oakheart.co.uk  
18 Market Hill, Sudbury, Suffolk, CO10 2EA

**oakheart**