

oakheart



£235,000

Offers In The Region Of
Brook Street, Glemsford

Situated in the popular village of Glemsford, this delightful home offers a perfect blend of character and convenience. The village itself provides a range of amenities, including a school, post office, doctors' surgery, shops, and traditional pubs. Nearby, Long Melford and Sudbury offer further facilities, with Sudbury benefiting from a twice-weekly market and a branch line railway station with direct links to Colchester and London Liverpool Street.

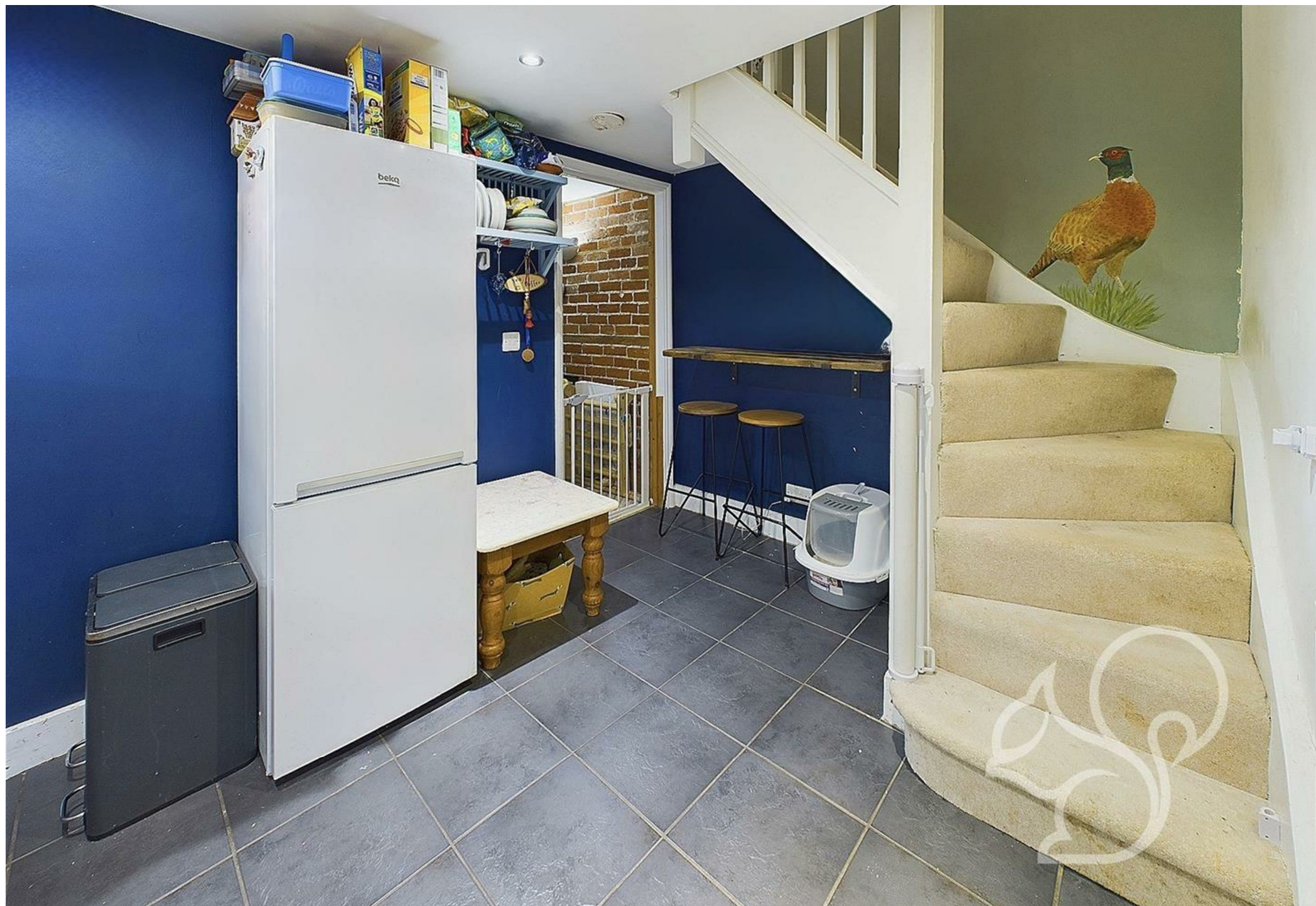
Inside, the property features a cosy lounge with an exposed brick fireplace and wood burner, creating a warm and inviting atmosphere. The well-equipped kitchen leads to a utility area and a ground-floor bathroom. Upstairs, there are two bedrooms, including a spacious principal bedroom with a charming exposed brick feature wall.

Outside, the rear garden offers a peaceful retreat with

a patio seating area, a generous lawn, and a block-paved path leading to a secluded seating space beneath a pergola. A shed is also included, providing additional storage. This characterful home is an excellent choice for those looking for village living with great transport links nearby.

Call Oakheart today to arrange your viewing!











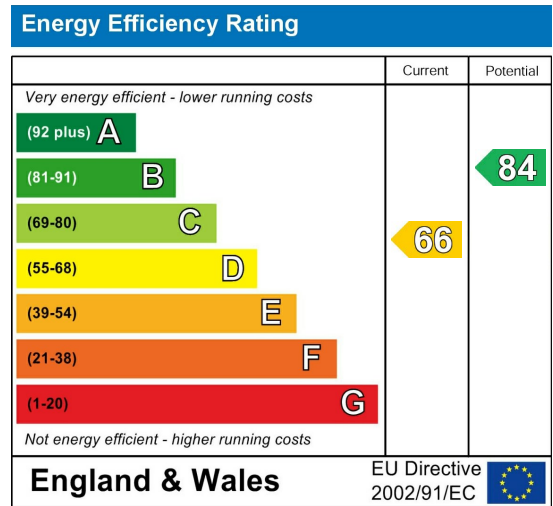
Local Authority:

Tenure:

Freehold

Council Tax Band:

B



Agents Note: Whilst every care has been taken to prepare these particulars, they are for guidance purposes only. All measurements are approximate and are for general guidance purposes only and whilst every care has been taken to ensure their accuracy, they should not be relied upon.