

oakheart

£325,000

Price Guide

Lodge Farm Road, Glemsford





Occupying a private position fronting onto open farmland in the well serviced and widely regarded Suffolk village of Glemsford is this well sized three bedroom detached bungalow. Featuring three double bedrooms, a wrap around garden, off street parking and a garage, viewing on this bungalow is advised.

Entry is gained to an internal porch with door opening into the kitchen. The kitchen features a range of contemporary floor and wall mounted units topped with stone effect work surfaces and

splash backs, integral eye level oven, five ring gas hob with integrated extractor fan and an inset sink and drainer unit with chrome mixer tap. Neighbouring the kitchen is the living room enjoying generous natural light flow and far reaching field views from dual aspect windows, and french style doors opening to the front garden. All three bedrooms allow space to fit double beds, which the principal suite benefits from bespoke integrated wardrobes. Concluding the internal accommodation is the family bathroom comprising of a panel bath with shower over the tub,

low level WC and wash hand basin.

Externally this home features generous gardens to the front and rear, mostly laid to lawn and enclosed by mature shrubs and plants. The rear garden further benefits from a seating terrace, idea for Summer BBQs and a timber shed allowing for dry external storage.

Call Oakheart today to arrange your viewing!







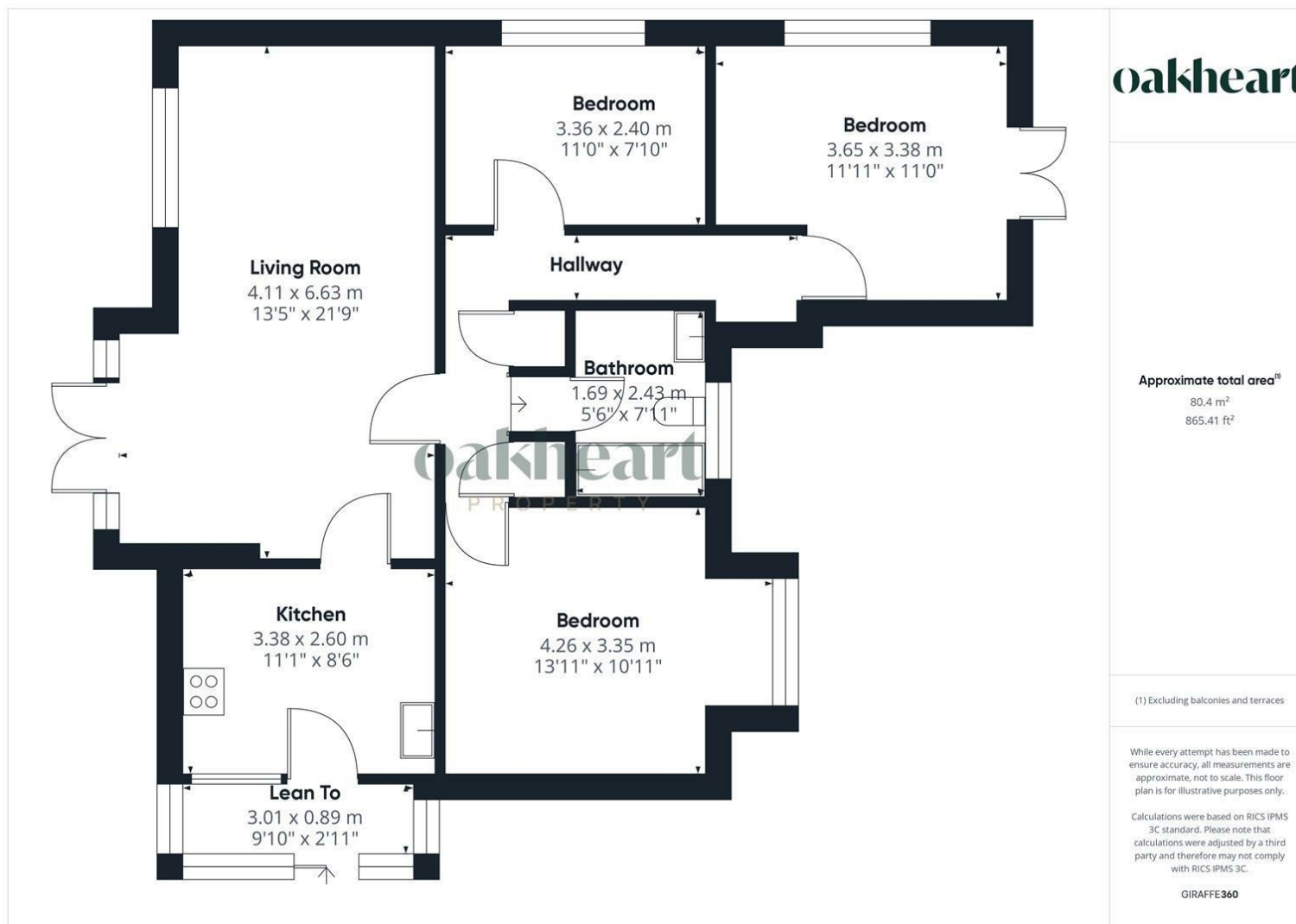












**oakheart**

**Local Authority:**

**Tenure:**  
Freehold

**Council Tax Band:**  
C

### Energy Efficiency Rating

	Current	Potential
<i>Very energy efficient - lower running costs</i>		
(92 plus) <b>A</b>		
(81-91) <b>B</b>		
(69-80) <b>C</b>		
(55-68) <b>D</b>		
(39-54) <b>E</b>		
(21-38) <b>F</b>		
(1-20) <b>G</b>		
<i>Not energy efficient - higher running costs</i>		
<b>England &amp; Wales</b>	EU Directive 2002/91/EC	

Agents Note: Whilst every care has been taken to prepare these particulars, they are for guidance purposes only. All measurements are approximate and are for general guidance purposes only and whilst every care has been taken to ensure their accuracy, they should not be relied upon.

Oakheart Sudbury  
01787 322 322  
sudbury@oakheart.co.uk  
18 Market Hill, Sudbury, Suffolk, CO10 2EA

**oakheart**