

oakheart

£400,000

Plot 28, Sudbury Fields

Part-Exchange
available



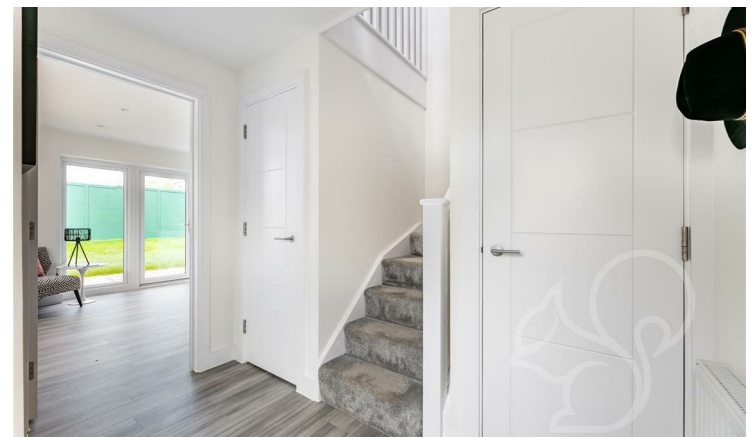
The Brambles at Sudbury Fields are stylish 3-bedroom detached homes, offering 1,087 sq ft of modern living space. These homes seamlessly blend the traditional architecture of Suffolk with contemporary interiors, featuring open-plan living areas flooded with natural light. The high-specification kitchens are equipped with integrated Samsung appliances, including a ceramic hob, double

oven, fridge freezer, and dishwasher. Designed for sustainable living, The Brambles incorporate the latest smart home technology from Samsung SmartThings, allowing you to control heating, lighting, and appliances from your smartphone for ultimate convenience and energy efficiency. With their private gardens, off-street parking, and access to the development's landscaped green spaces, The

Brambles offer a perfect balance of modern amenities and rural tranquility in the charming village of Great Cornard.

*Images depict Plot 46, The Brambles.

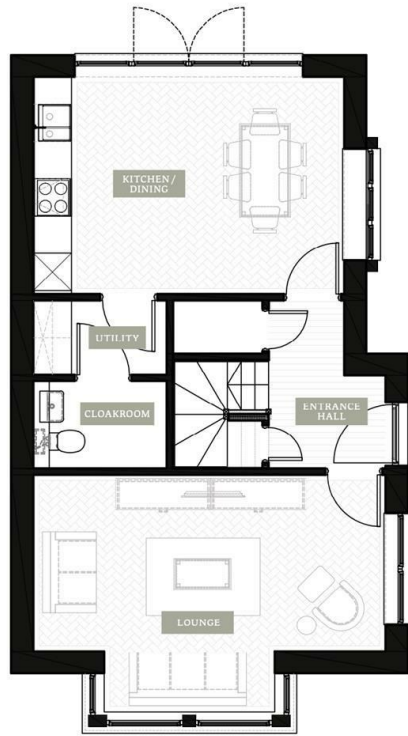
*Area images depict locations close to the development











Ground floor




First floor

Local Authority:
Suffolk County Council

Tenure:
Freehold

Council Tax Band:
New Build

Energy Efficiency Rating

	Current	Potential
<i>Very energy efficient - lower running costs</i>		
(92 plus) A		
(81-91) B		
(69-80) C		
(55-68) D		
(39-54) E		
(21-38) F		
(1-20) G		
<i>Not energy efficient - higher running costs</i>		
England & Wales	EU Directive 2002/91/EC 	

Agents Note: Whilst every care has been taken to prepare these particulars, they are for guidance purposes only. All measurements are approximate and are for general guidance purposes only and whilst every care has been taken to ensure their accuracy, they should not be relied upon.

Oakheart Sudbury
01787 322 322
sudbury@oakheartproperty.co.uk
18a Market Hill, Sudbury, Suffolk, CO10 2EA

oakheart