

NEW AVENUE

OAKWOOD N14

Rowan
HOUSE

**1, 2 & 3 BEDROOM
APARTMENTS**

HOMES 130, 131, 132, 133, 134, 135, 136, 137, 138, 139, 140,
141, 142, 143, 144, 145, 145, 146, 147, 148, 149, 150, 151, 152,
153, 154, 155, 156, 157, 158, 159, 160, 161, 162, 163 & 164

N

NEW AVENUE



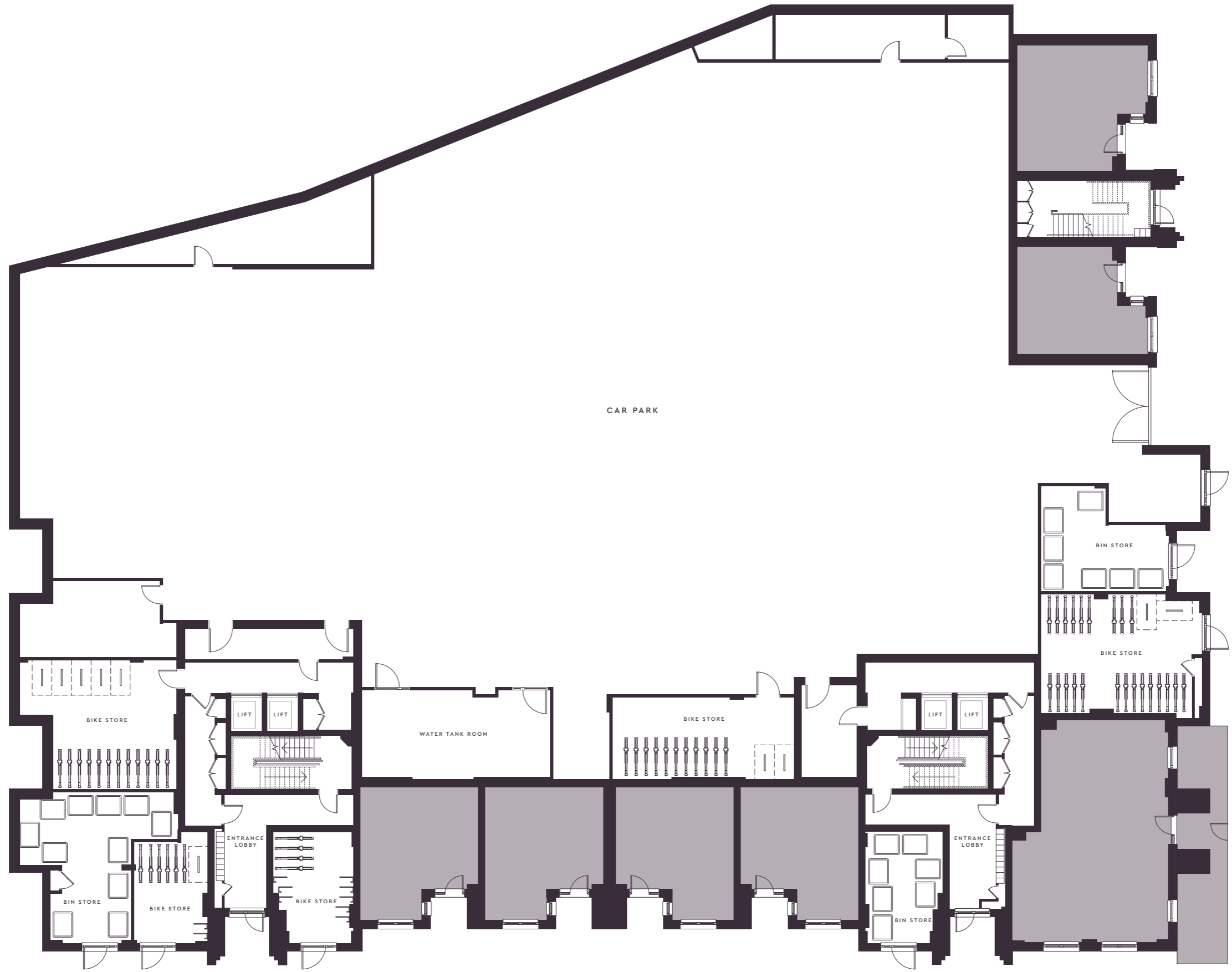
N

NEW AVENUE



Rowan HOUSE

Marketing SUITE



Layouts provide approximate measurements only. Dimensions, which are taken from the indicated points of measurement, are for guidance only and are not intended to be used for carpet sizes, appliance space or items of furniture. Apartment areas are provided as gross internal areas and may vary. Bathroom and kitchen layouts are indicative only and are subject to change. Apartment layout sizes may vary slightly from one another depending on the floor level – please refer to the price list or the Sales Team for more details. The information contained within this document does not constitute part of any offer, contract or warranty. Whilst the plans have been prepared with all due care for the convenience of the intending purchaser, the information contained herein is a preliminary guide only.



Key:
 ST – Storage WM – Washing Machine
 ● 1 Bedroom ● 2 Bedroom

HOME 130
 2 BEDROOM APARTMENT

Kitchen/Living/Dining	7.89m x 3.61m	25'10" x 11'10"
Bedroom 1	5.05m x 3.25m	16'7" x 10'8"
Bedroom 2	3.59m x 3.84m	12'7" x 11'9"
Terrace	3.20m x 1.93m	10'6" x 6'4"
Total Area	78.91 sq. m.	849.38 sq. ft.

HOME 132
 2 BEDROOM APARTMENT

Kitchen/Living/Dining	8.13m x 3.39m	26'8" x 11'1"
Bedroom 1	5.88m x 2.77m	19'4" x 9'1"
Bedroom 2	3.84m x 3.02m	12'7" x 9'11"
Balcony	3.20m x 2.24m	10'6" x 7'4"
Total Area	75.60 sq. m.	813.75 sq. ft.

HOME 134
 1 BEDROOM APARTMENT

Kitchen/Living/Dining	6.71m x 4.06m	22'0" x 13'4"
Bedroom	4.46m x 3.35m	14'8" x 11'0"
Terrace	6.83m x 2.16m	22'5" x 7'1"
Total Area	50.25 sq. m.	540.88 sq. ft.

HOME 131
 2 BEDROOM APARTMENT

Kitchen/Living/Dining	8.13m x 3.39m	26'8" x 11'1"
Bedroom 1	5.88m x 2.77m	19'4" x 9'1"
Bedroom 2	3.84m x 3.02m	12'7" x 9'11"
Balcony	3.20m x 2.24m	10'6" x 7'4"
Total Area	75.60 sq. m.	813.75 sq. ft.

HOME 133
 2 BEDROOM APARTMENT

Kitchen/Living/Dining	7.38m x 3.32m	24'2" x 10'11"
Bedroom 1	5.63m x 3.35m	18'6" x 11'0"
Bedroom 2	4.21m x 2.75m	13'10" x 9'0"
Terrace	5.95m x 2.16m	19'6" x 7'1"
Total Area	75.82 sq. m.	816.11 sq. ft.



Layouts provide approximate measurements only. Dimensions, which are taken from the indicated points of measurement, are for guidance only and are not intended to be used for carpet sizes, appliance space or items of furniture. Apartment areas are provided as gross internal areas and may vary. Bathroom and kitchen layouts are indicative only and are subject to change. Apartment layout sizes may vary slightly from one another depending on the floor level – please refer to the price list or the Sales Team for more details. The information contained within this document does not constitute part of any offer, contract or warranty. Whilst the plans have been prepared with all due care for the convenience of the intending purchaser, the information contained herein is a preliminary guide only.



HOME 135
2 BEDROOM APARTMENT

Kitchen/Living/Dining
8.99m x 4.56m | 29'6" x 15'0"

Bedroom 1
5.44m x 3.13m | 17'10" x 10'3"

Bedroom 2
4.34m x 2.75m | 14'3" x 9'0"

Balcony
5.57m x 1.54m | 18'3" x 5'0"

Total Area
73.87 sq. m | 795.13 sq. ft.

HOME 136
1 BEDROOM APARTMENT

Kitchen/Living/Dining
7.98m x 3.13m | 26'2" x 10'3"

Bedroom
6.18m x 2.75m | 20'3" x 9'0"

Balcony
4.87m x 1.54m | 16'0" x 5'0"

Total Area
54.06 sq. m. | 581.89 sq. ft.

HOME 137
2 BEDROOM APARTMENT

Kitchen/Living/Dining
7.89m x 3.61m | 25'10" x 11'10"

Bedroom 1
5.05m x 3.25m | 16'7" x 10'8"

Bedroom 2
3.59m x 3.84m | 12'7" x 11'9"

Balcony
3.16m x 2.22m | 10'4" x 7'4"

Total Area
78.91 sq. m. | 849.38 sq. ft.

HOME 138
2 BEDROOM APARTMENT

Kitchen/Living/Dining
8.13m x 3.39m | 26'8" x 11'1"

Bedroom 1
5.88m x 2.77m | 19'4" x 9'1"

Bedroom 2
3.84m x 3.02m | 12'7" x 9'11"

Balcony
3.20m x 2.24m | 10'6" x 7'4"

Total Area
75.60 sq. m | 813.75 sq. ft.

HOME 139
2 BEDROOM APARTMENT

Kitchen/Living/Dining
8.13m x 3.39m | 26'8" x 11'1"

Bedroom 1
5.88m x 2.77m | 19'4" x 9'1"

Bedroom 2
3.84m x 3.02m | 12'7" x 9'11"

Balcony
3.20m x 2.24m | 10'6" x 7'4"

Total Area
75.60 sq. m. | 813.75 sq. ft.

HOME 140
2 BEDROOM APARTMENT

Kitchen/Living/Dining
7.38m x 3.32m | 24'3" x 10'11"

Bedroom 1
5.63m x 3.35m | 18'6" x 11'0"

Bedroom 2
4.21m x 2.75m | 13'10" x 9'0"

Balcony
5.52m x 1.51m | 18'1" x 4'11"

Total Area
75.82 sq. m. | 816.11 sq. ft.

HOME 141
1 BEDROOM APARTMENT

Kitchen/Living/Dining
6.71m x 4.06m | 22'0" x 13'4"

Bedroom
4.46m x 3.35m | 14'7" x 11'0"

Balcony
3.47m x 1.54m | 11'5" x 5'0"

Total Area
50.25 sq. m. | 540.88 sq. ft.



Key:
ST – Storage WM – Washing Machine
● 1 Bedroom ● 2 Bedroom

Layouts provide approximate measurements only. Dimensions, which are taken from the indicated points of measurement, are for guidance only and are not intended to be used for carpet sizes, appliance space or items of furniture. Apartment areas are provided as gross internal areas and may vary. Bathroom and kitchen layouts are indicative only and are subject to change. Apartment layout sizes may vary slightly from one another depending on the floor level – please refer to the price list or the Sales Team for more details. The information contained within this document does not constitute part of any offer, contract or warranty. Whilst the plans have been prepared with all due care for the convenience of the intending purchaser, the information contained herein is a preliminary guide only.



HOME 142
2 BEDROOM APARTMENT

Kitchen/Living/Dining Area	8.99m x 4.56m	29'6" x 15'0"
Bedroom 1	5.44m x 3.13m	17'10" x 10'3"
Bedroom 2	4.34m x 2.75m	14'3" x 9'0"
Balcony	5.57m x 1.54m	18'3" x 5'0"
Total Area	73.87 sq. m.	795.13 sq. ft.

HOME 143
1 BEDROOM APARTMENT

Kitchen/Living/Dining	7.98m x 3.13m	26'2" x 10'3"
Bedroom	6.18m x 2.75m	20'3" x 9'0"
Balcony	4.87m x 1.54m	16'0" x 5'0"
Total Area	54.06 sq. m.	581.89 sq. ft.

HOME 144
2 BEDROOM APARTMENT

Kitchen/Living/Dining	7.89m x 3.61m	25'10" x 11'10"
Bedroom 1	5.05m x 3.25m	16'7" x 10'8"
Bedroom 2	3.59m x 3.84m	12'7" x 11'9"
Balcony	3.16m x 2.22m	10'4" x 7'4"
Total Area	78.91 sq. m.	849.38 sq. ft.

HOME 145
2 BEDROOM APARTMENT

Kitchen/Living/Dining	8.13m x 3.39m	26'8" x 11'1"
Bedroom 1	5.88m x 2.77m	19'4" x 9'1"
Bedroom 2	3.84m x 3.02m	12'7" x 9'11"
Balcony	3.20m x 2.24m	10'6" x 7'4"
Total Area	75.60 sq. m.	813.75 sq. ft.

HOME 146
2 BEDROOM APARTMENT

Kitchen/Living/Dining	8.13m x 3.39m	26'8" x 11'1"
Bedroom 1	5.88m x 2.77m	19'4" x 9'1"
Bedroom 2	3.84m x 3.02m	12'7" x 9'11"
Balcony	3.20m x 2.24m	10'6" x 7'4"
Total Area	75.60 sq. m.	813.75 sq. ft.

HOME 147
2 BEDROOM APARTMENT

Kitchen/Living/Dining	7.38m x 3.32m	24'3" x 10'11"
Bedroom 1	5.63m x 3.35m	18'6" x 11'0"
Bedroom 2	4.21m x 2.75m	13'10" x 9'0"
Balcony	5.52m x 1.51m	18'3" x 5'0"
Total Area	75.82 sq. m.	816.11 sq. ft.

HOME 148
1 BEDROOM APARTMENT

Kitchen/Living/Dining	6.71m x 4.06m	22'0" x 13'4"
Bedroom	4.46m x 3.35m	14'7" x 11'0"
Balcony	3.47m x 1.54m	11'5" x 5'0"
Total Area	50.25 sq. m.	540.88 sq. ft.

Key:
ST – Storage WM – Washing Machine
● 1 Bedroom ● 2 Bedroom

Layouts provide approximate measurements only. Dimensions, which are taken from the indicated points of measurement, are for guidance only and are not intended to be used for carpet sizes, appliance space or items of furniture. Apartment areas are provided as gross internal areas and may vary. Bathroom and kitchen layouts are indicative only and are subject to change. Apartment layout sizes may vary slightly from one another depending on the floor level – please refer to the price list or the Sales Team for more details. The information contained within this document does not constitute part of any offer, contract or warranty. Whilst the plans have been prepared with all due care for the convenience of the intending purchaser, the information contained herein is a preliminary guide only.





HOME 149
3 BEDROOM APARTMENT

Kitchen/Living/Dining	8.89m x 5.72m		29'2" x 18'9"
Bedroom 1	3.90m x 3.35m		12'10" x 11'0"
Bedroom 2	3.74m x 3.27m		12'3" x 10'9"
Bedroom 3	3.74m x 3.11m		12'3" x 10'2"
Balcony	3.47m x 1.54m		11'5" x 5'0"
Roof Terrace	12.45m x 1.83m		40'10" x 6'0"
Total Area	104.49 sq. m.		1,124.72 sq. ft.

HOME 150
2 BEDROOM APARTMENT

Kitchen/Living/Dining	7.89m x 3.61m		25'10" x 11'10"
Bedroom 1	5.05m x 3.25m		16'7" x 10'8"
Bedroom 2	3.59m x 3.84m		12'7" x 11'9"
Balcony	3.16m x 2.22m		10'4" x 7'4"
Total Area	78.91 sq. m.		849.38 sq. ft.

HOME 152
2 BEDROOM APARTMENT

Kitchen/Living/Dining	8.13m x 3.39m		26'8" x 11'1"
Bedroom 1	5.88m x 2.77m		19'4" x 9'1"
Bedroom 2	3.84m x 3.02m		12'7" x 9'11"
Balcony	3.20m x 2.24m		10'6" x 7'4"
Total Area	75.60 sq. m.		813.75 sq. ft.

HOME 151
2 BEDROOM APARTMENT

Kitchen/Living/Dining	8.13m x 3.39m		26'8" x 11'1"
Bedroom 1	5.88m x 2.77m		19'4" x 9'1"
Bedroom 2	3.84m x 3.02m		12'7" x 9'11"
Balcony	3.20m x 2.24m		10'6" x 7'4"
Total Area	75.60 sq. m.		813.75 sq. ft.

HOME 153
2 BEDROOM APARTMENT

Kitchen/Living/Dining	7.38m x 3.32m		24'3" x 10'11"
Bedroom 1	5.63m x 3.35m		18'6" x 11'0"
Bedroom 2	4.21m x 2.75m		13'10" x 9'0"
Balcony	5.52m x 1.51m		18'1" x 4'11"
Total Area	75.82 sq. m.		816.11 sq. ft.

HOME 154
1 BEDROOM APARTMENT

Kitchen/Living/Dining	6.71m x 4.06m		22'0" x 13'4"
Bedroom	4.46m x 3.35m		14'7" x 11'0"
Balcony	3.47m x 1.54m		11'5" x 5'0"
Total Area	50.25 sq. m.		540.88 sq. ft.

Key:
ST – Storage WM – Washing Machine
● 1 Bedroom ● 2 Bedroom ● 3 Bedroom

Layouts provide approximate measurements only. Dimensions, which are taken from the indicated points of measurement, are for guidance only and are not intended to be used for carpet sizes, appliance space or items of furniture. Apartment areas are provided as gross internal areas and may vary. Bathroom and kitchen layouts are indicative only and are subject to change. Apartment layout sizes may vary slightly from one another depending on the floor level – please refer to the price list or the Sales Team for more details. The information contained within this document does not constitute part of any offer, contract or warranty. Whilst the plans have been prepared with all due care for the convenience of the intending purchaser, the information contained herein is a preliminary guide only.





Key:
ST – Storage WM – Washing Machine
● 1 Bedroom ● 2 Bedroom

PLOT 155
2 BEDROOM APARTMENT

Kitchen/Living/Dining	7.89m x 3.61m	25'10" x 11'10"
Bedroom 1	5.05m x 3.25m	16'7" x 10'8"
Bedroom 2	3.59m x 3.84m	12'7" x 11'9"
Balcony	3.16m x 2.22m	10'4" x 7'4"
Total Area	78.91 sq. m.	849.38 sq. ft.

PLOT 156
2 BEDROOM APARTMENT

Kitchen/Living/Dining	8.13m x 3.39m	26'8" x 11'1"
Bedroom 1	5.88m x 2.77m	19'4" x 9'1"
Bedroom 2	3.84m x 3.02m	12'7" x 9'11"
Balcony	3.20m x 2.24m	10'6" x 7'4"
Total Area	75.60 sq. m.	813.75 sq. ft.

PLOT 157
2 BEDROOM APARTMENT

Kitchen/Living/Dining	8.13m x 3.39m	26'8" x 11'1"
Bedroom 1	5.88m x 2.77m	19'4" x 9'1"
Bedroom 2	3.84m x 3.02m	12'7" x 9'11"
Balcony	3.20m x 2.24m	10'6" x 7'4"
Total Area	75.60 sq. m.	813.75 sq. ft.

PLOT 158
2 BEDROOM APARTMENT

Kitchen/Living/Dining	7.38m x 3.32m	24'2" x 10'11"
Bedroom 1	5.63m x 3.35m	18'6" x 11'0"
Bedroom 2	4.21m x 2.75m	13'10" x 9'0"
Balcony	5.52m x 1.51m	18'1" x 4'11"
Total Area	75.82 sq. m.	816.11 sq. ft.

PLOT 159
1 BEDROOM APARTMENT

Kitchen/Living/Dining	6.71m x 4.06m	22'0" x 13'4"
Bedroom	4.46m x 3.35m	14'7" x 11'0"
Balcony	3.47m x 1.54m	11'5" x 5'0"
Total Area	50.25 sq. m.	540.88 sq. ft.



Layouts provide approximate measurements only. Dimensions, which are taken from the indicated points of measurement, are for guidance only and are not intended to be used for carpet sizes, appliance space or items of furniture. Apartment areas are provided as gross internal areas and may vary. Bathroom and kitchen layouts are indicative only and are subject to change. Apartment layout sizes may vary slightly from one another depending on the floor level – please refer to the price list or the Sales Team for more details. The information contained within this document does not constitute part of any offer, contract or warranty. Whilst the plans have been prepared with all due care for the convenience of the intending purchaser, the information contained herein is a preliminary guide only.



Key:
ST – Storage WM – Washing Machine
● 1 Bedroom ● 2 Bedroom

PLOT 160
2 BEDROOM APARTMENT

Kitchen/Living/Dining	7.89m x 3.61m	25'10" x 11'10"
Bedroom 1	5.05m x 3.25m	16'7" x 10'8"
Bedroom 2	3.59m x 3.84m	12'7" x 11'9"
Balcony	3.16m x 2.22m	10'4" x 7'4"
Total Area	78.91 sq. m.	849.38 sq. ft.

PLOT 162
2 BEDROOM APARTMENT

Kitchen/Living/Dining	8.13m x 3.39m	26'8" x 11'1"
Bedroom 1	5.88m x 2.77m	19'4" x 9'1"
Bedroom 2	3.84m x 3.02m	12'7" x 9'11"
Balcony	3.20m x 2.24m	10'6" x 7'4"
Total Area	75.60 sq. m.	813.75 sq. ft.

PLOT 164
1 BEDROOM APARTMENT

Kitchen/Living/Dining	6.71m x 4.06m	22'0" x 13'4"
Bedroom	4.46m x 3.35m	14'7" x 11'0"
Balcony	3.47m x 1.54m	11'5" x 5'0"
Total Area	50.25 sq. m.	540.88 sq. ft.

PLOT 161
2 BEDROOM APARTMENT

Kitchen/Living/Dining	8.13m x 3.39m	26'8" x 11'1"
Bedroom 1	5.88m x 2.77m	19'4" x 9'1"
Bedroom 2	3.84m x 3.02m	12'7" x 9'11"
Balcony	3.20m x 2.24m	10'6" x 7'4"
Total Area	75.60 sq. m.	813.75 sq. ft.

PLOT 163
2 BEDROOM APARTMENT

Kitchen/Living/Dining	7.38m x 3.32m	24'2" x 10'11"
Bedroom 1	5.63m x 3.35m	18'6" x 11'0"
Bedroom 2	4.21m x 2.75m	13'10" x 9'0"
Balcony	5.52m x 1.51m	18'1" x 4'11"
Total Area	75.82 sq. m.	816.11 sq. ft.



Layouts provide approximate measurements only. Dimensions, which are taken from the indicated points of measurement, are for guidance only and are not intended to be used for carpet sizes, appliance space or items of furniture. Apartment areas are provided as gross internal areas and may vary. Bathroom and kitchen layouts are indicative only and are subject to change. Apartment layout sizes may vary slightly from one another depending on the floor level – please refer to the price list or the Sales Team for more details. The information contained within this document does not constitute part of any offer, contract or warranty. Whilst the plans have been prepared with all due care for the convenience of the intending purchaser, the information contained herein is a preliminary guide only.



NEW AVENUE

OAKWOOD N14



www.newavenue-oakwood.co.uk
Avenue Road, Oakwood, London N14 4DG



COUNTRYSIDE
Places People Love