



Oathills Crescent, Paignton

Paignton

£150,000

ABSOLUTE



Oathills Crescent

Paignton,

Modern 3-bed end of terrace with shared ownership (50% available) in coveted location. Features spacious living room, contemporary kitchen, ensuite master bedroom, driveway, enclosed garden, and proximity to amenities and transport links. Comfort, convenience, and modern living combined.

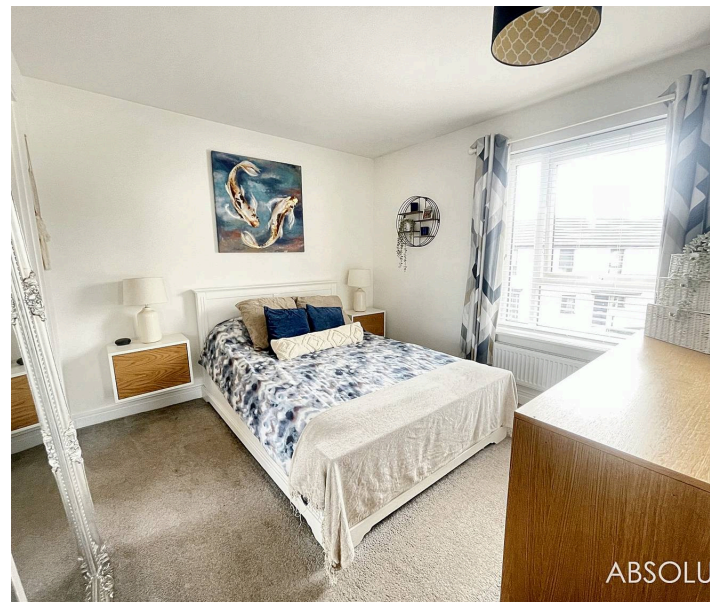
Council Tax band: D

Tenure: Leasehold

EPC Energy Efficiency Rating: B

EPC Environmental Impact Rating: B

- Modern three bedroom end of terrace home
- Shared ownership property - 50% available
- Good size living room with feature fireplace and doors out onto the garden
- Contemporary kitchen/dining room
- Downstairs WC
- Three bedrooms with principle ensuite & dressing area
- Family bathroom/WC
- Driveway parking for two vehicles
- Enclosed level garden with gated rear access
- Close to nearby schools, shops, sport facilities & bus stops



16 Oathills Crescent

Paignton, Paignton

There are plenty of shopping and retail spaces within a few minutes walk from the property, there are bus services close by, and beaches are just a short drive away. On the doorstep you will find South Devon College and further secondary & primary schools. The property itself is in fantastic condition, and has been well maintained by its current owners, and an internal viewing is highly recommended.

Agents notes;

50% being sold

Rent - £ 464.89 per month to Heylo

120 year left of the lease remaining

Absolute Sales & Lettings

Absolute Sales & Lettings, 27 Hyde Road - TQ4 5BP

01803 890110

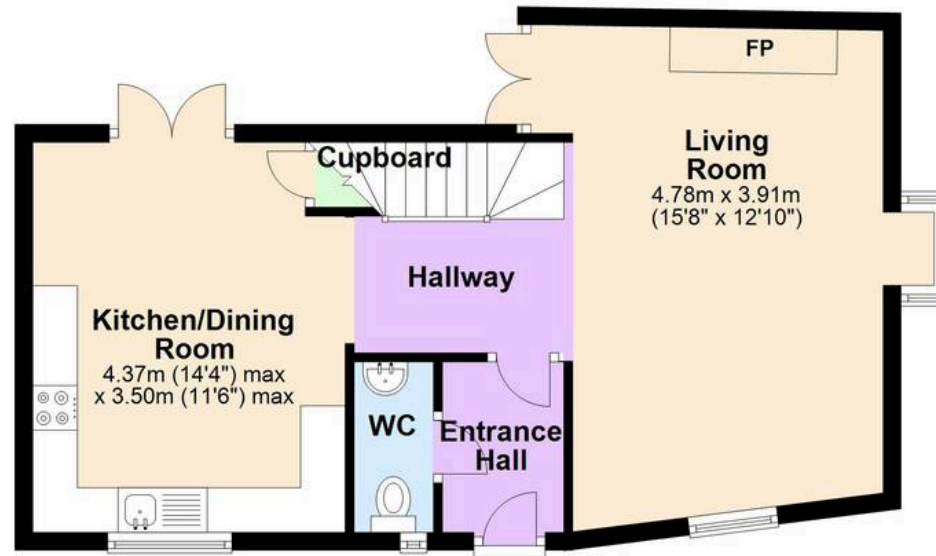
paignton@movewithabsolute.co.uk

<http://www.movewithabsolute.co.uk>



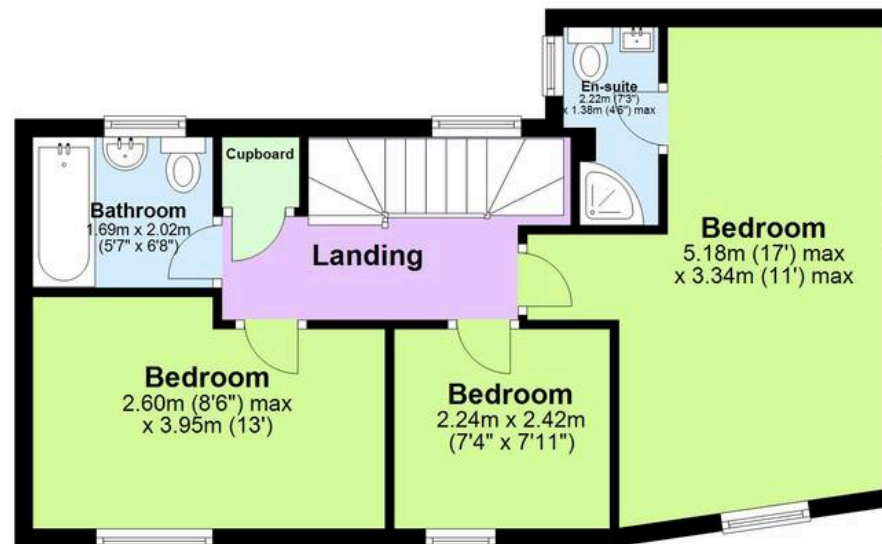
Ground Floor

Approx. 46.1 sq. metres (496.4 sq. feet)



First Floor

Approx. 45.7 sq. metres (491.6 sq. feet)



Total area: approx. 91.8 sq. metres (988.0 sq. feet)

Approx
Plan produced using PlanUp.

