

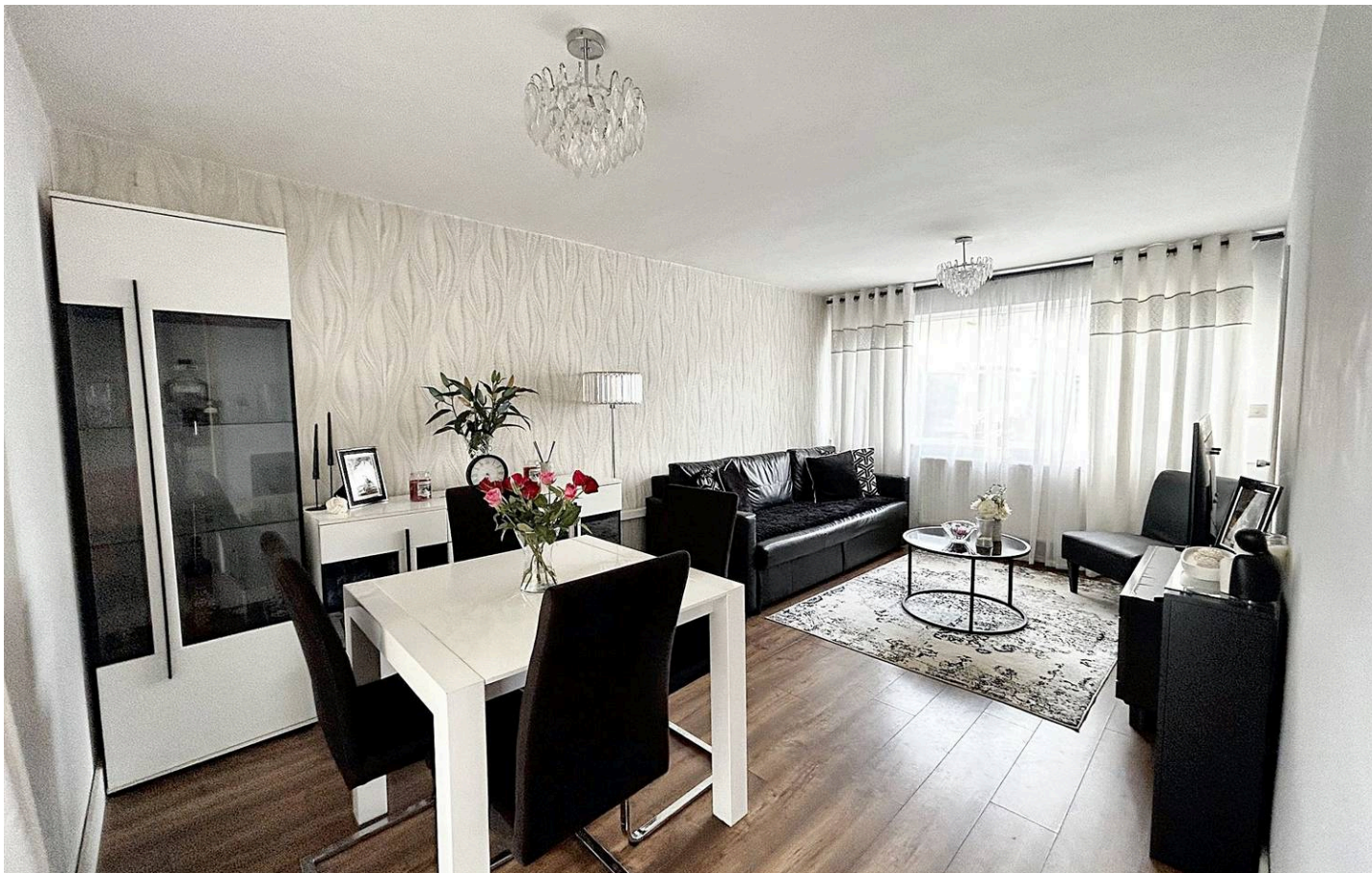


73 Manor Road, Newton Abbot

Newton Abbot

Guide Price **£225,000**

ABSOLUTE



73 Manor Road

Newton Abbot, Newton Abbot

Modern 2-bed semi-detached house with spacious living/dining room, contemporary kitchen, and 2 double bedrooms. Front and rear gardens, garage, and allocated parking. Close to schools, shops, and Bakers Park. Ideal for families seeking peaceful yet connected lifestyle.

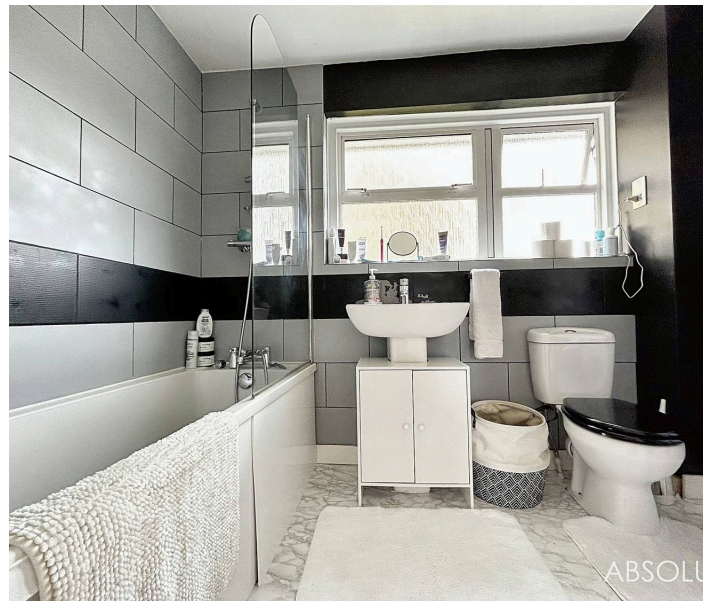
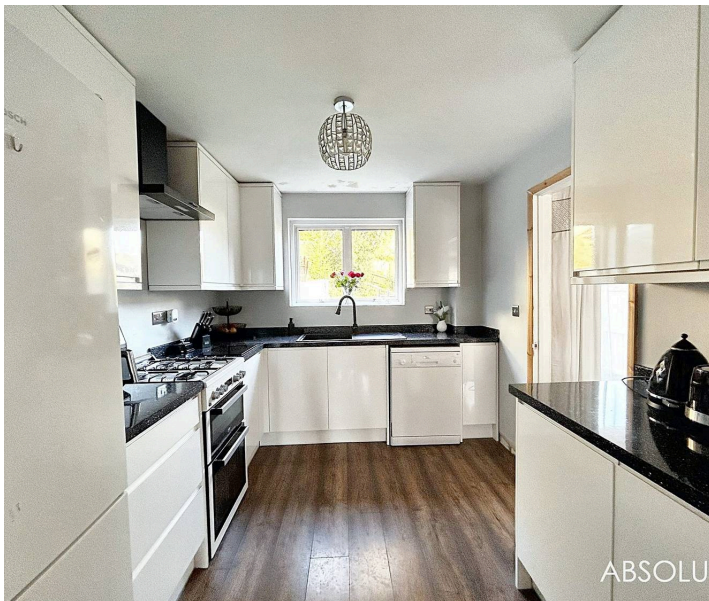
Council Tax band: B

Tenure: Freehold

EPC Energy Efficiency Rating: D

EPC Environmental Impact Rating: D

- Two bedroom semi-detached house in quiet location
- Living/dining room with access onto the rear garden
- Modern fitted kitchen
- Two double bedrooms
- Contemporary bathroom/WC
- Front and a good size rear garden
- Garage in a bloc & allocated parking space
- uPVC double glazing & gas central heating
- Within close proximity of schools, shops & Bakers Park
- Current owners have done some home improvements which include new kitchen, plumbing and windows



73 Manor Road

Newton Abbot, Newton Abbot

The property is located in a popular residential area within Newton Abbot, giving excellent access to local amenities including shops, primary and secondary schools and regular bus services. Newton Abbot gives good links either by road or train to the nearby towns of Torquay, Paignton, Totnes and Exeter.

Absolute Sales & Lettings

Absolute Sales & Lettings, 27 Hyde Road - TQ4 5BP

01803 890110

paignton@movewithabsolute.co.uk

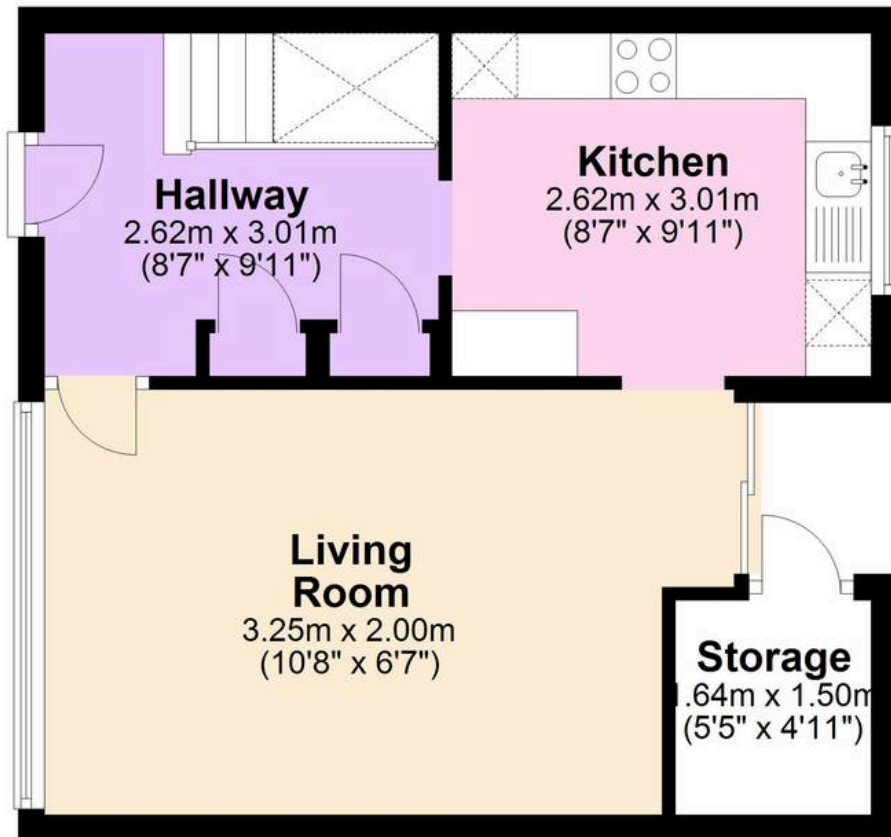
<http://www.movewithabsolute.co.uk>



ABS

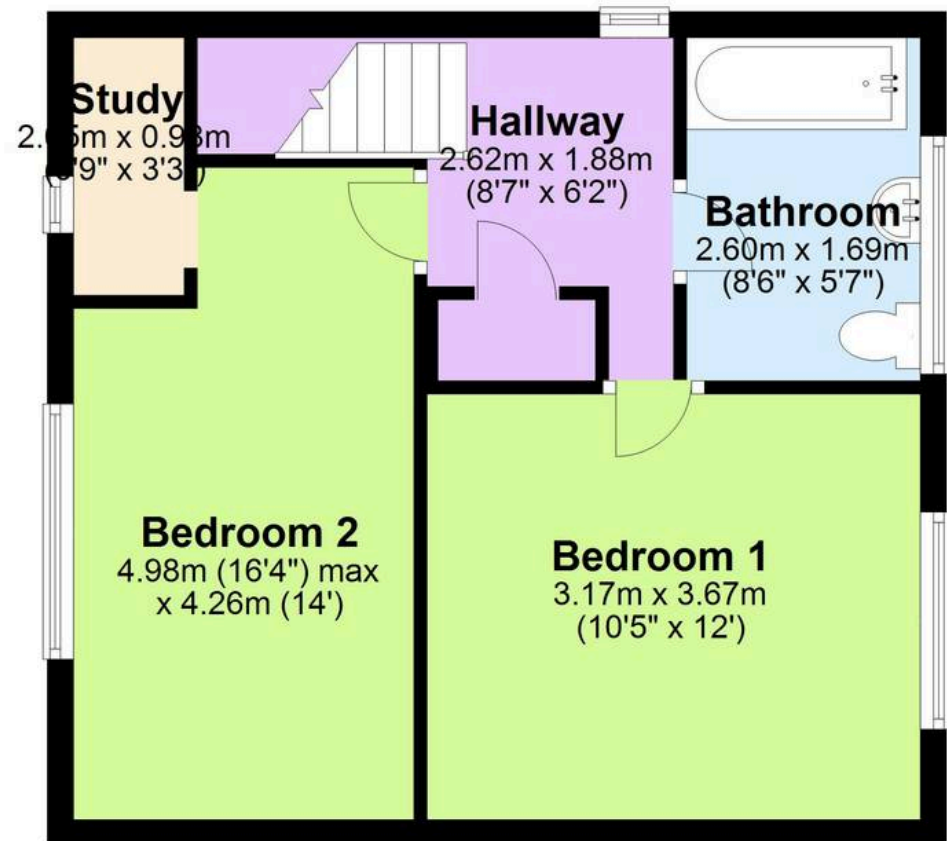
Ground Floor

Approx. 35.3 sq. metres (379.7 sq. feet)



First Floor

Approx. 44.5 sq. metres (479.3 sq. feet)



Total area: approx. 79.8 sq. metres (859.0 sq. feet)

Approx
Plan produced using PlanUp.

