



Antony Court, Esplanade Road, Paignton

Paignton

Guide Price £162,500

ABSOLUTE



Antony Court

Esplanade Road, Paignton

Ground floor 2 double bedroom flat near Paignton seafront. Accommodation comprises lounge with French doors to communal gardens, fitted kitchen, en-suite to the main bedroom, built-in wardrobes, bathroom, gas central heating, uPVC double glazing. Stone's throw from the sea front. No onward chain.

Council Tax band: B

Tenure: Leasehold

EPC Energy Efficiency Rating: C

EPC Environmental Impact Rating: C

- Ground Floor Flat
- Sea front location
- 2 Double Bedrooms both with built in wardrobes
- En-suite shower room and family bathroom
- Open-plan lounge and fitted kitchen
- uPVC Double glazing and gas central heating
- Light and airy accommodation
- Enclosed communal gardens
- No onward chain



Antony Court

Esplanade Road, Paignton

The property is located in a level location, and approximately a minutes walk front Paignton seafront, with its wonderful green, beaches and stunning coastal walk, linking the nearby towns of Brixham and Torquay. Paignton town centre with all its amenities is also only a short stroll away, along with regular bus services and the train station.

Agents notes -

Lease - 999 years from 2004

Service charge £710.60 paid 6 monthly

Ground rent - £50 per annum

Management company - Crown

No pets

Absolute Sales & Lettings

Absolute Sales & Lettings, 27 Hyde Road - TQ4 5BP

01803 890110

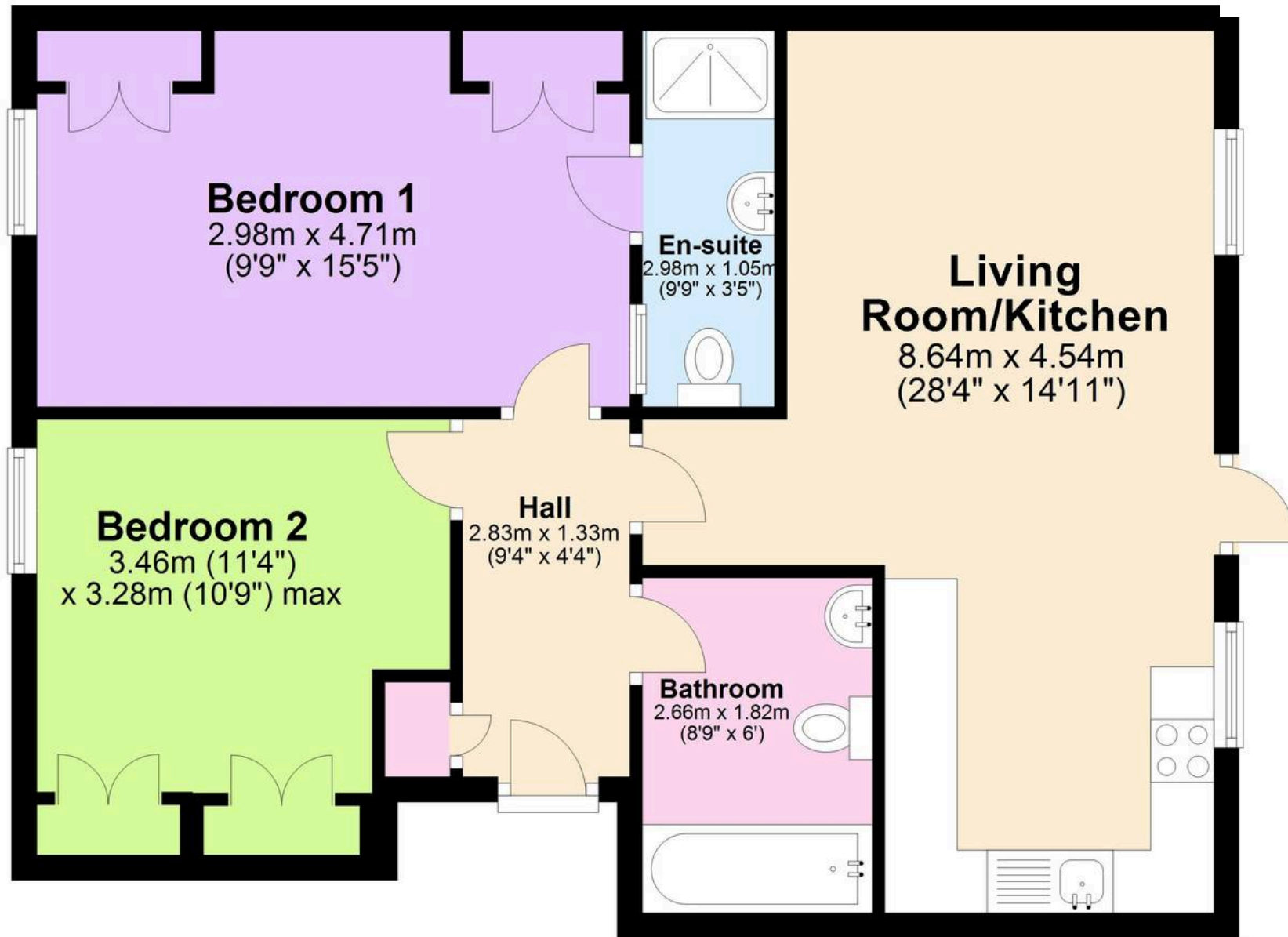
paignton@movewithabsolute.co.uk

<http://www.movewithabsolute.co.uk>



Ground Floor

Approx. 69.3 sq. metres (746.3 sq. feet)



Total area: approx. 69.3 sq. metres (746.3 sq. feet)

