

Surf, Cliff Park Road, Paignton

Paignton

Guide Price £195,000

ABSOLUTE



Surf, Cliff Park Road

Paignton

Ground floor 2-bed apartment in sought-after area with modern kitchen, ensuite bedroom, and utility/conservatory. Private entrance, parking, and communal gardens close to Goodrington Beach.

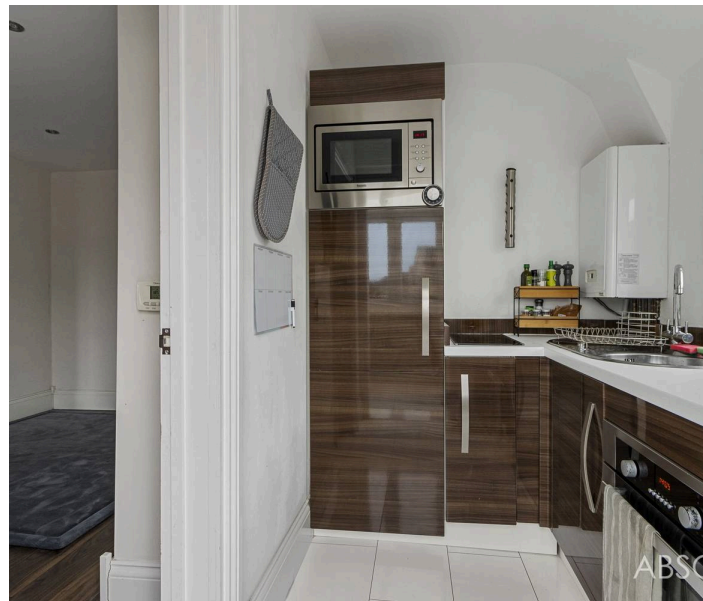
Council Tax band: A

Tenure: Leasehold

EPC Energy Efficiency Rating: D

EPC Environmental Impact Rating: D

- Ground floor two bedroom apartment in a desirable area
- Living/dining room
- Fitted modern kitchen
- Utility/conservatory with bi-fold window
- Principle ensuite & shower room/WC
- uPVC double glazing & gas central heating
- Allocated parking space and visitor space
- Own private entrance
- Close to Goodrington Beach and local shops



Surf, Cliff Park Road

Paignton

Situated in the popular area of Goodrington and within close proximity of the beach. Also convenient for local shops, eateries and bus routes. Ideal for train enthusiasts as the steam railway is located a short distance away.

Absolute Sales & Lettings

Absolute Sales & Lettings, 27 Hyde Road – TQ4 5BP

01803 890110

paignton@movewithabsolute.co.uk

<http://www.movewithabsolute.co.uk>



Ground Floor

Approx. 53.0 sq. metres (570.8 sq. feet)



Total area: approx. 53.0 sq. metres (570.8 sq. feet)

Approx
Plan produced using PlanUp.

