



16 Belfield Way, Marldon - TQ3 1NY

Guide Price £479,950





16 Belfield Way

Marldon, Paignton

Stylish 4-bed detached dormer bungalow in a serene village setting. Stunning kitchen/dining room, spacious lounge, utility room, and downstairs WC. Master suite with en-suite shower room, family bathroom, enclosed rear garden, and parking for 2/3 cars. Impeccably presented with quality finishes, offering refined village living.

Council Tax band: C

Tenure: Freehold

EPC Energy Efficiency Rating: G

EPC Environmental Impact Rating: G

- Superbly presented detached dormer bungalow
- 4 Bedrooms
- Stunning kitchen/dining room with modern fitted kitchen units and integrated appliances
- Spacious lounge with bay fronted window enjoying open village and countryside views
- Separate utility room & downstairs WC
- Extremely spacious, stylish en-suite shower room
- Spacious family bathroom
- Attractive level and enclosed rear garden
- Views across towards the Teign Valley & Haytor
- Blocked paved driveway providing parking for 3 cars



16 Belfield Way

Marldon, Paignton

The property is located in the sought after village of Marldon. There are many local amenities located close by including a village hall and green, a primary school, local shops and bus services. Paignton town centre is approximately 3.5 miles away and the town of Totnes is approximately 5.5 miles away. The Ring Road is located close by, linking the nearby towns of Torquay, Brixham and Newton Abbot. Paignton town centre has a branch railway line, linking to mainline station in Newton Abbot.

Absolute Sales & Lettings

Absolute Sales & Lettings, 36 Fore Street - TQ5 8DZ

01803 214214

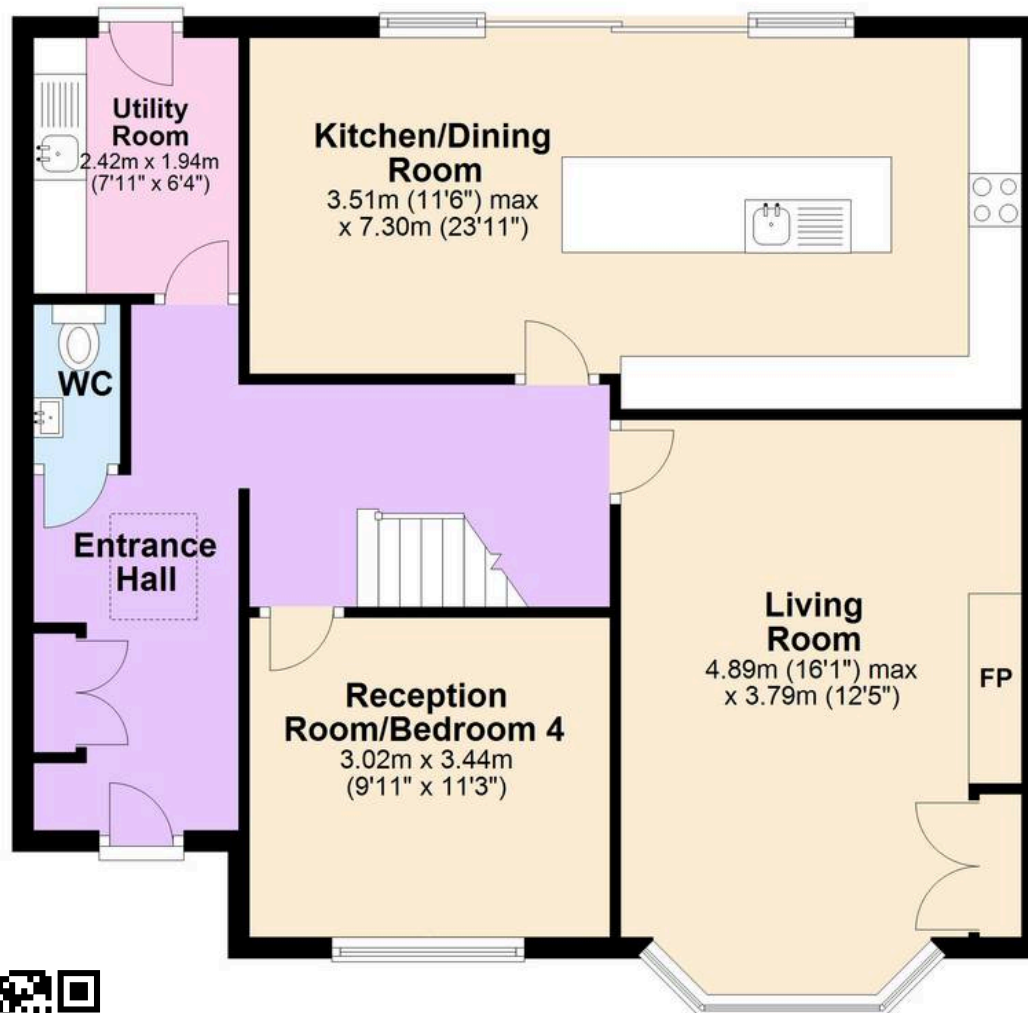
brixham@movewithabsolute.co.uk

movewithabsolute.co.uk/



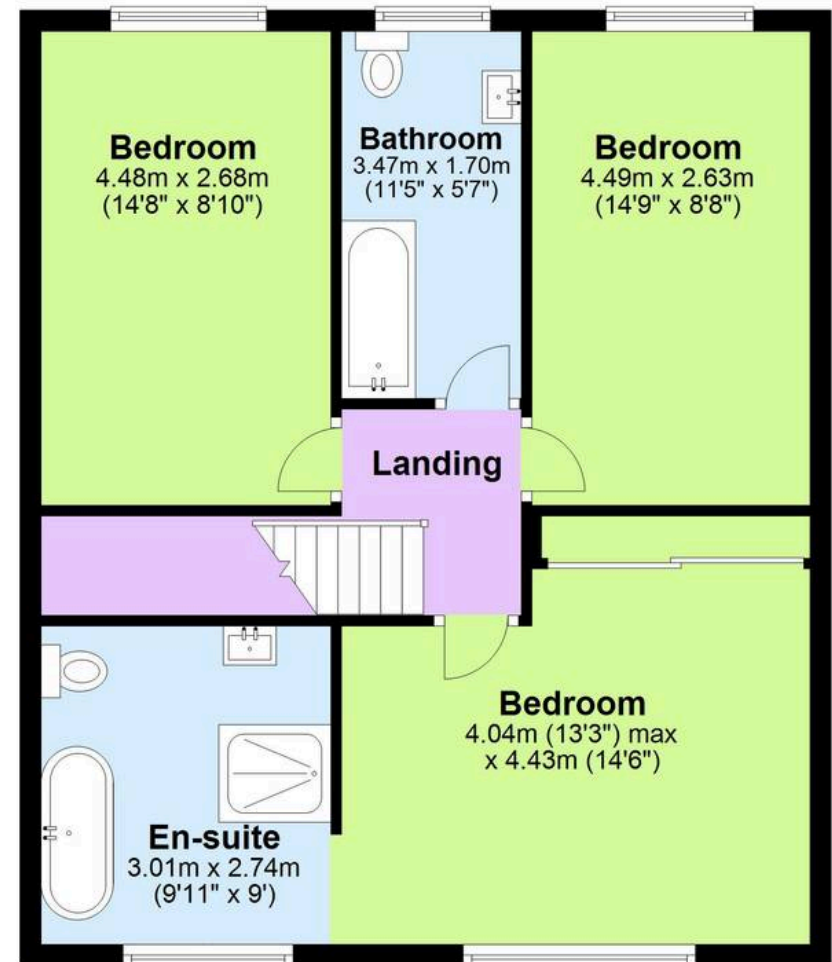
Ground Floor

Approx. 77.9 sq. metres (838.0 sq. feet)



First Floor

Approx. 62.5 sq. metres (673.2 sq. feet)



Total area: approx. 140.4 sq. metres (1511.2 sq. feet)

Approx
Plan produced using PlanUp.

