



Pegasus Court, Torquay Road, Paignton

Guide Price **£140,000**

Paignton

ABSOLUTE

Pegasus Court, Torquay Road

Paignton

Immaculate 2-bed retirement flat for residents over 55s. Light living room with juliet balconies, modern kitchen, spacious shower room/wc. Secure parking, lift access, communal facilities, gardens, and activities. Enjoy vibrant community living in a convenient, accessible location. Council Tax band: E

Tenure: Leasehold

EPC Energy Efficiency Rating: C

EPC Environmental Impact Rating: C

- Immaculately presented two bedroom first floor retirement flat
- Light living room with two Juliet balconies
- Modern fitted kitchen
- Spacious modern shower room/wc
- Secure underground parking with lift access
- Communal lounges and restaurant
- Popular position situated on the level close to bus stops and shops
- Communal lounge, laundry room and on site restaurant
- Onsite manager & emergency pull cords
- Retirement flat for over 55s



Pegasus Court, Torquay Road

Paignton

Situated in level Preston and just a stone throw away from Preston shops and within close proximity to local amenities and Preston beach. Paignton town centre is approximately less than a mile distance with its further array of shops, facilities and amenities. Right on your doorstep is the beautiful Oldway Mansion with its immaculate gardens. An internal inspection is highly recommended to appreciate the condition and position that the accommodation boasts. Agents notes; Leasehold Property - 116 years remaining Maintenance Charges £4000 pa - to include water charges, buildings insurance, general maintenance, cleaning, cost of an on site administrator and accommodation, heating and external decoration of communal areas, external decoration, gardening, lift maintenance, window cleaning (6 times a year).

Absolute Sales & Lettings

Absolute Sales & Lettings, 27 Hyde Road - TQ4 5BP

01803 890110

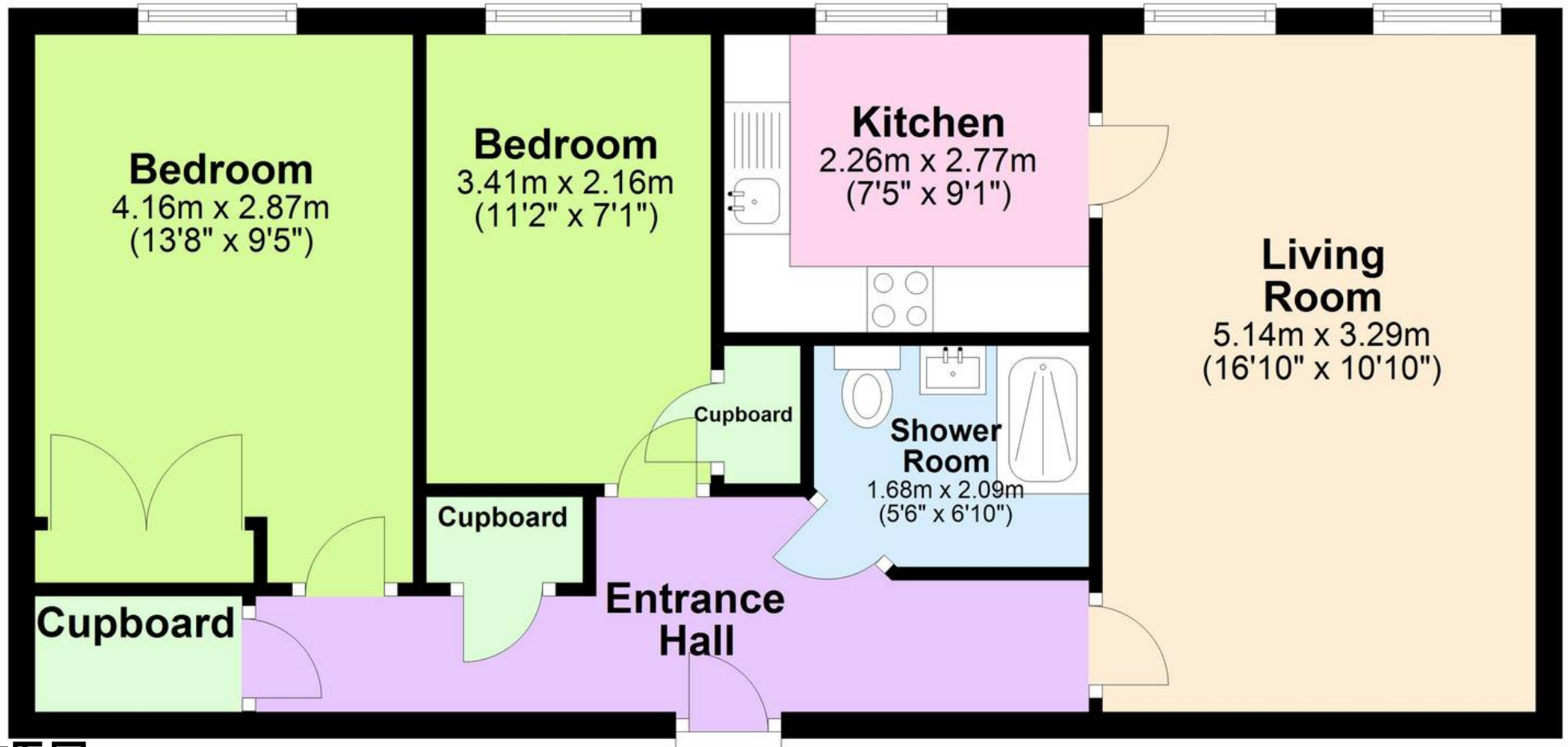
paignton@movewithabsolute.co.uk

<http://www.movewithabsolute.co.uk>



Ground Floor

Approx. 58.5 sq. metres (629.2 sq. feet)



Total area: approx. 58.5 sq. metres (629.2 sq. feet)

Approx
Plan produced using PlanUp.

