



Grand Banks, Clay Lane

Teignmouth

Guide Price £235,000

ABSOLUTE



Grand Banks, Clay Lane

Teignmouth

Luxury one-bedroom ground floor flat in Teignmouth with bi-fold doors opening onto private balcony. Features include communal gym, EV charging, underfloor heating, and views towards the Shaldon Village. Ideal for luxury living near beach and town centre.

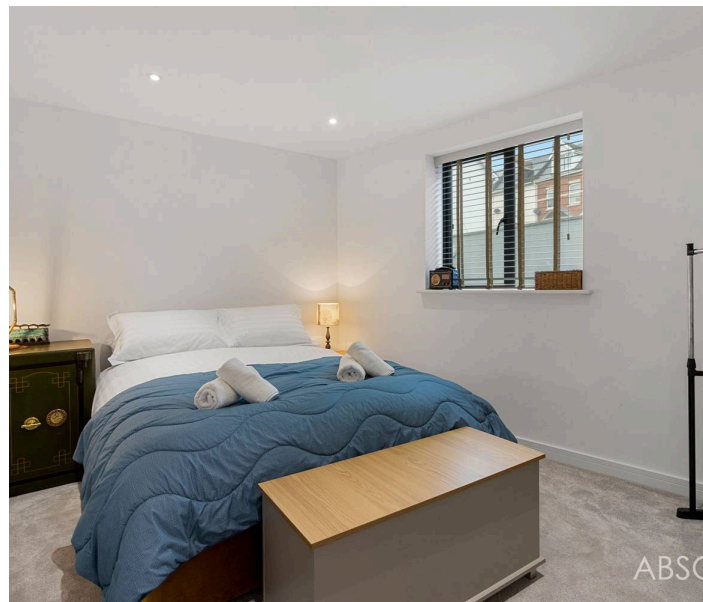
Council Tax band: C

Tenure: Leasehold

EPC Energy Efficiency Rating: B

EPC Environmental Impact Rating:

- Luxury ground floor one bedroom apartment
- Bi-fold doors opening onto private balcony
- Double bedroom
- Well appointed modern kitchen
- Open plan living space with feature window
- Communal onsite gym
- Secured parking for 1 vehicle & communal EV charging point
- Lift access
- Fibre optic installed & communal satellite installed
- Views across to Shaldon Village & within walking distance to Teignmouth town centre & beaches



Grand Banks, Clay Lane

Teignmouth

Grand Banks is situated in the large seaside town of Teignmouth and is across the Estuary from the quaint village of Shaldon. The historical city of Exeter and Torbay are both within a short drive. There are a range of excellent beaches within walking distance. The popular 'Back Beach' is less than 5 minutes away with its bustling bars and pubs, which makes it an ideal place to relax and enjoy the evening sun. There are also many coastal and countryside walks nearby and the infamous Dartmoor is less than 30 minutes away. Teignmouth, and the village of Shaldon, offers a range of local amenities including pubs, restaurants, shops and supermarkets.

Agent notes; Service charge - £1416.69 per annum
Lease length remaining 997 years

Holiday lets allowed, Pets considered

Absolute Sales & Lettings

Absolute Sales & Lettings, 27 Hyde Road - TQ4 5BP

01803 890110

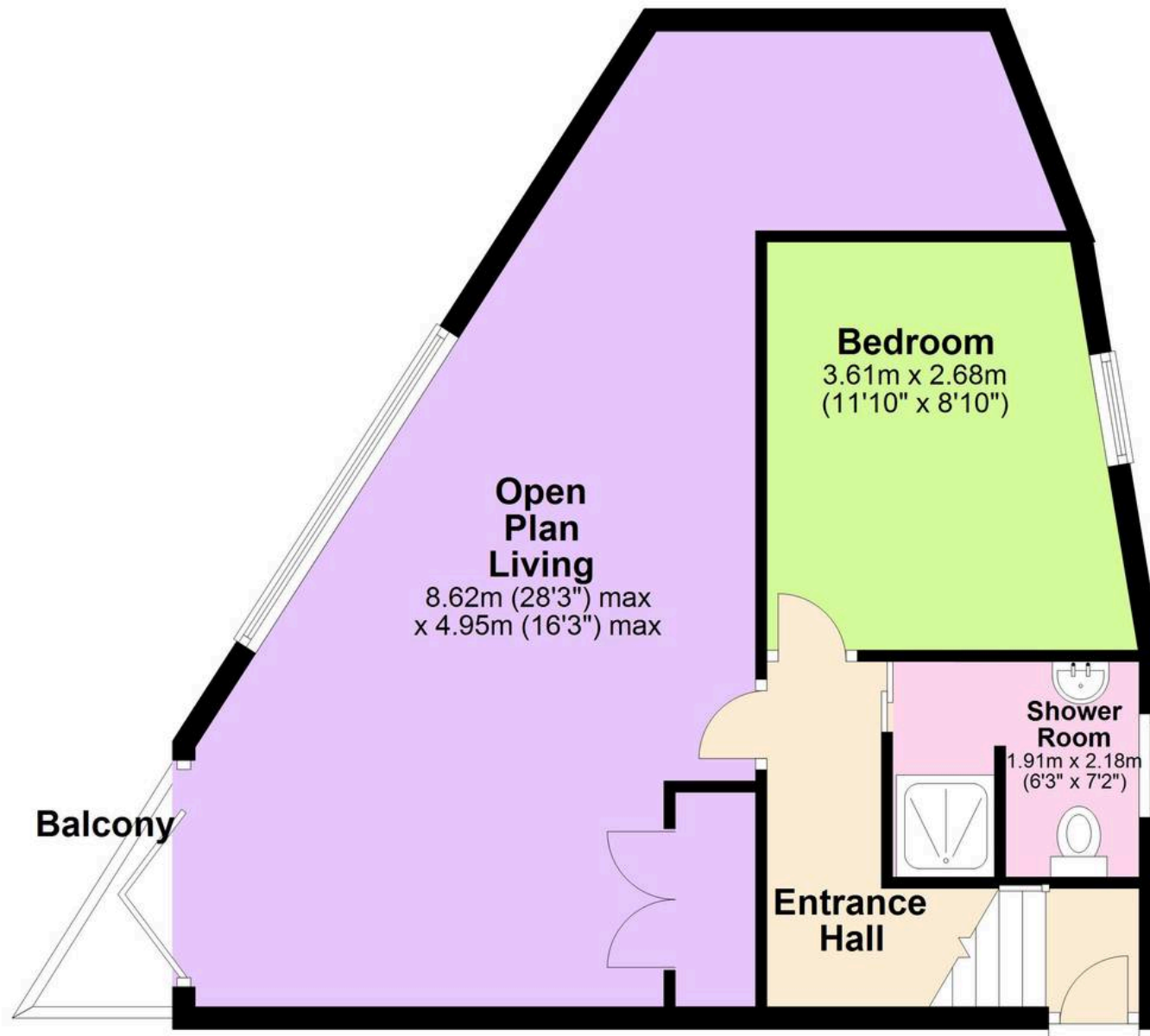
paignton@movewithabsolute.co.uk

<http://www.movewithabsolute.co.uk>



Ground Floor

Approx. 56.1 sq. metres (604.3 sq. feet)



Total area: approx. 56.1 sq. metres (604.3 sq. feet)

Approx
Plan produced using PlanUp.

