



Surf, Cliff Park Road, Paignton

Paignton

£140,000



## Surf

Cliff Park Road, Paignton

Charming coastal 1-bed flat with private entrance, modern kitchen, stylish shower room, and double bedroom. Allocated parking, communal gardens, and visitor parking. No chain. Tranquil outdoor space with seating areas. Ideal for beach lovers and first-time buyers.

Council Tax band: A

Tenure: Leasehold

EPC Energy Efficiency Rating: D

EPC Environmental Impact Rating: D

- 1 Bedroom
- Allocated Parking and Visitors Parking
- Communal Gardens
- Proximity To Beach
- No Onward Chain
- Double Glazing and Electric Storage Heating
- Modern kitchen and shower room
- Own private entrance
- Convenient for local shops and bus routes
- Ideal second home due to location



# Surf

Cliff Park Road, Paignton

Situated in the popular area of Goodrington and within close proximity of the beach. Also convenient for local shops, eateries and bus routes. Ideal for train enthusiasts as the steam railway is located a short distance away.

## Absolute Sales & Lettings

Absolute Sales & Lettings, 27 Hyde Road - TQ4 5BP

01803 890110

paignton@movewithabsolute.co.uk

<http://www.movewithabsolute.co.uk>

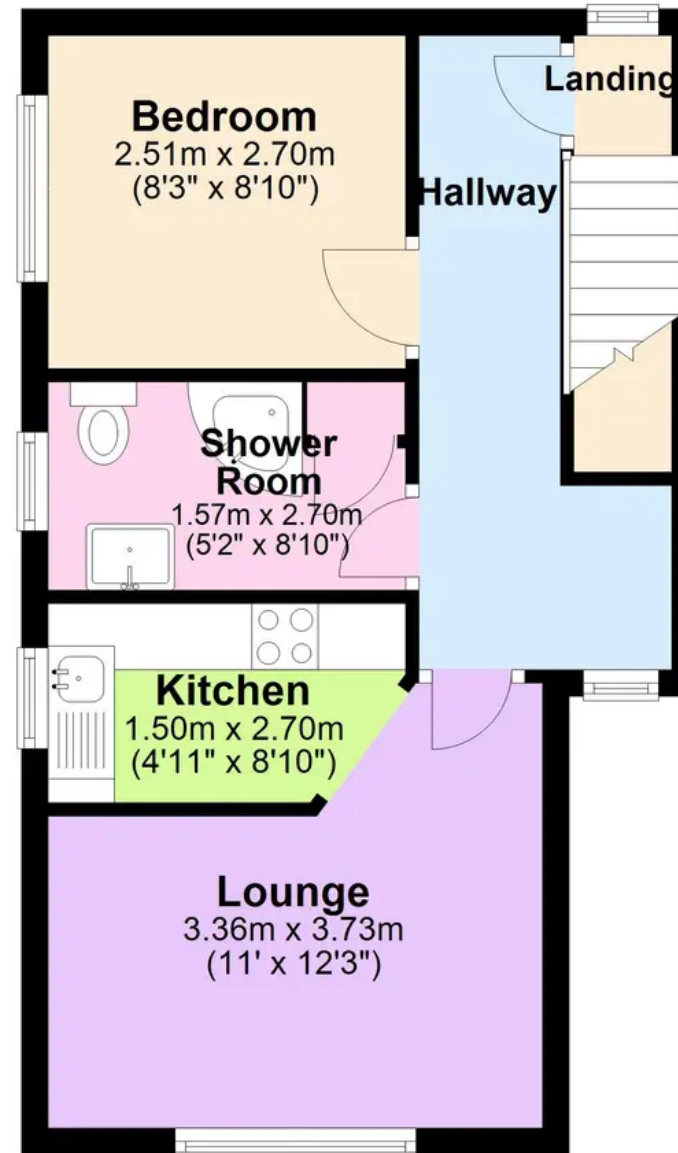
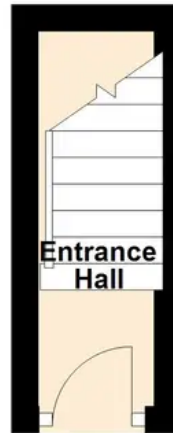


## First Floor

Approx. 35.4 sq. metres (380.8 sq. feet)

## Flat Entrance

Approx. 2.5 sq. metres (26.6 sq. feet)



Total area: approx. 37.9 sq. metres (407.5 sq. feet)

Approx  
Plan produced using PlanUp.

