



Buckland Barton House, Newton Abbot

Newton Abbot

£185,000

ABSOLUTE



Buckland Barton House

Newton Abbot

A great opportunity to acquire this idyllic grade II listed one bedroom apartment, located in a peaceful setting with countryside views and only a couple miles away from the market town of Newton Abbot for all your local amenities. It is a must see property.

Council Tax band: A

Tenure: Leasehold

EPC Energy Efficiency Rating: F

EPC Environmental Impact Rating: F

- Grade 2 listed one bedroom apartment
- Semi rural setting with Newton Abbot 2 miles away
- Generous size living/dining room
- fitted kitchen
- Double bedroom with countryside views
- Bathroom/WC
- Private drainage
- Private allocated parking space
- Shared communal gardens

Term: 199 years from 1 September 1988

Ground Rent : £25 rising to £100

Maintenance as and when and split.



Buckland Barton House

Newton Abbot

The property is situated between Newton Abbot and Shaldon and is close to the nearby village of Combeinteignhead which has a church and two popular pubs, Wild Goose Inn and the Coombe Cellars Inn on the estuary. Further afield at Shaldon and across the estuary at Teignmouth, there are beaches and a full range of local amenities, including shops and restaurants and on the Teign Estuary there are many opportunities for sailing and other water sports. In Newton Abbot, which has a full selection of local amenities, there is a racecourse and a mainline railway station connecting you to Exeter, London Paddington and beyond. Within easy reach to the west, is Dartmoor National Park, with its spectacular scenery and providing many and varied opportunities locally for walking, riding and fishing. Also within easy reach to the south is the beautiful South Devon coast with its beaches and estuaries.

Absolute Sales & Lettings

Absolute Sales & Lettings, 27 Hyde Road - TQ4 5BP

01803 890110

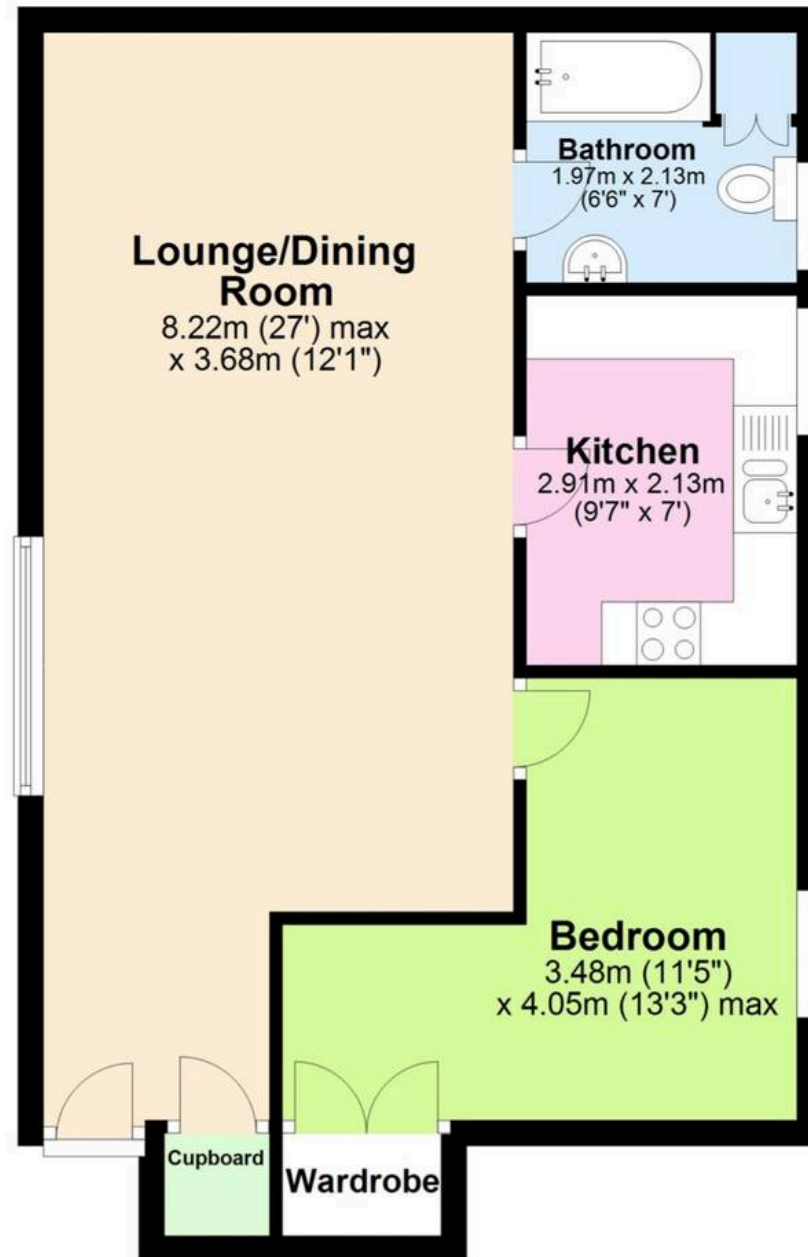
paignton@movewithabsolute.co.uk

<http://www.movewithabsolute.co.uk>



Second Floor

Approx. 51.4 sq. metres (552.8 sq. feet)



Total area: approx. 51.4 sq. metres (552.8 sq. feet)

