



Astoria Court, Belle Vue Road, Paignton

£275,000

Paignton

ABSOLUTE



Astoria Court, Belle Vue Road

Paignton

A newly established select development ideally situated for enjoying the Roundham area of Paignton. The apartment is located on the first floor within the original converted building and retains many character features. NO CHAIN
Council Tax band: TBD

Tenure: Leasehold

- Newly converted luxury apartment within select development
- Two double bedrooms with primary en-suite
- Open plan living/kitchen & second reception room
- Contemporary bathroom/WC
- Private parking
- High specification throughout
- Perfect location for access to amenities on the harbour side
- Built appliances



Astoria Court, Belle Vue Road

Paignton

Astoria Court is located in the highly desirable location of Roundham, noted for its picturesque harbour side, thatched cottages and village ambience. The area offers restaurants, cafes and bars plus access to the South West coast path and blue flag beaches. A haven for those that love to paddle board, sail or enjoy cycling or walking the promenade to Paignton or cliff path to Goodrington.

Absolute Sales & Lettings

Absolute Sales & Lettings, 27 Hyde Road - TQ4 5BP

01803 890110

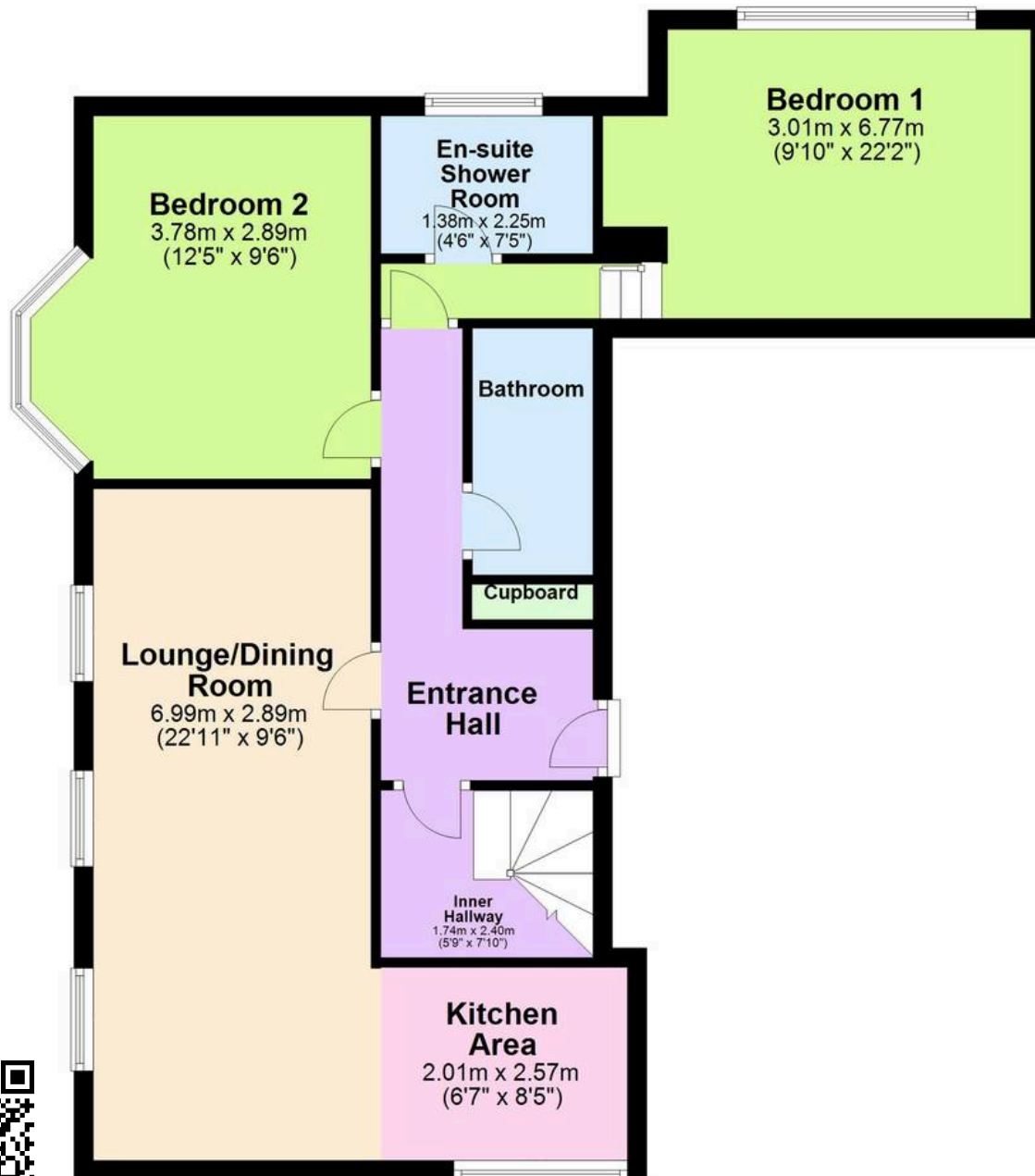
paignton@movewithabsolute.co.uk

<http://www.movewithabsolute.co.uk>



First Floor

Approx. 70.5 sq. metres (758.9 sq. feet)



Top Floor

Approx. 15.9 sq. metres (171.1 sq. feet)

