



Southfield Avenue, Preston

Paignton

Guide Price £490,000

ABSOLUTE



Southfield Avenue

Preston, Paignton

Bespoke detached dormer bungalow in sought-after area. Newly completed loft conversion, spacious family home with 4 beds, 2 receptions, kitchen, conservatory & large rear garden. Ideal for entertaining, garage & driveway. Viewing highly recommended.

Council Tax band: D

Tenure: Freehold

EPC Energy Efficiency Rating: D

EPC Environmental Impact Rating: D

- Detached extended dormer bungalow
- Spacious newly completed loft conversion
- 4 Double bedrooms
- 2 Reception rooms plus a rear conservatory
- 2 Bathrooms
- Utility room
- Stylish vaulted entrance hall with gallery landing and Velux windows
- Large laid to lawn rear garden with a spacious paved terrace
- Garage plus additional driveway parking



Southfield Avenue

Preston, Paignton

The property is situated in the sought after Lower Preston area, close to the parade of shops in Torquay Road to include Sainsburys & Tesco's sub supermarkets. The main number 12 bus service also runs through here with connections to Paignton & Torquay. Paignton's picturesque seafront is just 1/2 to 3/4 of a mile distance. Sought after Oldway Primary School is approximately 1/3 of a mile away. The property also has good access to the A380 ring road leading to Exeter and the M5 beyond.

Absolute Sales & Lettings

Absolute Sales & Lettings, 27 Hyde Road - TQ4 5BP

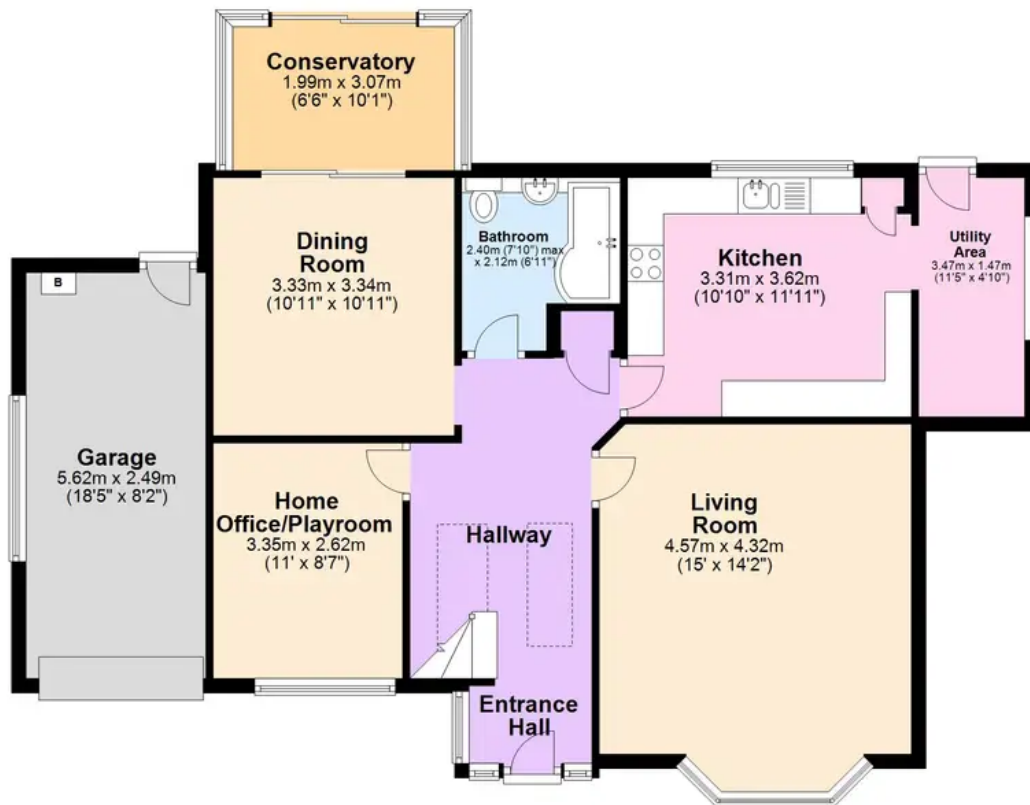
01803 890110

paignton@movewithabsolute.co.uk

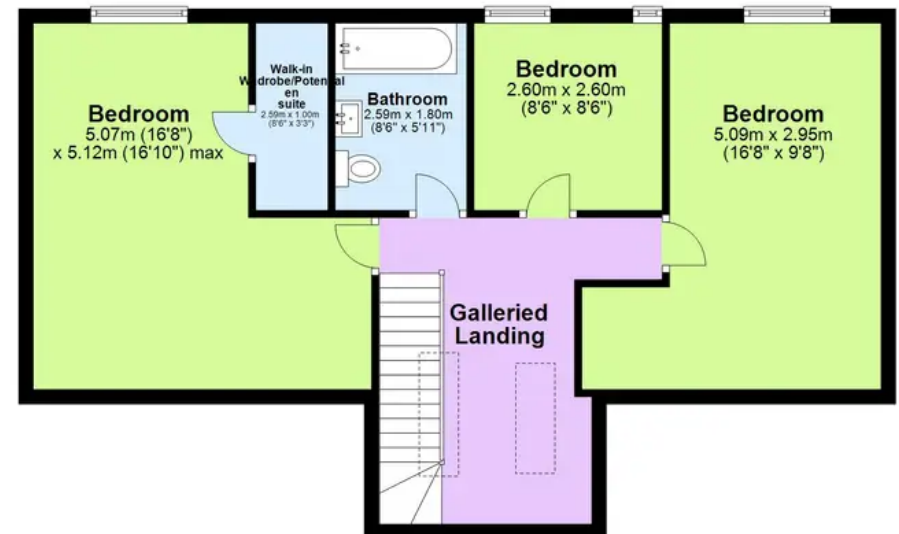
<http://www.movewithabsolute.co.uk>



Ground Floor



First Floor



Total area: approx. 164.6 sq. metres (1772.0 sq. feet)

Approx
Plan produced using PlanUp.