



Astoria Court, Belle Vue Road, Paignton

Paignton

£270,000

ABSOLUTE



# Astoria Court, Belle Vue Road

## Paignton

A newly established select development ideally situated for enjoying the Roundham area of Paignton. Apartment two is located on the first floor within the original converted building and retains many character features. There is a sea view from the living area.

Council Tax band: TBD

Tenure: Leasehold

- Newly converted luxury apartment within select development
- Sea view from living space
- Contemporary fitted Italian designer kitchen
- Contemporary fitted shower room
- High specification throughout
- Allocated parking space
- Perfect location for access to amenities on the harbour side



# Astoria Court, Belle Vue Road

## Paignton

Astoria Court is located in the highly desirable location of Roundham, noted for its picturesque harbour side, thatched cottages and village ambience. The area offers restaurants, cafes and bars plus access to the South West coast path and blue flag beaches. A haven for those that love to paddle board, sail or enjoy cycling or walking the promenade to Paignton or cliff path to Goodrington.

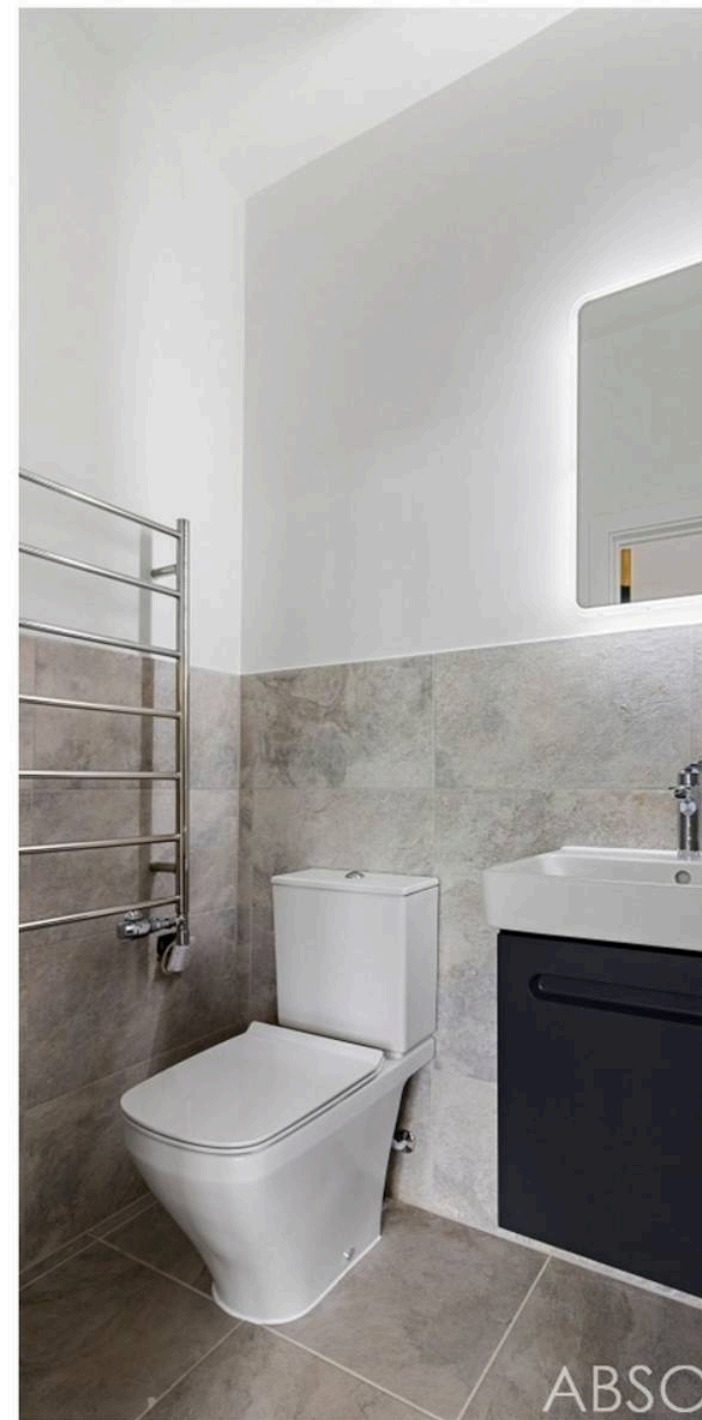
## Absolute Sales & Lettings

Absolute Sales & Lettings, 27 Hyde Road - TQ4 5BP

01803 890110

[paignton@movewithabsolute.co.uk](mailto:paignton@movewithabsolute.co.uk)

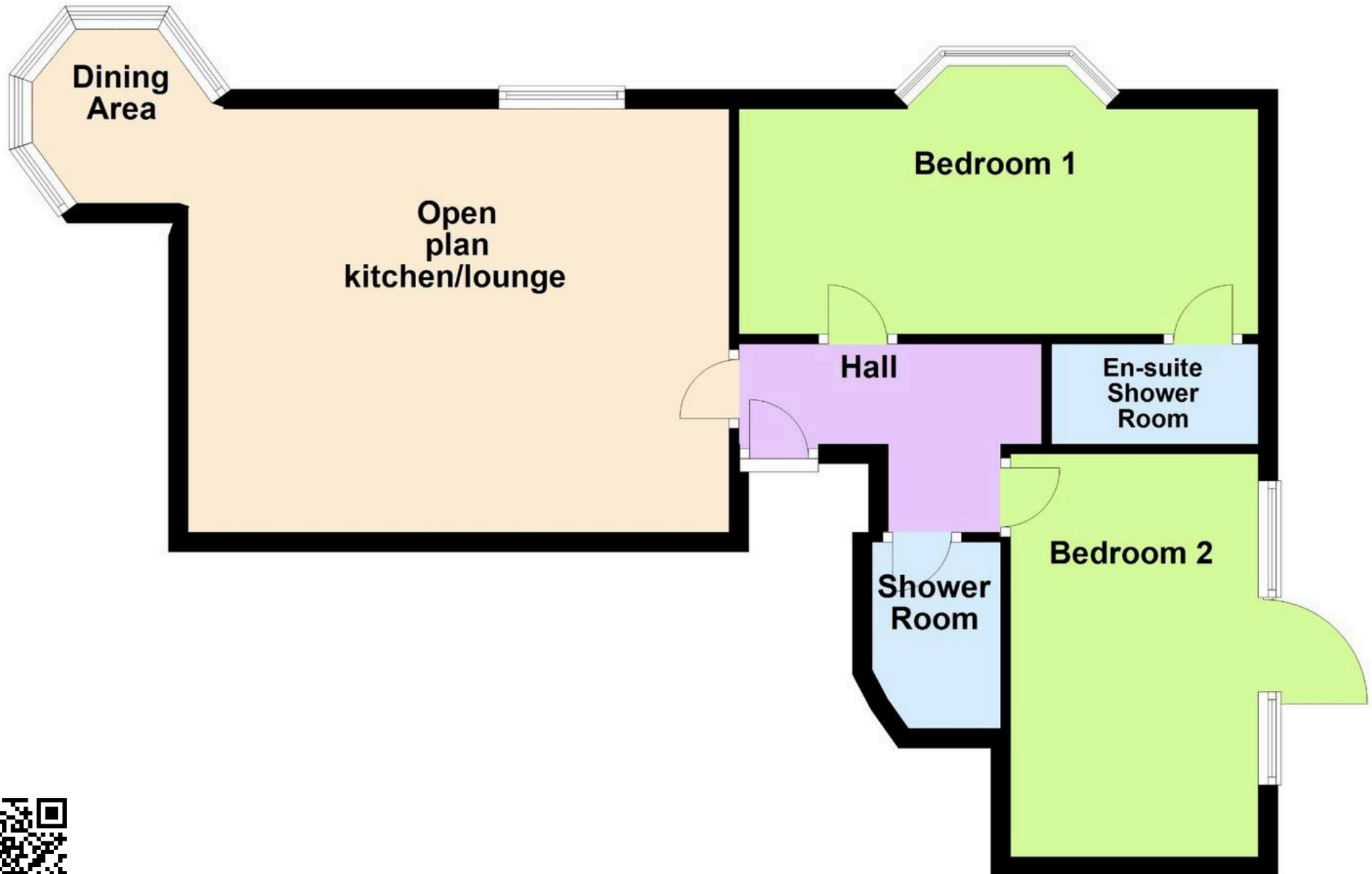
<http://www.movewithabsolute.co.uk>





## Ground Floor

Approx. 59.2 sq. metres (636.8 sq. feet)



Total area: approx. 59.2 sq. metres (636.8 sq. feet)