



Astoria Court, Belle Vue Road, Paignton

Paignton

£235,000

ABSOLUTE



Astoria Court, Belle Vue Road

Paignton

Second floor open plan apartment in Roundham. Brand new development with built-in appliances. Large living area with sea views. Two double bedrooms. No onward chain. Council Tax band: C

Tenure: Leasehold

- Newly converted luxury apartment within select development
- Sea view from living space
- Contemporary fitted Italian designer kitchen
- Bright and airy open plan living space
- Contemporary fitted shower room
- High specification throughout
- Allocated parking space
- Perfect location for access to amenities on the harbourside
- EPC rating - TBC/Council tax - TBC



Astoria Court, Belle Vue Road

Paignton

Astoria Court is located in the highly desirable location of Roundham, noted for its picturesque harbour side, thatched cottages and village ambience. The area offers restaurants, cafes and bars plus access to the South West coast path and blue flag beaches. A haven for those that love to paddle board, sail or enjoy cycling or walking the promenade to Paignton or cliff path to Goodrington.

Absolute Sales & Lettings

Absolute Sales & Lettings, 27 Hyde Road - TQ4 5BP

01803 890110

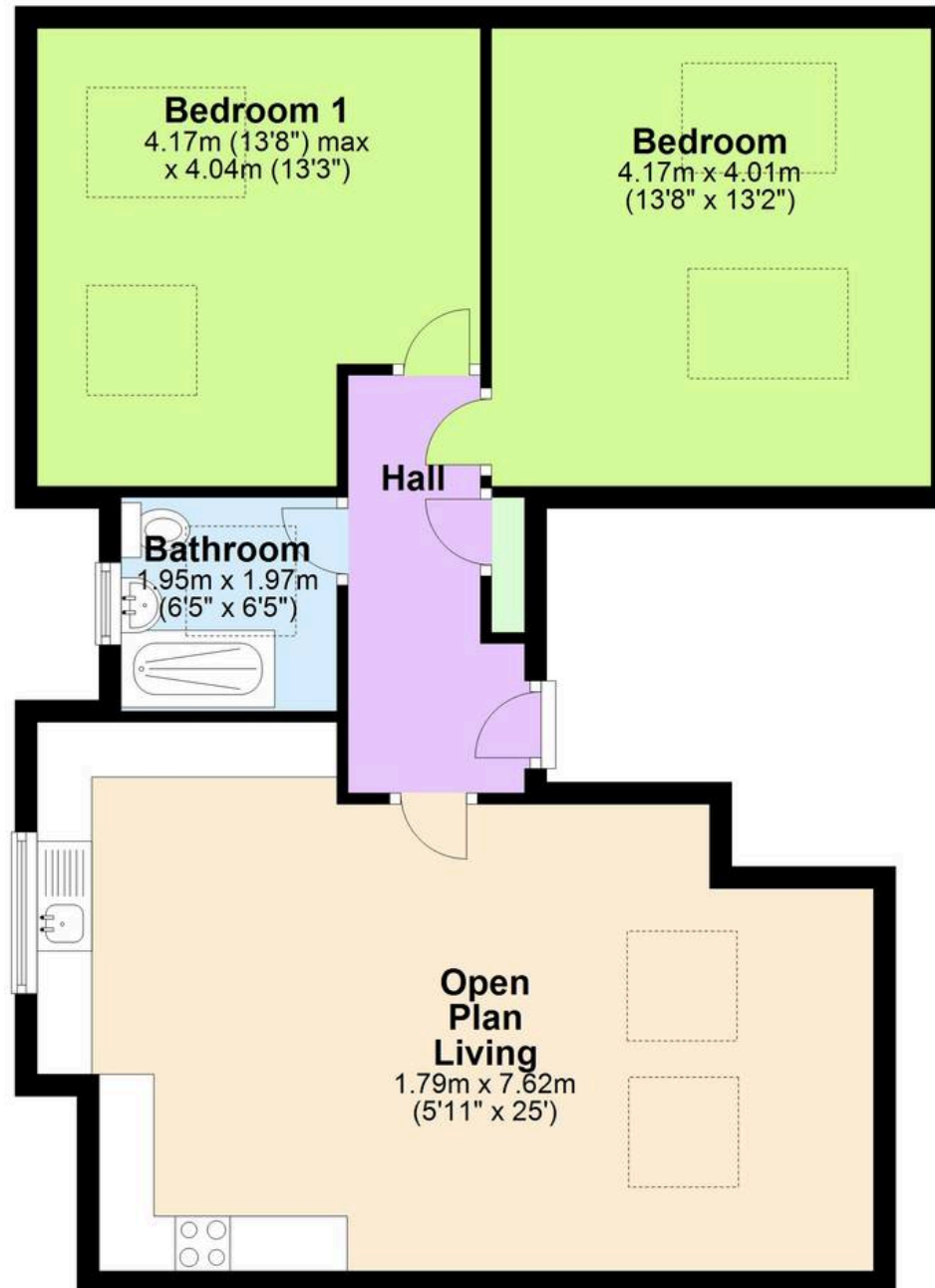
paignton@movewithabsolute.co.uk

<http://www.movewithabsolute.co.uk>



Ground Floor

Approx. 75.5 sq. metres (812.6 sq. feet)



Total area: approx. 75.5 sq. metres (812.6 sq. feet)

