





LIVE AT

TWICKENHAM'S NEW LANDMARK DESTINATION

Twickenham Gateway is the transformational redevelopment of Twickenham Station. A brand new station in the centre of a public plaza with shops including an M&S Food to Go and Sainsbury's Local at ground level with 1, 2 and 3 bedroom apartments above. A fitting new entrance into this world famous south-west London town.

A new destination by:



A partnership between



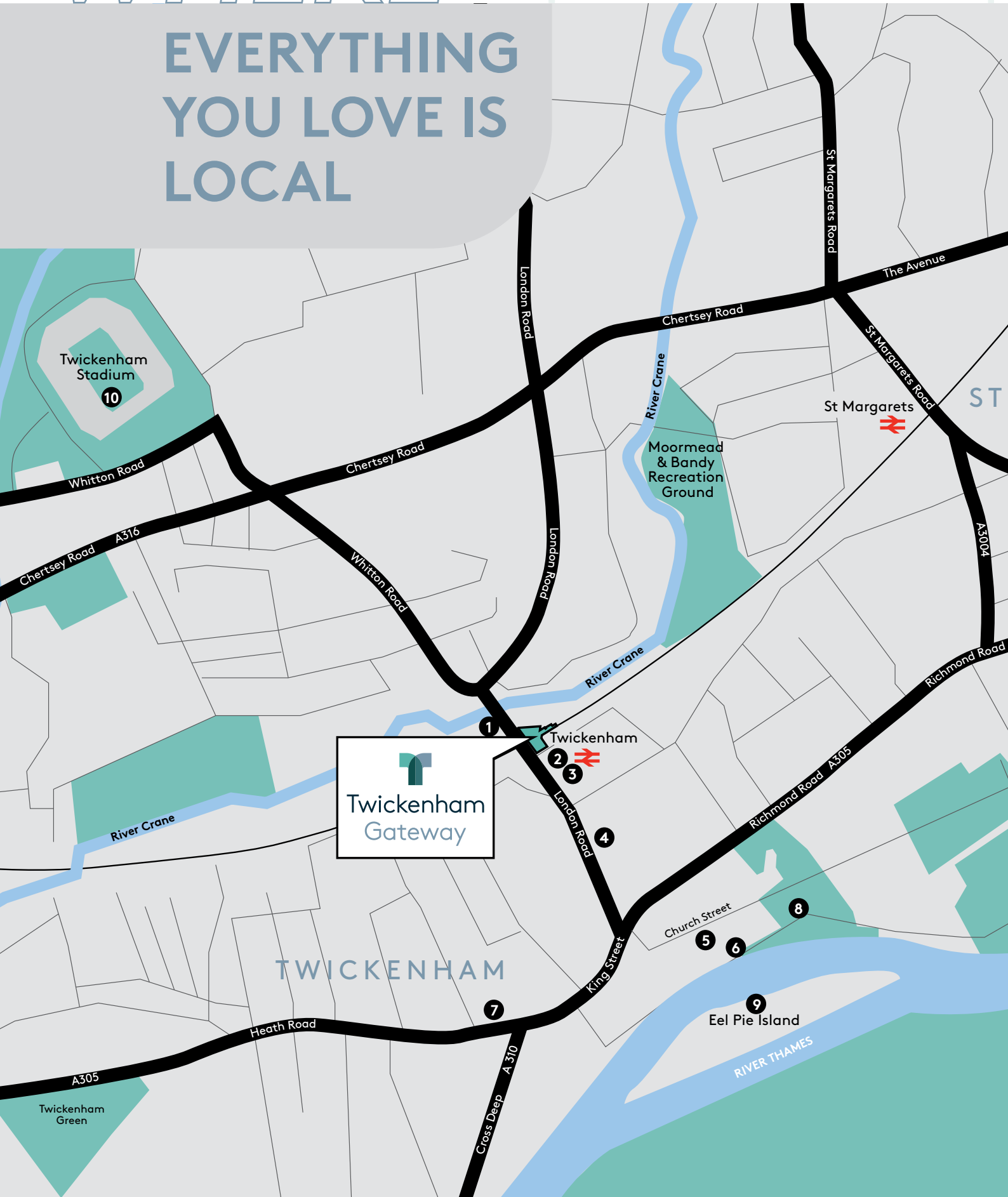
Available with Help to Buy



Backed by
HM Government

WHERE

EVERYTHING
YOU LOVE IS
LOCAL





1 M Bar & Grill
0.03 miles



2 Anytime Fitness
0.1 miles



3 The Shack
0.2 miles



4 Waitrose
0.2 miles



5 Eel Pie Pub
0.4 miles



6 Riverside Pubs



7 Marks & Spencer
0.5 miles



8 York House Gardens
0.6 miles



9 Twickenham Rowing Club
0.6 miles



10 Twickenham Stadium
0.7 miles



11 Marble Hill Park
1.1 miles



12 Gourmet Burger Kitchen
1.6 miles



13 The Ivy Cafe
1.7 miles



14 Petersham Nurseries
2.8 miles

-
- 01. Richmond Park
 - 02. Twickenham Stadium
 - 03. The Riverside at Twickenham

WHERE

WHERE THE GREAT
OUTDOORS IS ON
YOUR DOORSTEP





01

Life in Twickenham is all about the outdoors. Of course, the River Thames is one of the main attractions. From rowing and kayaking on the river to cycling and running alongside it, there are plenty of ways to get active by the water.

There are fantastic parks, recreation grounds, sports facilities and gyms, such as Virgin and Nuffield very close by. As part of Twickenham Gateway, a new riverside footpath is being created as a link to nearby Moormead Park, where you can play football and tennis. It's just a two minute walk. And if all that sounds far too energetic, you can watch others achieve sporting greatness at the world-famous Twickenham Stadium, the home of English rugby and host to other major events.



02



03

WHERE

THERE'S MORE TIME TO ENJOY LIFE

When you're living in the heart of town, you're 'out' as soon as you step out of the front door. Twickenham Gateway is only a few minutes' walk from Twickenham's bars and restaurants and a short train ride to Richmond's nearby night spots.

Shopping is a treat too, with small boutiques, delis and interiors stores lining pedestrianised Church Street. And if you enjoy eating out, you are catered for from dawn till dusk, with cafés serving breakfast, riverside pubs for a long lunch, tea rooms, restaurants and bars to carry on into the night. It's the perfect setting for catching up with friends.

01. **The White Swan**
Riverside,
Twickenham TW1 3DN
02. **Corto Italian Deli**
46 Church Street,
Twickenham TW1 3NR
03. **Church Street**
Twickenham TW1 3NN
04. **Whistles**
19 Hill Street,
Richmond TW9 1SX
05. **Allissias Attic**
42 Church Street,
Twickenham TW1 3NR



WHERE

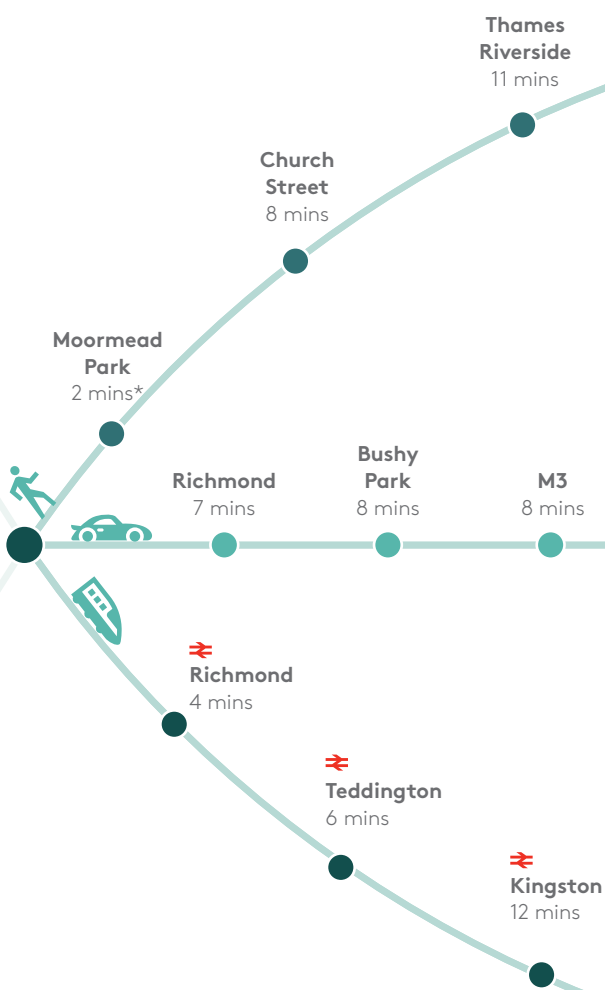
LESS TRAVEL TIME MEETS MORE QUALITY TIME

With Twickenham Station one minute from your front door, the daily commute to central London is a breeze. And there are lots of opportunities for days out at the weekend via Twickenham's well-connected rail service. For a gentler pace, the charms of south-west London are easily explored on foot or by bike from Twickenham Gateway.

Each apartment is sold with the benefit of a Zipcar car club membership. Vehicles will be available to hire from the station car park, giving you maximum flexibility whether it's for a trip to the supermarket or a last minute weekend away.




Twickenham
Gateway



TIMINGS FROM TWICKENHAM STATION



On foot

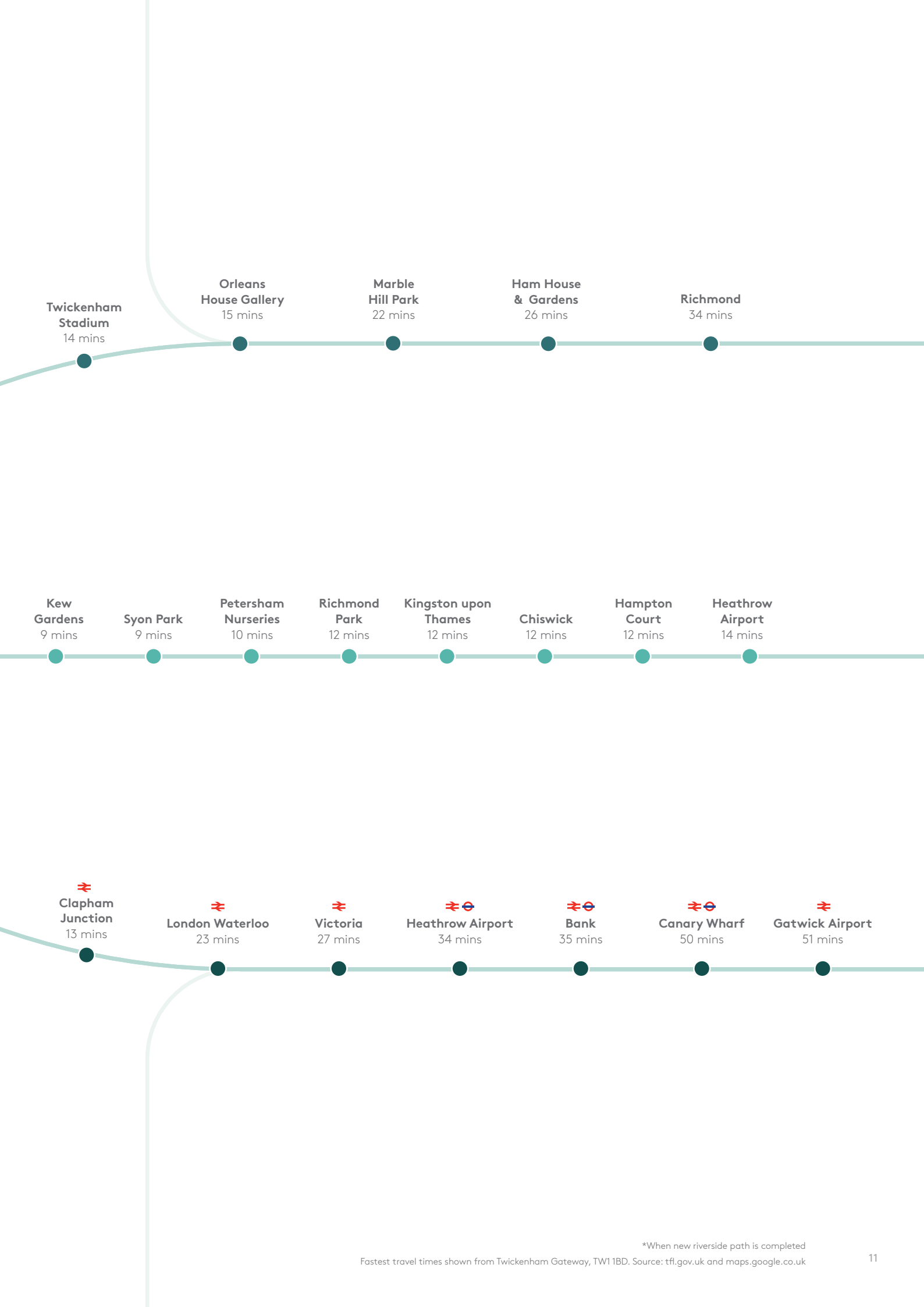


By car



By rail





Twickenham Stadium
14 mins

Orleans House Gallery
15 mins

Marble Hill Park
22 mins

Ham House & Gardens
26 mins

Richmond
34 mins

Kew Gardens
9 mins

Syon Park
9 mins

Petersham Nurseries
10 mins

Richmond Park
12 mins

Kingston upon Thames
12 mins

Chiswick
12 mins



Hampton Court
12 mins

Heathrow Airport
14 mins


Clapham Junction
13 mins



London Waterloo
23 mins


Victoria
27 mins

 
Heathrow Airport
34 mins

 
Bank
35 mins

 
Canary Wharf
50 mins


Gatwick Airport
51 mins

WHERE

YOU WILL FIND
NEW PLACES
TO EXPLORE



There's so much to do in Twickenham and the surrounding area. With some beautiful places to visit right on your doorstep, you'll never tire of living in this beautiful part of the world.

Eel Pie Island

0.5 miles

Twickenham, TW1 3DY

A 3.6 ha island on the Thames that was once a gig spot for The Rolling Stones. It has 26 artists' studios on it, and can be reached by a cute footbridge that arches over the Thames or by boat. While it is private property, twice a year the islanders invite the public in for its Open Studios event.

eelpieislandartists.co.uk

Petersham Nurseries

2.3 miles

Church Lane, Off Petersham Road, Richmond, Surrey, TW10 7AB

The internationally renowned garden centre and restaurant Petersham Nurseries is a tranquil oasis away from the bustle of London. Here you can sample seasonal food and homemade cakes in the tea house, dine in the glasshouse restaurant, browse plants in the nursery and buy antiques and gifts in their shop.

petershamnurseries.com

Richmond Park

5.3 miles

Richmond, TW10 5HS

Created as a Deer Park by Charles I in the 17th century, Richmond Park is the largest Royal Park in London - almost 2,500 acres of hills and grassland. Home to around 650 free roaming red and fallow deer, it's the perfect place to walk, jog or cycle. And if you prefer a more leisurely pace, you can admire the exotic plants in the ornamental woodland garden of Isabella Plantation or take in the views of the Thames Valley from Pembroke Lodge, the highest point in Richmond Park.

royalpark.org.uk/parks/Richmond-park

Twickenham Stadium

0.6 miles

200 Whitton Road, Twickenham, TW2 7BA

The home of Rugby Union, Twickenham Stadium is a magnet for rugby fans all over the world. The tour and museum is a must for anyone who enjoys the sport! The stadium also plays hosts a range of live music concerts throughout the year.

twickenhamstadium.com

Hampton Court Palace

4.6 miles

Hampton Court Way, East Molesey, KT8 9AU

Hampton Court Palace was built in 1514 originally as a home for Cardinal Wolsey, the advisor to Henry VIII, although its most famous resident was Henry VIII himself. Explore the palace and its exciting features, such as the famous maze - the oldest surviving hedge maze in the UK.

hrp.org.uk/hampton-court-palace

Kew Gardens

3 miles

Richmond, Surrey, TW9 3AE

With over 50,000 living plants to be found across this UNESCO World Heritage site, Kew Gardens is undoubtedly one of London's best attractions. From Victorian glasshouses to an Alpine rock garden, there's something to see in every corner. Just down the road from Twickenham, it's worth becoming a member of the gardens to enjoy unlimited entrance all year round!

kew.org

Marble Hill House

1.1 miles

Richmond Road, Twickenham, London, TW1 2NL

This stunning Palladian Villa is literally on your doorstep. Set in 66 acres of spectacular parkland on the riverside, Marble Hill was built for Henrietta Howard, King George II's lover when he was Prince of Wales. Intended as an Arcadian retreat from crowded 18th-century London, its grand interiors include a fine collection of early Georgian paintings.

english-heritage.org.uk/visit/places/marble-hill-house

Strawberry Hill House

0.9 miles

268 Waldegrave Road, Twickenham, TW1 4ST

Strawberry Hill House is no ordinary stately home. Hailed as Britain's finest example of Georgian Gothic Revival architecture, you can take a tour of Horace Walpole's 18th century house and gardens - or visit one of the many events hosted at the house every year.

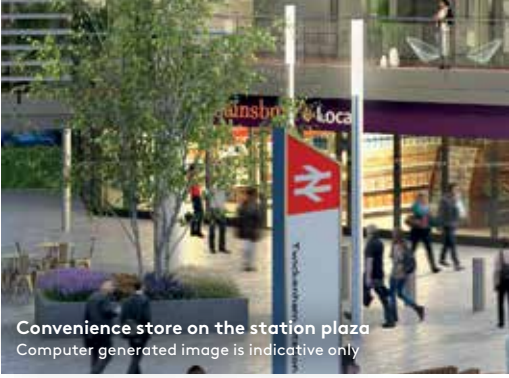
strawberryhillhouse.org.uk



View of Signal House, Faregate House and future phase, Bradshaw Gardens.



Stock images cost: £47.99 +VAT



Convenience store on the station plaza
Computer generated image is indicative only



Convenience store on the station plaza



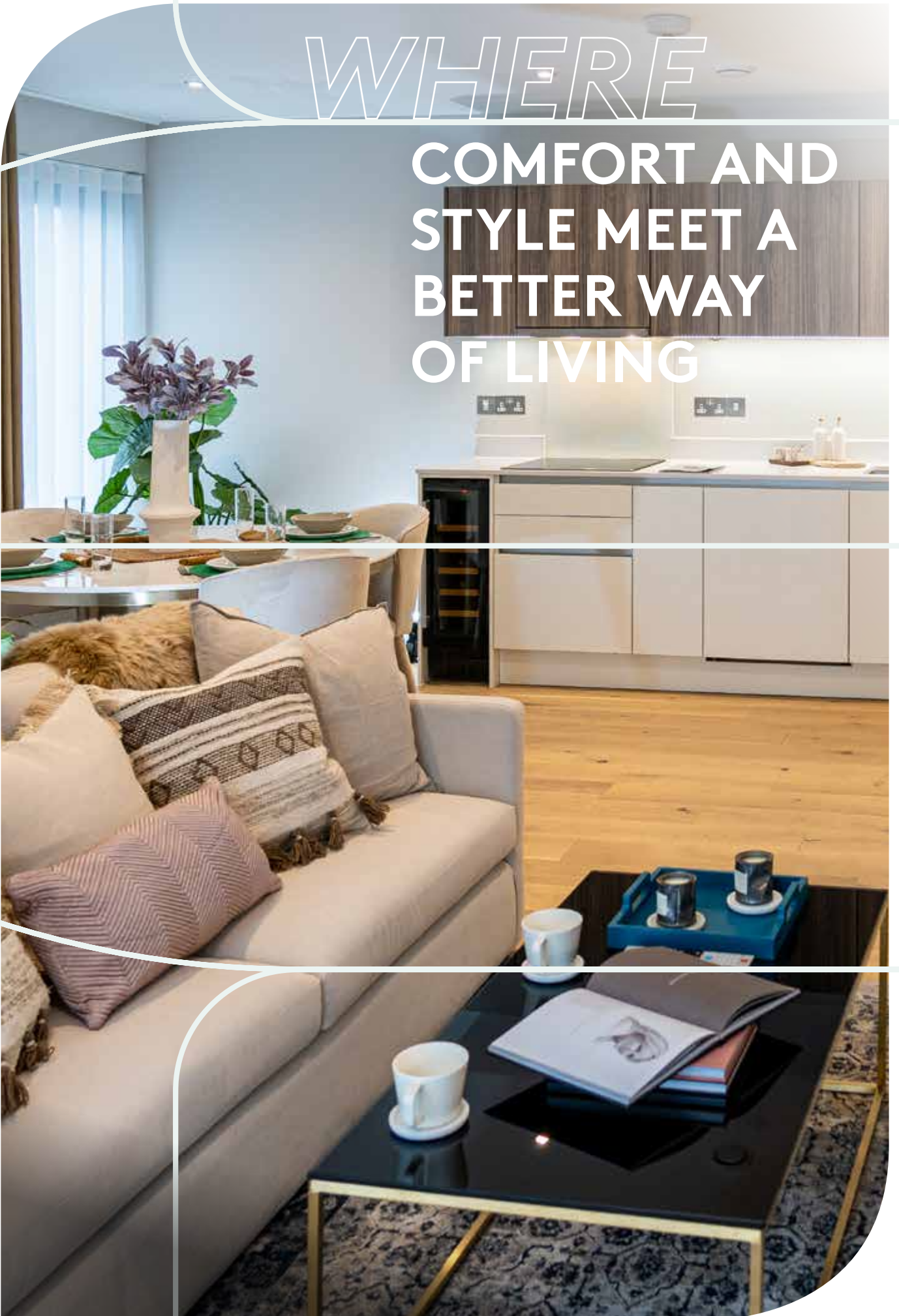
Twickenham Gateway is a new way of living, combining spacious, well-designed apartments with the ultimate in convenience to give you more time to enjoy life.

Landscaping, green roofs and a new public plaza complement the contemporary buildings. The development has its own shops, including an M&S Food to Go and Sainsbury's Local. With cycle spaces for every apartment, the new riverside walkway also features a children's play space.



WHERE

COMFORT AND STYLE MEET A BETTER WAY OF LIVING



WHERE

COMFORT AND
QUALITY ARE
OUR FOCUS



Every apartment has been carefully designed to provide a comfortable yet stylish lifestyle.

From contemporary Leicht German kitchens, with high specification integrated appliances, to beautiful engineered timber flooring in the living room, kitchen and hallways.

Step out of bed onto luxurious fitted carpets in the bedrooms. And we have maximised your storage space, with fitted mirrored built in wardrobes in all bedrooms. The home comforts doesn't stop here, with contemporary Porcelanosa bathrooms and en suites, with large format ceramic tiling, and Demister mirror cabinets with shaver sockets as well as a chrome heated towel rail.

Your security is paramount, with CCTV to entrance lobby, smart video entry system, external lighting to entrance and a key fob accessed entrance lobby.



SPECIFICATION

Balancing all the essential ingredients for a modern way of life.



Kitchen

Contemporary designed Leicht German kitchens

Silestone worktops and 100mm upstand with glass splashback to hob

Integrated dishwasher and fridge freezer

Integrated electric oven, extractor hood and touch slider control induction hob

Integrated combination microwave oven

Integrated wine cooler

Brushed steel switch plates at worktop level

One and a half bowl stainless steel undermounted sink and chrome mixer tap

Under unit LED lighting

Freestanding washer dryer in services cupboard or within kitchen*

Bathroom & En Suite

Contemporary designed Porcelanosa bathrooms and en suites**

Large format ceramic tiling to walls and floors

Designer taps, fixed shower head and hand-held shower head with thermostatic mixer

Concealed dual-flush WC and cistern with soft close seat and cover

Worktop mounted basin

Glass shower screens to baths

Chrome heated towel rail

Illuminated demister mirror cabinet to bathrooms and en suites** with shaver socket

Extractor ventilation fitted to all bathrooms and en suites**

Ironmongery

Satin finish lever handles

Electrics, Lighting & Heating

White LED downlighters throughout

TV aerial points to living and bedrooms

Fibre optic broadband to the apartment

Wiring for Sky in living and master bedroom†

Energy efficient communal heating system

Hot water tank and radiators within apartments

Mains powered smoke detectors

Mechanical ventilation with heat recovery system

Brushed steel light fitting to balcony



Joinery

White finished internal doors

Wenge timber front doors with multipoint lock and spyhole

White painted skirtings and architraves

Mirrored wardrobes to all bedrooms***

Security

Key fob accessed entrance lobby

CCTV to entrance lobby

Secure bicycle storage

Smart video entry system

External lighting to entrance

Floor & Wall Finishes

Engineered timber flooring to living/dining/kitchen and hallway

Fitted carpet to bedrooms

Matt emulsion paint finish to walls and ceilings

External Features

Double glazed windows with aluminium frames

Brushed steel and glass balcony balustrades

Decking to balconies and paving to terraces

Privacy screens to selected apartments

Communal Areas

Lifts and stairs to all floors

Fitted carpet to communal hallways and lift lobbies

Apartment post boxes in entrance lobby

White emulsion to walls and ceilings

White painted skirtings and architraves

Building Standards

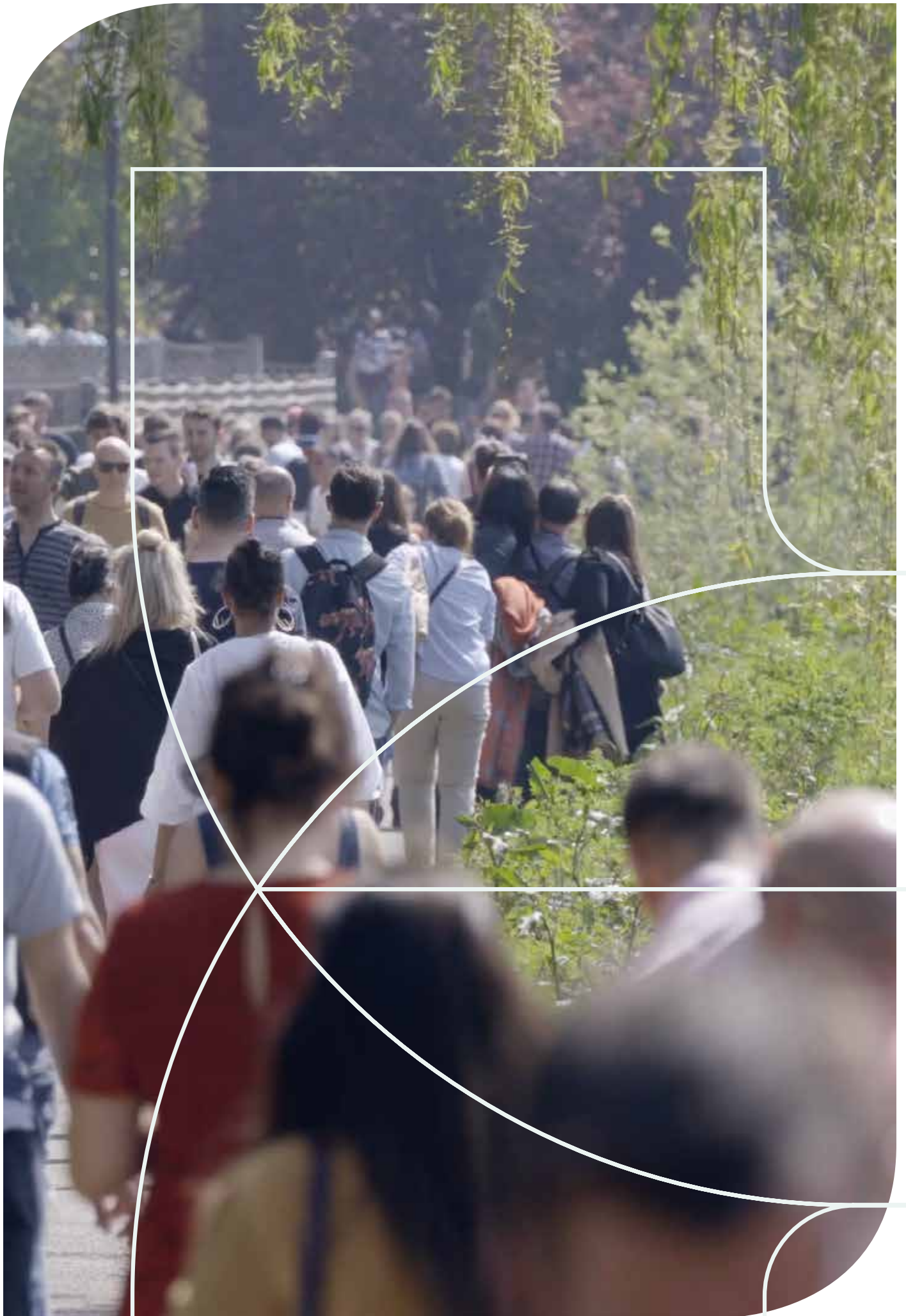
NHBC 10 Year Buildmark Warranty

* Location dependent on apartment design

** En suites to selected apartments.

*** No wardrobe to bedroom 2 in plot 35
Please ask sales consultant for details

† Buyer subscription required
Specification liable to variation and forms
no part of any contract



SIGNAL HOUSE

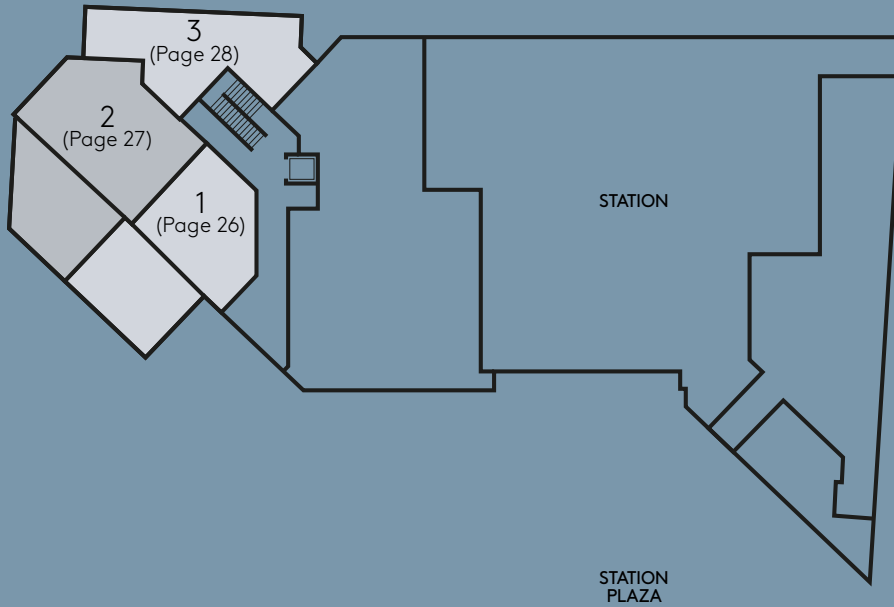


Signal House includes 18 apartments, many overlooking the new station plaza. A mix of 1, 2 and 3 bedroom apartments close to the new riverside walkway and shops, including a Sainsburys Local and M&S Food to Go.

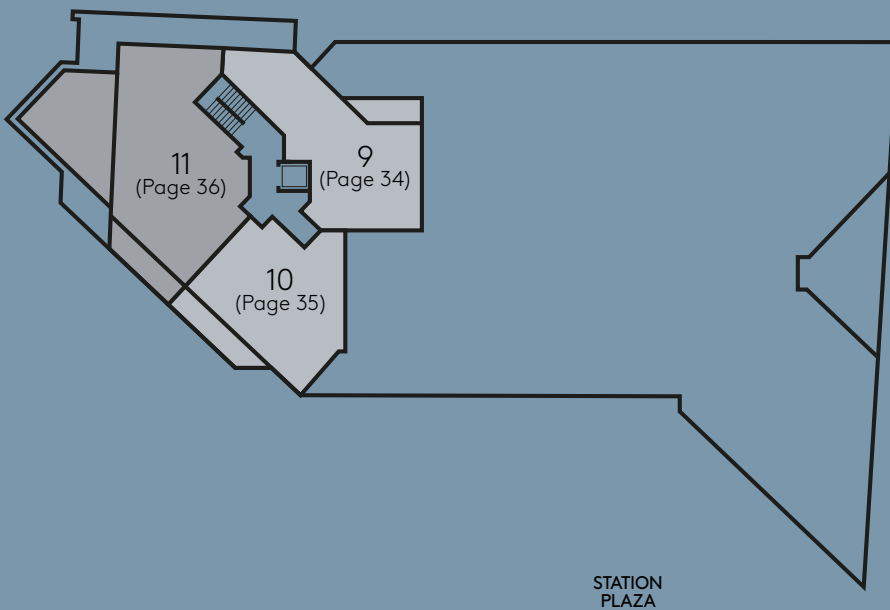
APARTMENT LOCATORS

SIGNAL HOUSE

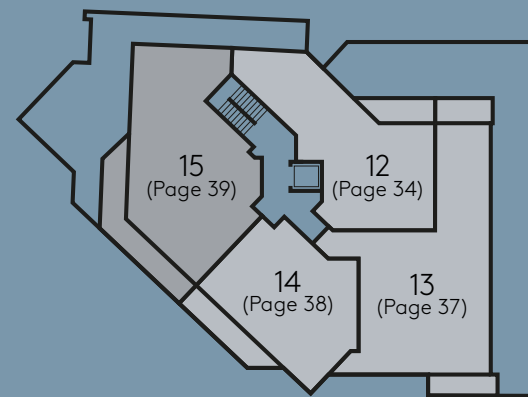
Ground Floor



Second Floor



Third Floor

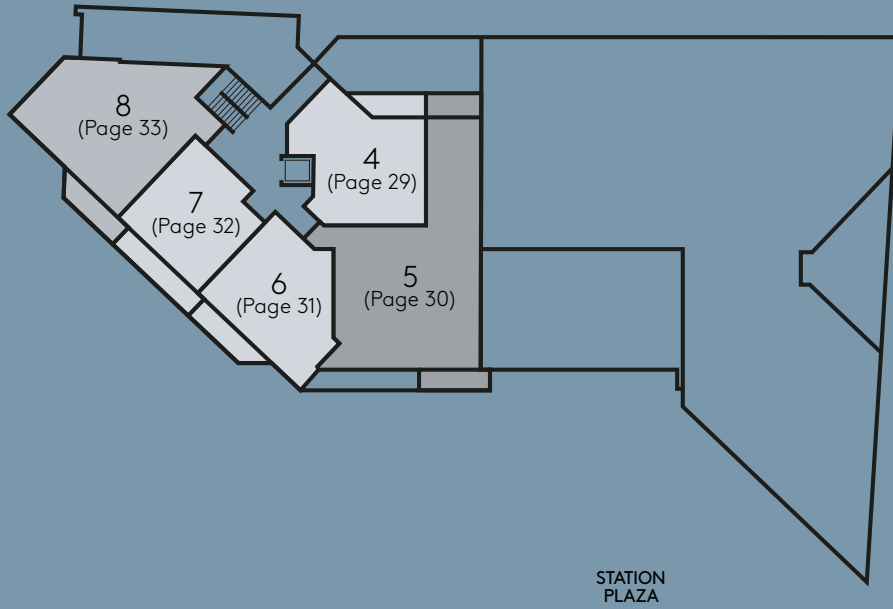


Key

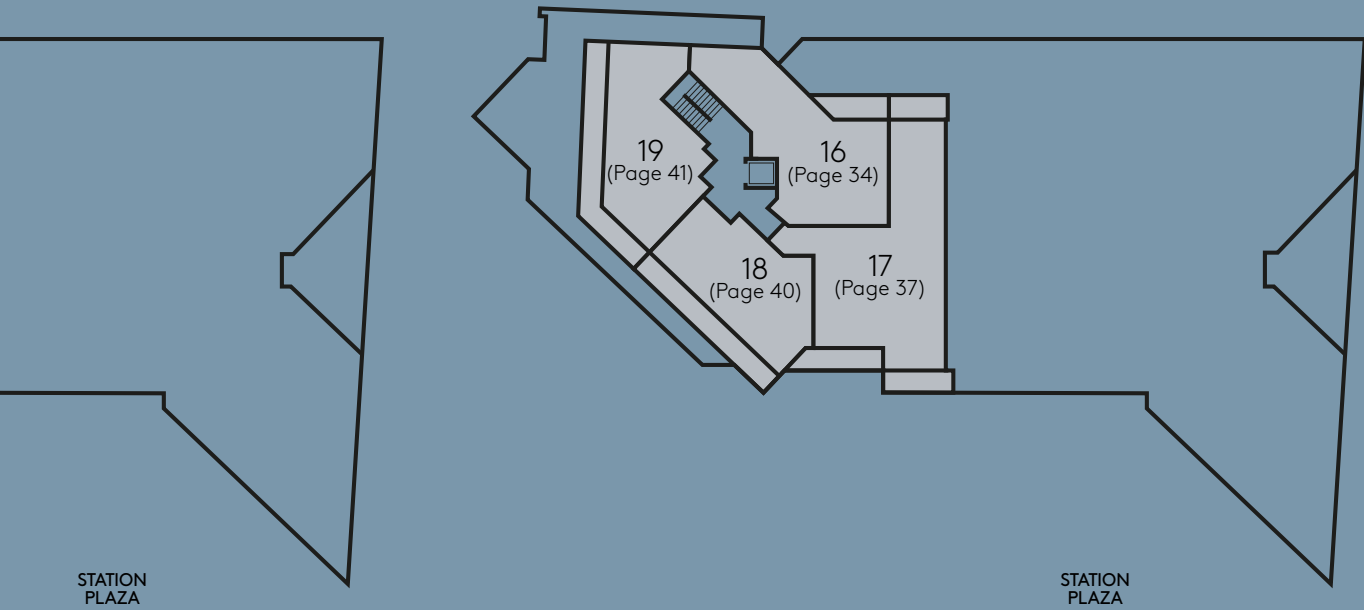
- 1 Bedroom
- 2 Bedroom
- 3 Bedroom



First Floor



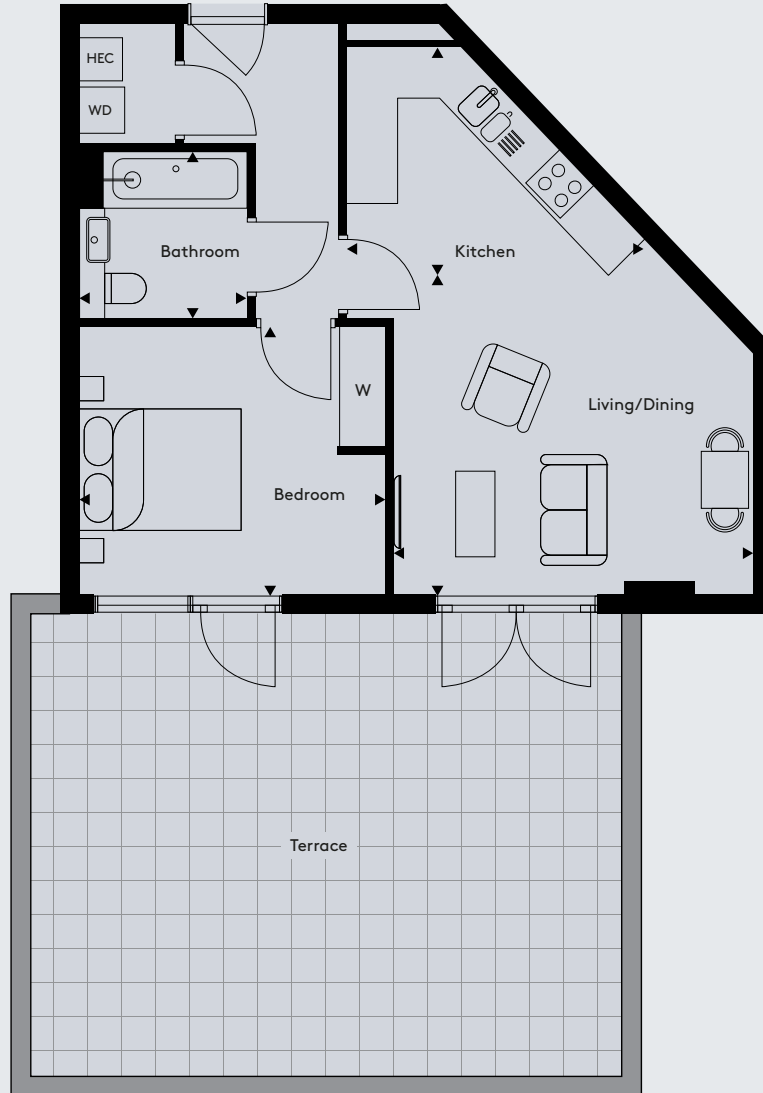
Fourth Floor



Apartment 1

1 bedroom apartment

Building	Signal House
Floor	G
Apt No	1

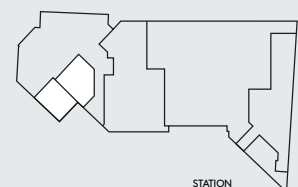


Total Internal Area	559.5 sq ft	52.0 sq m
Living/Dining	14' 10" x 13' 1"	4520mm x 4000mm
Kitchen	9' 5" x 12' 4"	2865mm x 3750mm
Bedroom	12' 7" x 11' 0"	3840mm x 3355mm
Terrace	447.6 sq ft	41.6 sq m



Key

WD	Washer Dryer	HEC	Heating and Electrical Components
W	Fitted Wardrobe	C	Cupboard

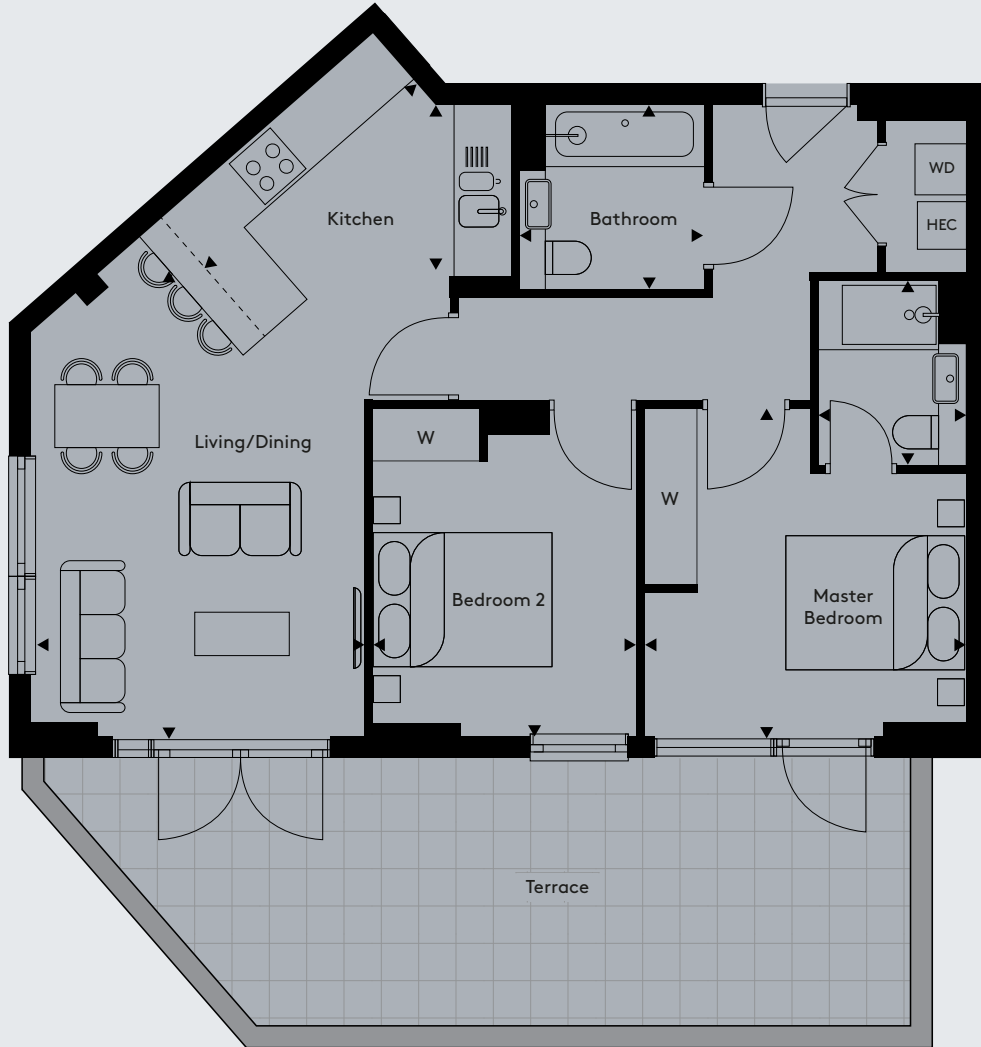


Floorplans not to scale. The room sizes shown are taken from the dimension arrows on the floorplans which represent the maximum dimensions, a tolerance of +/- 5% is allowed. External finishes on certain designs, layouts, window positions and styles may vary, please check with the sales consultant. These floor plans are a guide only and may be subject to change. Area measurements are given as Gross Internal Area (GIA).

Apartment 2

2 bedroom apartment

Building	Signal House
Floor	G
Apt No	2

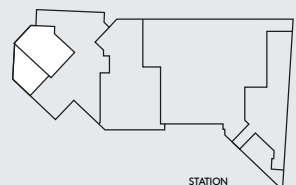


Total Internal Area	770.4 sq ft	71.6 sq m
Living/Dining	12' 3" x 17' 5"	3730mm x 5300mm
Kitchen	10' 7" x 6' 1"	3220mm x 1860mm
Master Bedroom	12' 0" x 12' 3"	3645mm x 3725mm
Bedroom 2	9' 10" x 11' 4"	2990mm x 3445mm
Terrace	258.2 sq ft	25.0 sq m



Key

- WD Washer Dryer
- HEC Heating and Electrical Components
- W Fitted Wardrobe
- C Cupboard

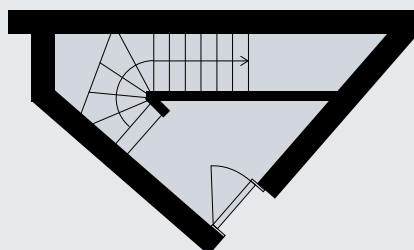
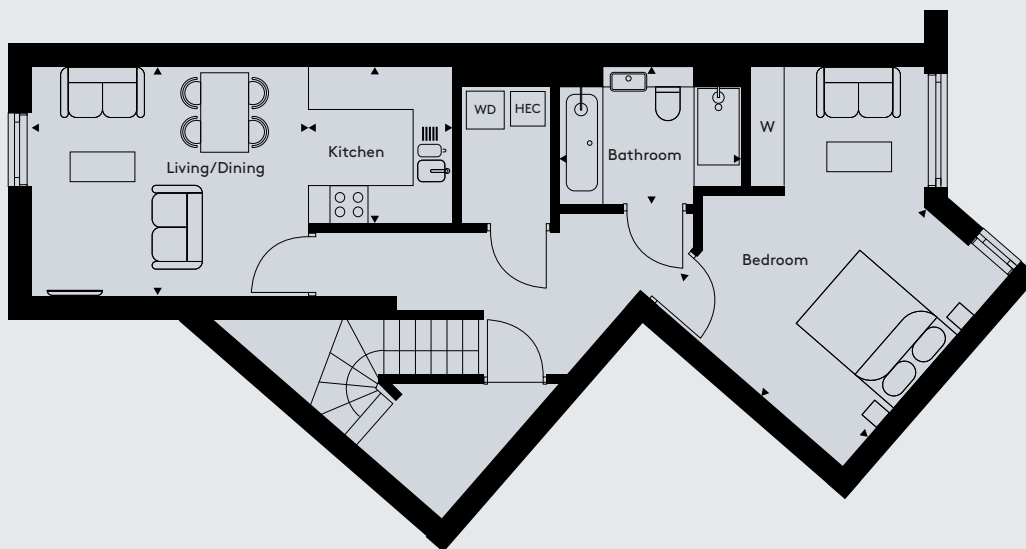


Floorplans not to scale. The room sizes shown are taken from the dimension arrows on the floorplans which represent the maximum dimensions, a tolerance of +/- 5% is allowed. External finishes on certain designs, layouts, window positions and styles may vary, please check with the sales consultant. These floor plans are a guide only and may be subject to change. Area measurements are given as Gross Internal Area (GIA).

Apartment 3

1 bedroom apartment

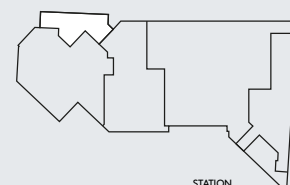
Building	Signal House
Floor	G
Apt No	3



Total Internal Area	786.6 sq ft	73.1 sq m
Living/Dining	14' 1" x 11' 8"	4300mm x 3560mm
Kitchen	7' 7" x 7' 11"	2300mm x 2410mm
Bedroom	13' 3" x 12' 9"	4030mm x 3875mm

Key

WD	Washer Dryer	HEC	Heating and Electrical Components
W	Fitted Wardrobe	C	Cupboard



STATION PLAZA

Floorplans not to scale. The room sizes shown are taken from the dimension arrows on the floorplans which represent the maximum dimensions, a tolerance of +/- 5% is allowed. External finishes on certain designs, layouts, window positions and styles may vary, please check with the sales consultant. These floor plans are a guide only and may be subject to change. Area measurements are given as Gross Internal Area (GIA).

Apartment 4

1 bedroom apartment

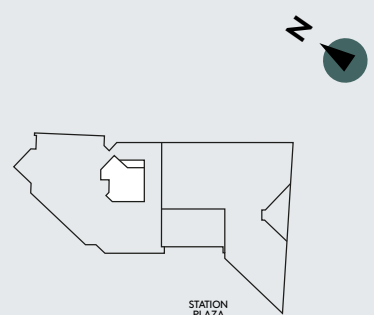
Building	Signal House
Floor	1
Apt No	4



Total Internal Area	669.3 sq ft	62.2 sq m
Living/Dining	14' 6" x 18' 11"	4425mm x 5760mm
Kitchen	8' 5" x 10' 0"	2560mm x 3050mm
Bedroom	12' 11" x 14' 2"	3925mm x 4310mm

Key

WD	Washer Dryer	HEC	Heating and Electrical Components
W	Fitted Wardrobe	C	Cupboard

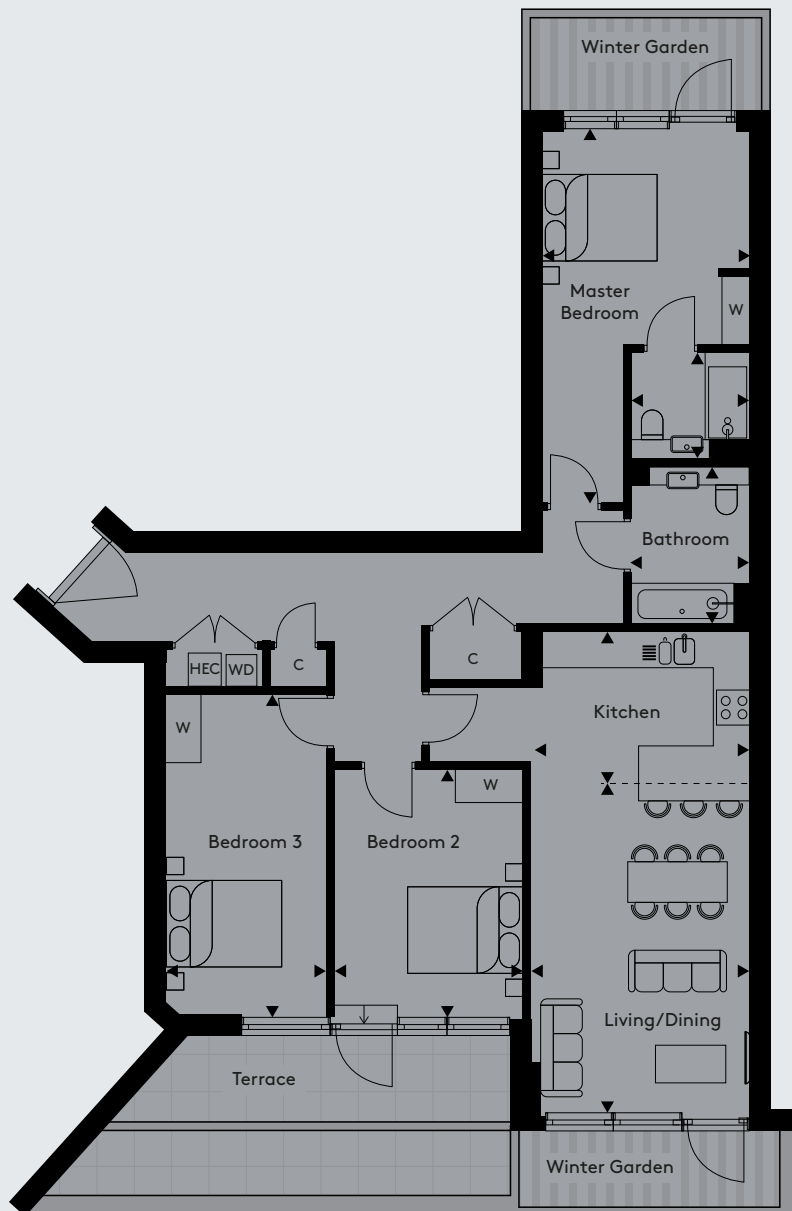


Floorplans not to scale. The room sizes shown are taken from the dimension arrows on the floorplans which represent the maximum dimensions, a tolerance of +/- 5% is allowed. External finishes on certain designs, layouts, window positions and styles may vary, please check with the sales consultant. These floor plans are a guide only and may be subject to change. Area measurements are given as Gross Internal Area (GIA).

Apartment 5

3 bedroom apartment

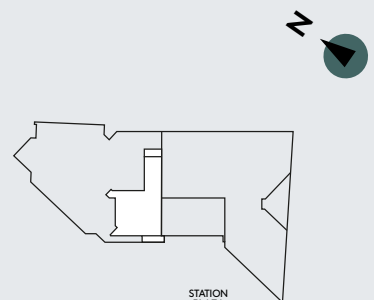
Building	Signal House
Floor	1
Apt No	5



Total Internal Area	1226.6 sq ft	114.0 sq m
Living/Dining	12' 10" x 18' 8"	3905mm x 5690mm
Kitchen	11' 9" x 8' 6"	3590mm x 2600mm
Master Bedroom	11' 11" x 20' 10"	3635mm x 6360mm
Bedroom 2	9' 0" x 18' 2"	2750mm x 5530mm
Bedroom 3	10' 10" x 13' 11"	3290mm x 4250mm
Winter Garden	53.8 sq ft	5.0 sq m
Balcony	60.3 sq ft	5.6 sq m
Terrace	106.5 sq ft	9.9 sq m

Key

WD	Washer Dryer	HEC	Heating and Electrical Components
W	Fitted Wardrobe	C	Cupboard

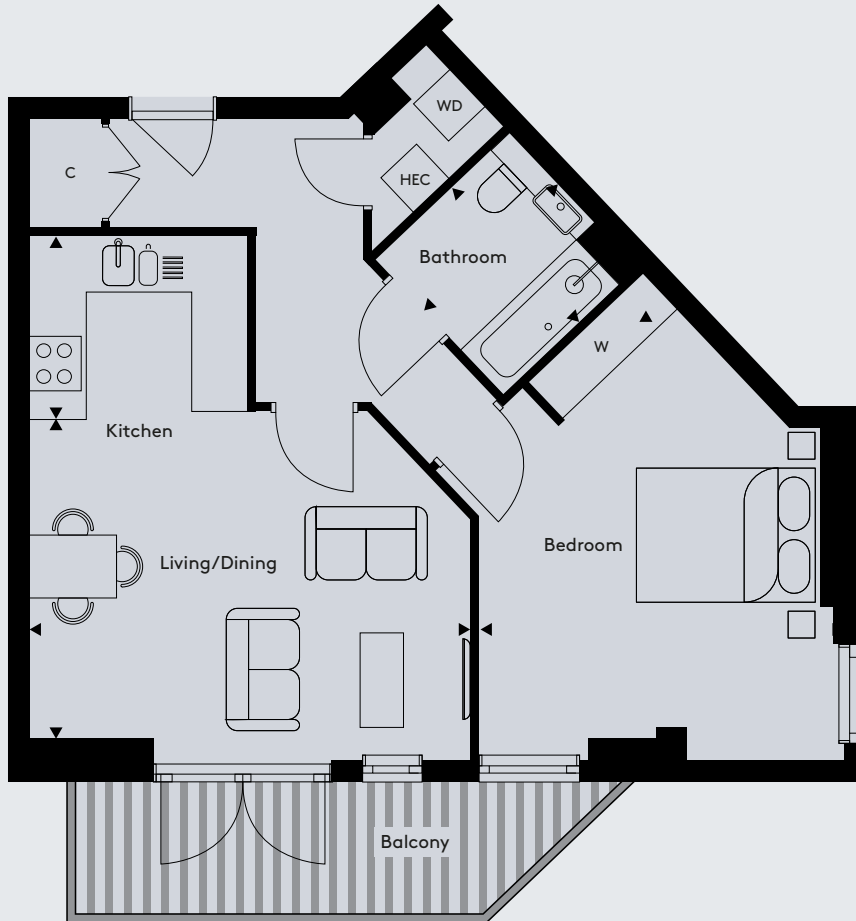


Floorplans not to scale. The room sizes shown are taken from the dimension arrows on the floorplans which represent the maximum dimensions, a tolerance of +/- 5% is allowed. External finishes on certain designs, layouts, window positions and styles may vary, please check with the sales consultant. These floor plans are a guide only and may be subject to change. Area measurements are given as Gross Internal Area (GIA).

Apartment 6

1 bedroom apartment

Building	Signal House
Floor	1
Apt No	6

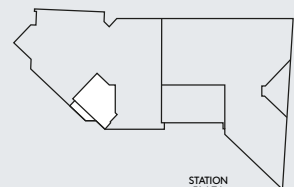


Total Internal Area	620.9 sq ft	57.7 sq m
Living/Dining	12' 4" x 16' 5"	3770mm x 5015mm
Kitchen	6' 10" x 8' 1"	2090mm x 2470mm
Bedroom	12' 8" x 15' 11"	3870mm x 4850mm
Balcony	92.5 sq ft	8.6 sq m



Key

WD	Washer Dryer	HEC	Heating and Electrical Components
W	Fitted Wardrobe	C	Cupboard

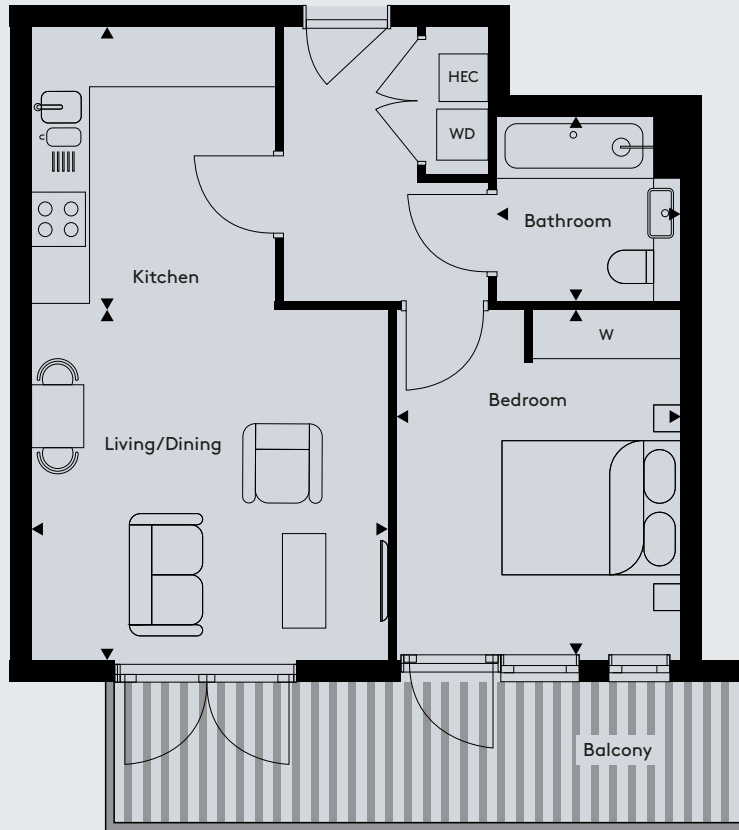


Floorplans not to scale. The room sizes shown are taken from the dimension arrows on the floorplans which represent the maximum dimensions, a tolerance of +/- 5% is allowed. External finishes on certain designs, layouts, window positions and styles may vary, please check with the sales consultant. These floor plans are a guide only and may be subject to change. Area measurements are given as Gross Internal Area (GIA).

Apartment 7

1 bedroom apartment

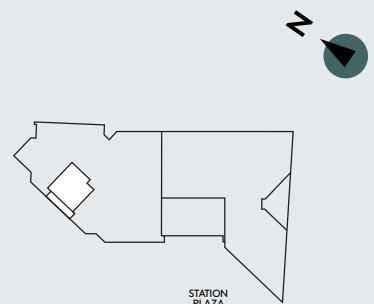
Building	Signal House
Floor	1
Apt No	7



Total Internal Area	544.5 sq ft	50.6 sq m
Living/Dining	12' 6" x 13' 3"	3820mm x 4045mm
Kitchen	10' 7" x 9' 0"	3215mm x 2755mm
Bedroom	13' 0" x 10' 8"	3975mm x 3240mm
Balcony	120.5 sq ft	11.2 sq m

Key

WD	Washer Dryer	HEC	Heating and Electrical Components
W	Fitted Wardrobe	C	Cupboard



Floorplans not to scale. The room sizes shown are taken from the dimension arrows on the floorplans which represent the maximum dimensions, a tolerance of +/- 5% is allowed. External finishes on certain designs, layouts, window positions and styles may vary, please check with the sales consultant. These floor plans are a guide only and may be subject to change. Area measurements are given as Gross Internal Area (GIA).

Apartment 8

2 bedroom apartment

Building	Signal House
Floor	1
Apt No	8

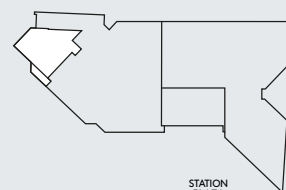


Total Internal Area	893.1 sq ft	83.0 sq m
Living/Dining	13' 5" x 15' 7"	4100mm x 4750mm
Kitchen	6' 11" x 11' 11"	2100mm x 3640mm
Master Bedroom	9' 0" x 11' 11"	2750mm x 3630mm
Bedroom 2	9' 0" x 15' 9"	2750mm x 4805mm
Balcony	89.3 sq ft	8.3 sq m



Key

WD	Washer Dryer	HEC	Heating and Electrical Components
W	Fitted Wardrobe	C	Cupboard



Floorplans not to scale. The room sizes shown are taken from the dimension arrows on the floorplans which represent the maximum dimensions, a tolerance of +/- 5% is allowed. External finishes on certain designs, layouts, window positions and styles may vary, please check with the sales consultant. These floor plans are a guide only and may be subject to change. Area measurements are given as Gross Internal Area (GIA).

Apartments 9, 12, 16

2 bedroom apartment

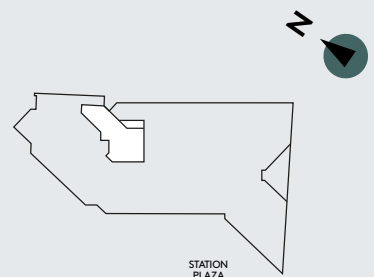
Building	Signal House
Floors	2, 3, 4
Apt No	9, 12, 16



Total Internal Area	897.4 sq ft	83.4 sq m
Living/Dining	15' 8" x 17' 7"	4785mm x 5350mm
Kitchen	7' 3" x 10' 3"	2200mm x 3130mm
Master Bedroom	13' 4" x 17' 1"	4075mm x 5200mm
Bedroom 2	9' 5" x 11' 11"	2880mm x 3635mm
Winter Garden	68.9 sq ft	6.4 sq m

Key

WD	Washer Dryer	HEC	Heating and Electrical Components
W	Fitted Wardrobe	C	Cupboard



Floorplans not to scale. The room sizes shown are taken from the dimension arrows on the floorplans which represent the maximum dimensions, a tolerance of +/- 5% is allowed. External finishes on certain designs, layouts, window positions and styles may vary, please check with the sales consultant. These floor plans are a guide only and may be subject to change. Area measurements are given as Gross Internal Area (GIA).

Apartment 10

2 bedroom apartment

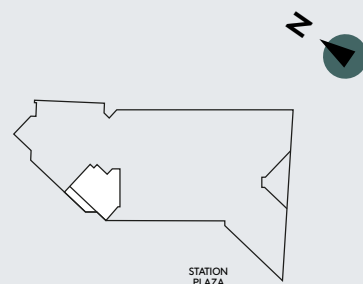
Building	Signal House
Floor	2
Apt No	10



Total Internal Area	824.2 sq ft	76.6 sq m
Living/Dining	14' 11" x 18' 0"	4545mm x 5490mm
Kitchen	7' 1" x 11' 3"	2155mm x 3440mm
Master Bedroom	17' 3" x 9' 0"	5265mm x 2735mm
Bedroom 2	9' 2" x 14' 0"	2795mm x 4260mm
Balcony	121.6 sq ft	11.3 sq m

Key

WD	Washer Dryer	HEC	Heating and Electrical Components
W	Fitted Wardrobe	C	Cupboard

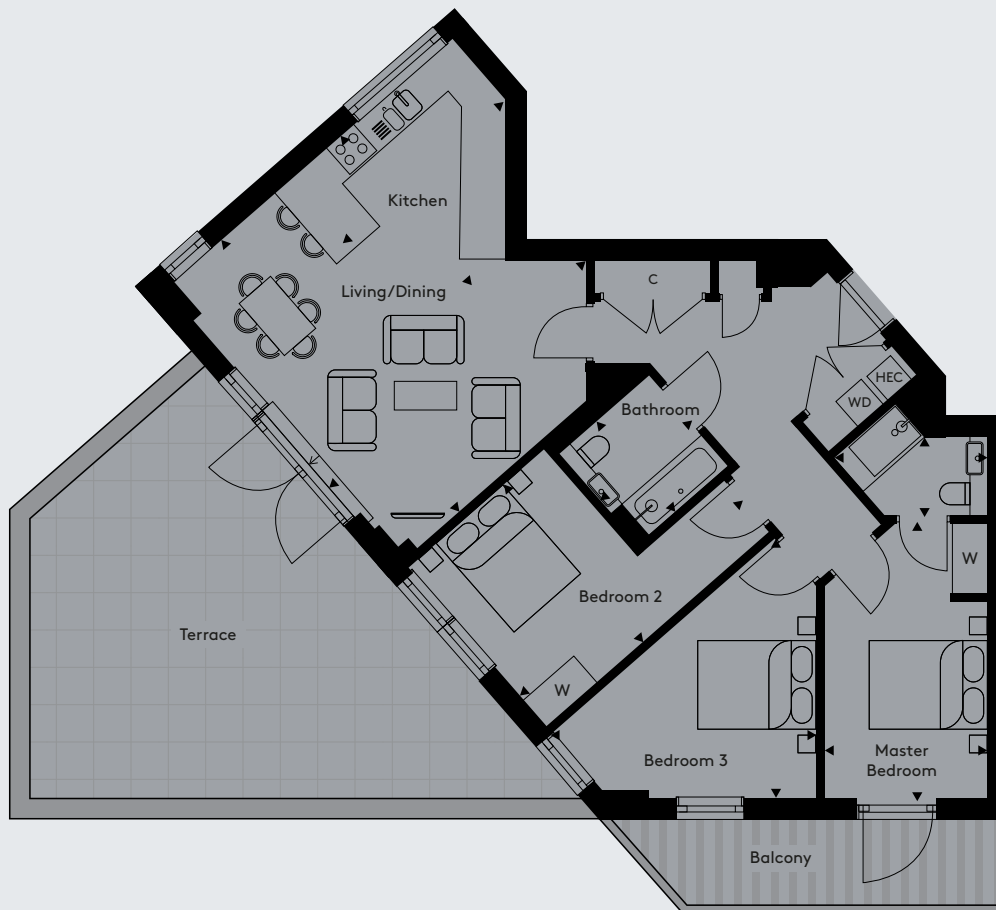


Floorplans not to scale. The room sizes shown are taken from the dimension arrows on the floorplans which represent the maximum dimensions, a tolerance of +/- 5% is allowed. External finishes on certain designs, layouts, window positions and styles may vary, please check with the sales consultant. These floor plans are a guide only and may be subject to change. Area measurements are given as Gross Internal Area (GIA).

Apartment 11

3 bedroom apartment

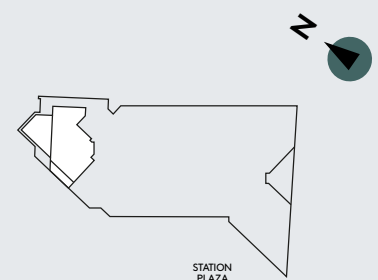
Building	Signal House
Floors	2
Apt No	11



Total Internal Area	1097.5 sq ft	102.0 sq m
Living/Dining	19' 3" x 20' 5"	5860mm x 6230mm
Kitchen	11' 2" x 12' 3"	3410mm x 3725mm
Master Bedroom	9' 3" x 15' 6"	2810mm x 4725mm
Bedroom 2	14' 8" x 15' 1"	4480mm x 4600mm
Bedroom 3	16' 11" x 11' 10"	5145mm x 3615mm
Terrace	414.3 sq ft	38.5 sq m
Balcony	102.2 sq ft	9.5 sq m

Key

WD	Washer Dryer	HEC	Heating and Electrical Components
W	Fitted Wardrobe	C	Cupboard

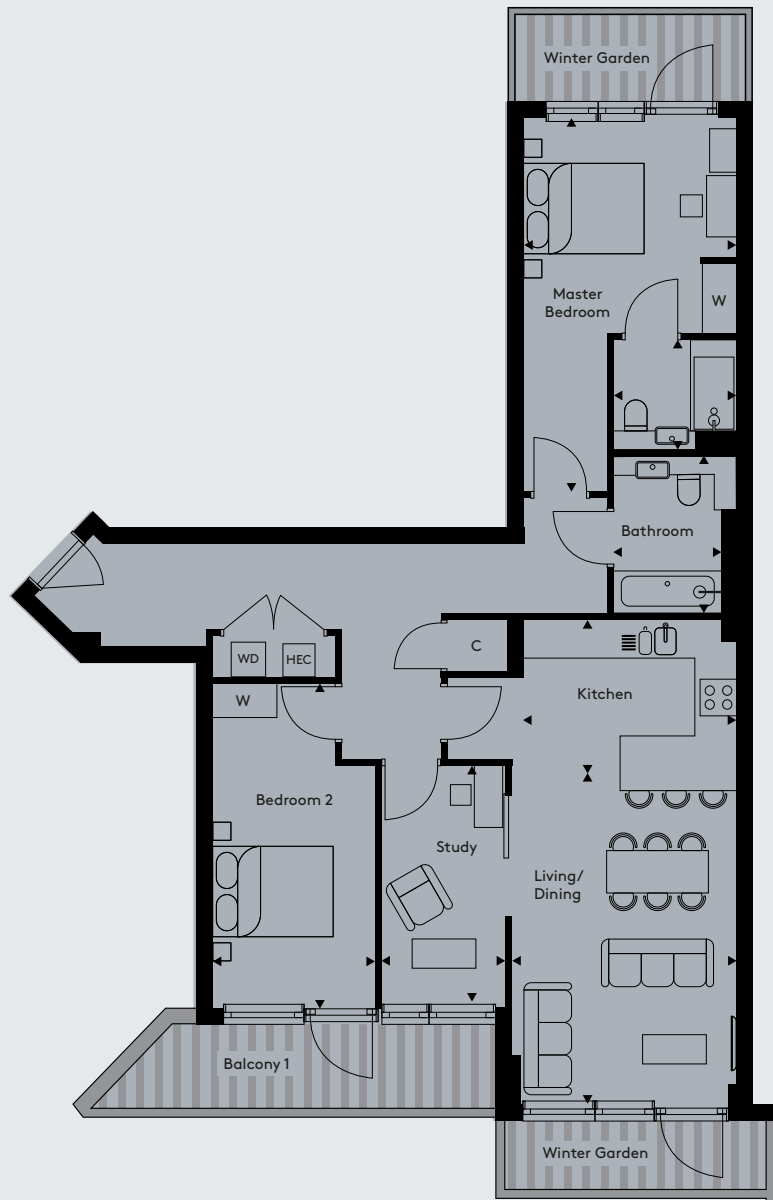


Floorplans not to scale. The room sizes shown are taken from the dimension arrows on the floorplans which represent the maximum dimensions, a tolerance of +/- 5% is allowed. External finishes on certain designs, layouts, window positions and styles may vary, please check with the sales consultant. These floor plans are a guide only and may be subject to change. Area measurements are given as Gross Internal Area (GIA).

Apartments 13, 17

2+ bedroom apartment

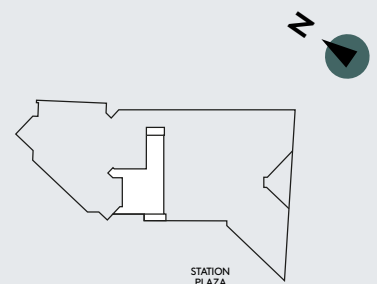
Building	Signal House
Floor	3, 4
Apt No	13, 17



Total Internal Area	1151.3 sq ft	107.0 sq m
Living/Dining	12' 3" x 18' 8"	3745mm x 5690mm
Kitchen	11' 9" x 8' 6"	3590mm x 2600mm
Master Bedroom	11' 11" x 20' 10"	3635mm x 6360mm
Bedroom 2	9' 1" x 18' 2"	2775mm x 5530mm
Study	7' 1" x 13' 6"	2155mm x 4105mm
Balcony 1	105.4 sq ft	9.8 sq m
Balcony 2	53.8 sq ft	5.0 sq m
Winter Garden	60.3 sq ft	5.6 sq m

Key

WD	Washer Dryer	HEC	Heating and Electrical Components
W	Fitted Wardrobe	C	Cupboard



Floorplans not to scale. The room sizes shown are taken from the dimension arrows on the floorplans which represent the maximum dimensions, a tolerance of +/- 5% is allowed. External finishes on certain designs, layouts, window positions and styles may vary, please check with the sales consultant. These floor plans are a guide only and may be subject to change. Area measurements are given as Gross Internal Area (GIA).

Apartment 14

2 bedroom apartment

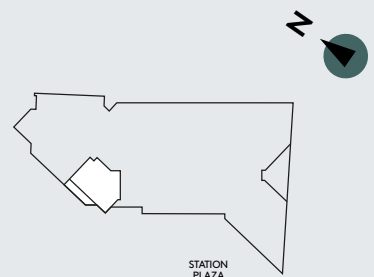
Building	Signal House
Floor	3
Apt No	14



Total Internal Area	764.0 sq ft	71.0 sq m
Living/Dining	14' 11" x 18' 2"	4545mm x 5545mm
Kitchen	5' 1" x 14' 4"	1550mm x 4360mm
Master Bedroom	17' 3" x 9' 0"	5265mm x 2735mm
Bedroom 2	9' 2" x 14' 0"	2795mm x 4260mm
Balcony	124.8 sq ft	11.6 sq m

Key

WD	Washer Dryer	HEC	Heating and Electrical Components
W	Fitted Wardrobe	C	Cupboard

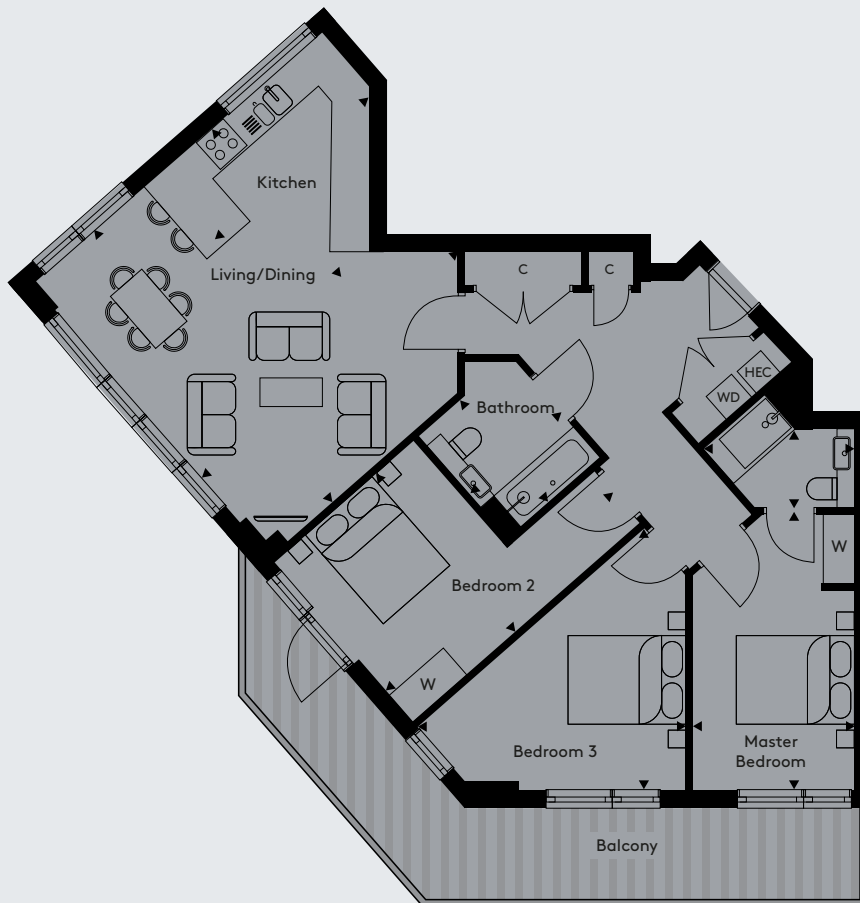


Floorplans not to scale. The room sizes shown are taken from the dimension arrows on the floorplans which represent the maximum dimensions, a tolerance of +/- 5% is allowed. External finishes on certain designs, layouts, window positions and styles may vary, please check with the sales consultant. These floor plans are a guide only and may be subject to change. Area measurements are given as Gross Internal Area (GIA).

Apartment 15

3 bedroom apartment

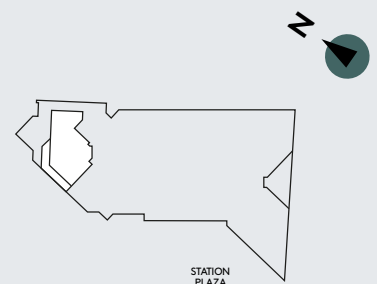
Building	Signal House
Floor	3
Apt No	15



Total Internal Area	1097.5 sq ft	102.0 sq m
Living/Dining	19' 3" x 20' 5"	5860mm x 6230mm
Kitchen	11' 2" x 12' 3"	3410mm x 3725mm
Master Bedroom	9' 3" x 15' 6"	2810mm x 4725mm
Bedroom 2	14' 8" x 15' 1"	4480mm x 4600mm
Bedroom 3	16' 11" x 11' 10"	5145mm x 3615mm
Balcony	205.5 sq ft	19.1 sq m

Key

WD	Washer Dryer	HEC	Heating and Electrical Components
W	Fitted Wardrobe	C	Cupboard

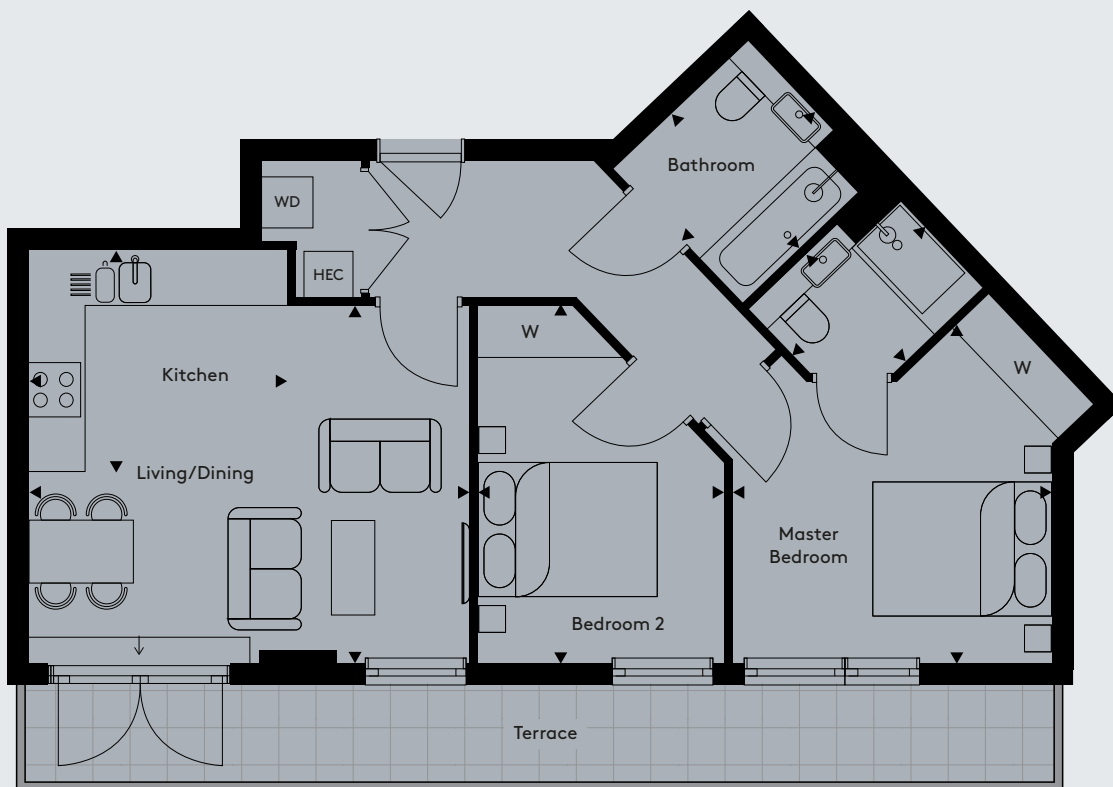


Floorplans not to scale. The room sizes shown are taken from the dimension arrows on the floorplans which represent the maximum dimensions, a tolerance of +/- 5% is allowed. External finishes on certain designs, layouts, window positions and styles may vary, please check with the sales consultant. These floor plans are a guide only and may be subject to change. Area measurements are given as Gross Internal Area (GIA).

Apartment 18

2 bedroom apartment

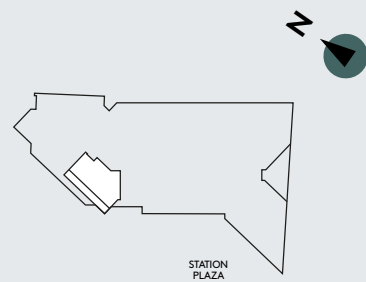
Building	Signal House
Floor	4
Apt No	18



Total Internal Area	677.9 sq ft	63.0 sq m
Living/Dining	13' 3" x 13' 3"	4045mm x 4045mm
Kitchen	8' 3" x 9' 7"	2515mm x 2930mm
Master Bedroom	12' 4" x 12' 5"	3765mm x 3785mm
Bedroom 2	9' 2" x 13' 3"	2800mm x 4045mm
Terrace	134.5 sq ft	12.5 sq m

Key

WD	Washer Dryer	HEC	Heating and Electrical Components
W	Fitted Wardrobe	C	Cupboard



Floorplans not to scale. The room sizes shown are taken from the dimension arrows on the floorplans which represent the maximum dimensions, a tolerance of +/- 5% is allowed. External finishes on certain designs, layouts, window positions and styles may vary, please check with the sales consultant. These floor plans are a guide only and may be subject to change. Area measurements are given as Gross Internal Area (GIA).

Apartment 19

2 bedroom apartment

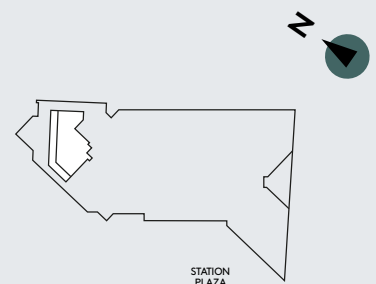
Building	Signal House
Floor	4
Apt No	19



Total Internal Area	722.0 sq ft	67.1 sq m
Living/Dining	13' 7" x 16' 9"	4130mm x 5100mm
Kitchen	9' 7" x 11' 2"	2925mm x 3410mm
Master Bedroom	11' 6" x 11' 5"	3505mm x 3490mm
Bedroom 2	11' 3" x 11' 10"	3435mm x 3600mm
Terrace	182.9 sq ft	17.0 sq m

Key

WD	Washer Dryer	HEC	Heating and Electrical Components
W	Fitted Wardrobe	C	Cupboard



Floorplans not to scale. The room sizes shown are taken from the dimension arrows on the floorplans which represent the maximum dimensions, a tolerance of +/- 5% is allowed. External finishes on certain designs, layouts, window positions and styles may vary, please check with the sales consultant. These floor plans are a guide only and may be subject to change. Area measurements are given as Gross Internal Area (GIA).



FAREGATE HOUSE

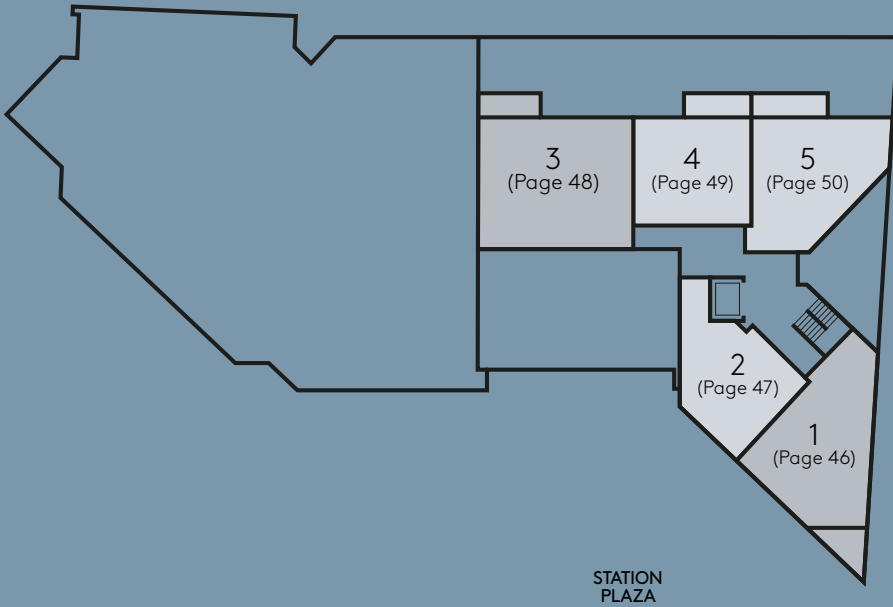


Faregate House includes 33 apartments, many overlooking the new station plaza. A mix of 1, 2 and 3 bedroom apartments close to the new riverside walkway and shops, including a Sainsburys Local and M&S Food to Go.

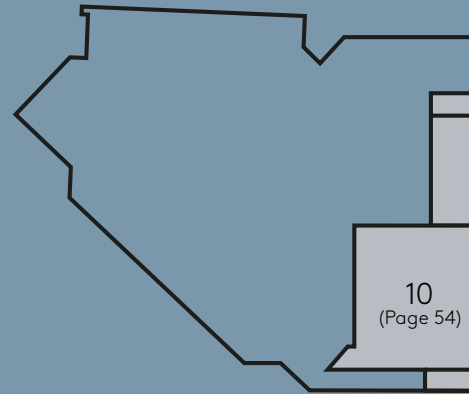
APARTMENT LOCATORS

FAREGATE HOUSE

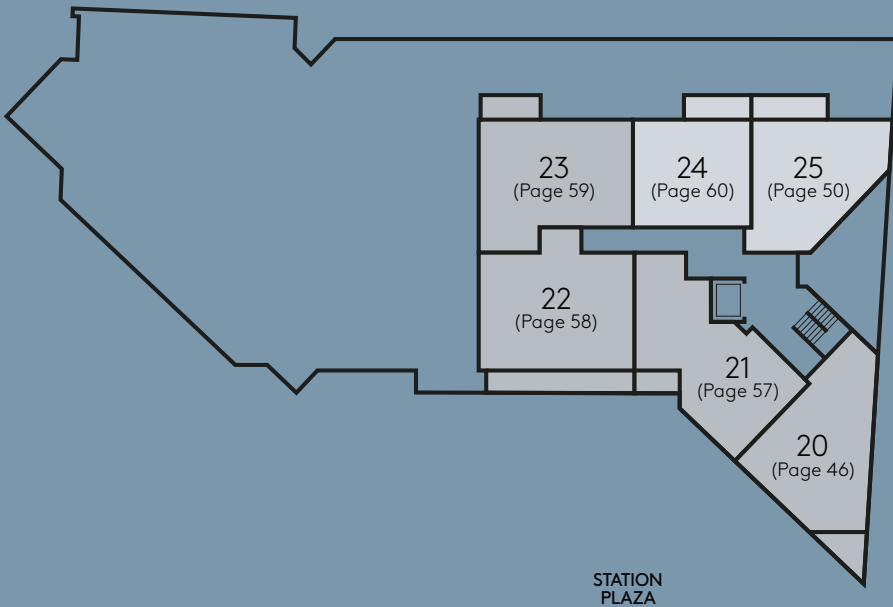
First Floor



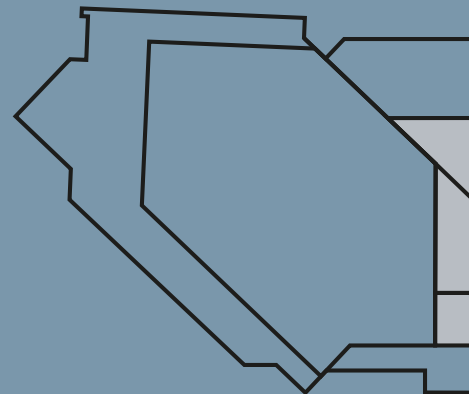
Second Floor



Fourth Floor



Fifth Floor

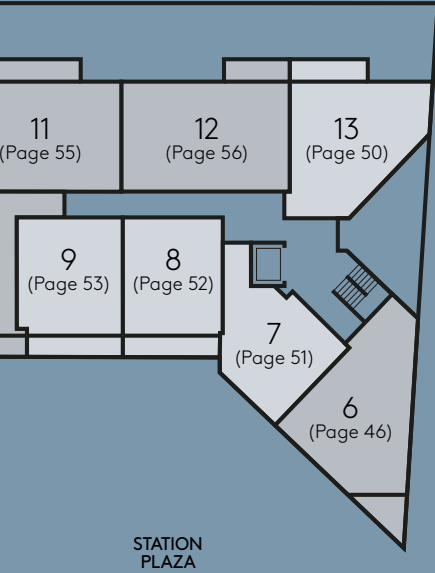


Key

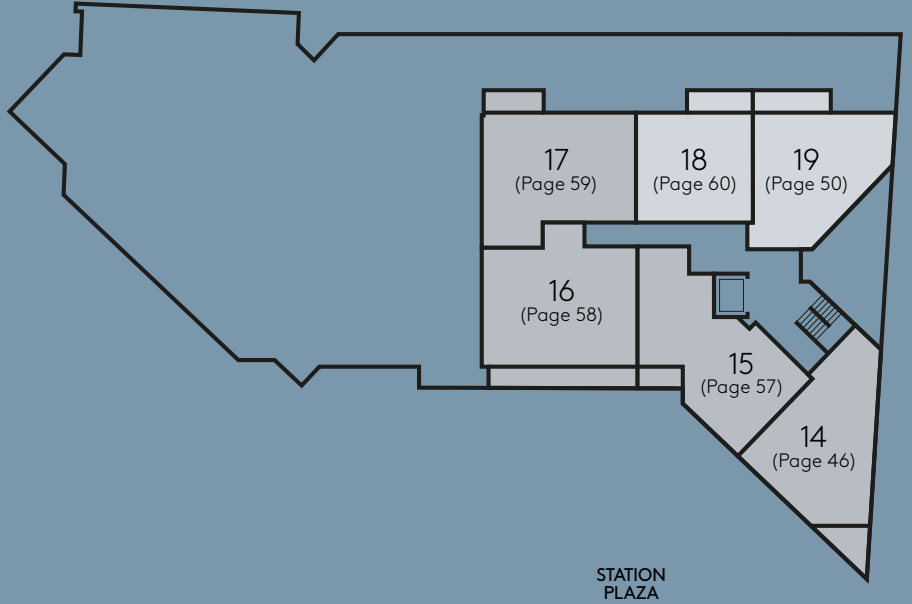
- 1 Bedroom
- 2 Bedroom
- 3 Bedroom



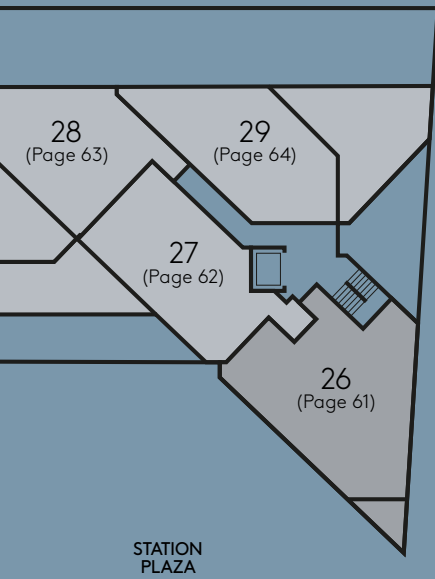
Second Floor



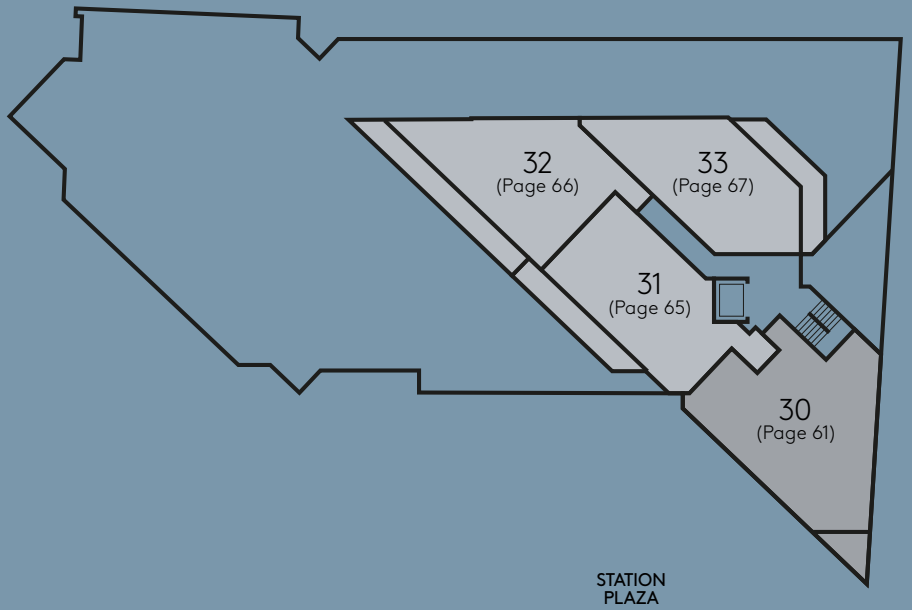
Third Floor



Fourth Floor



Sixth Floor



Apartments 1, 6, 14, 20

2 bedroom apartment

Building	Faregate House
Floors	1, 2, 3, 4
Apt No	1, 6, 14, 20

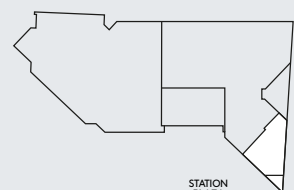


Total Internal Area	742.4 sq ft	69.0 sq m
Living/Dining	18' 4" x 18' 7"	5600mm x 5670mm
Kitchen	6' 11" x 10' 5"	2100mm x 3175mm
Master Bedroom	11' 10" x 12' 2"	3610mm x 3720mm
Bedroom 2	8' 10" x 12' 9"	2680mm x 3885mm
Balcony	50.6 sq ft	4.7 sq m



Key

WD	Washer Dryer	HEC	Heating and Electrical Components
W	Fitted Wardrobe	C	Cupboard

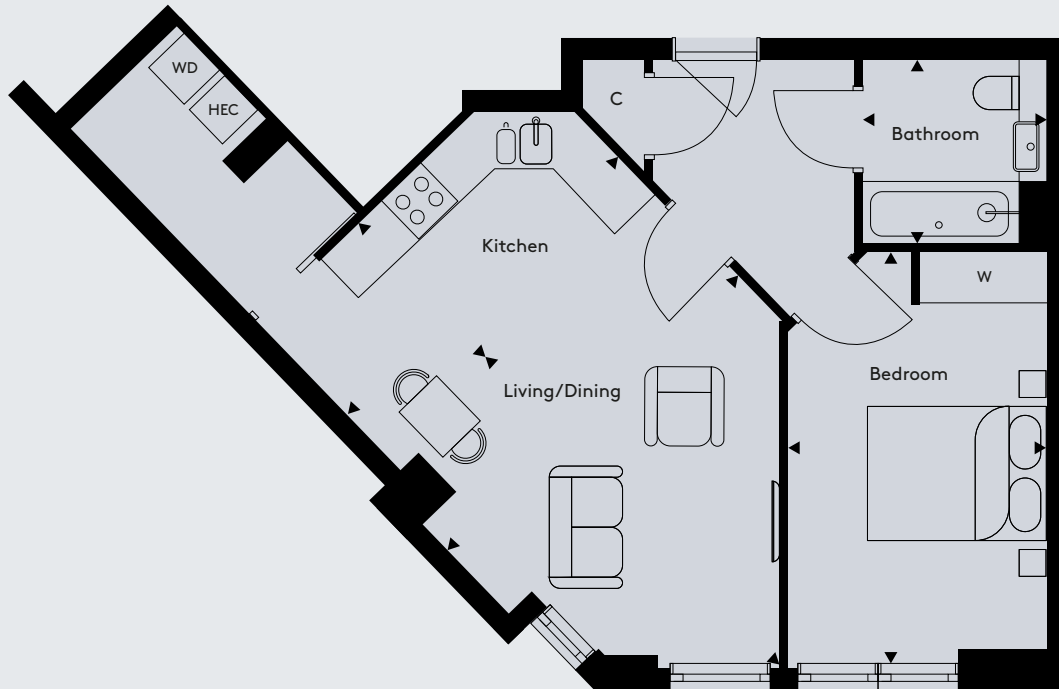


Floorplans not to scale. The room sizes shown are taken from the dimension arrows on the floorplans which represent the maximum dimensions, a tolerance of +/- 5% is allowed. External finishes on certain designs, layouts, window positions and styles may vary, please check with the sales consultant. These floor plans are a guide only and may be subject to change. Area measurements are given as Gross Internal Area (GIA).

Apartment 2

1 bedroom apartment

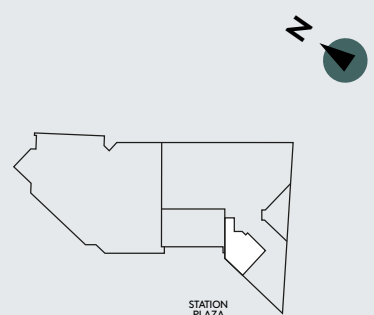
Building	Faregate House
Floors	1
Apt No	2



Total Internal Area	575.7 sq ft	53.5 sq m
Living/Dining	15' 9" x 14' 7"	4810mm x 4440mm
Kitchen	6' 11" x 14' 0"	2120mm x 4265mm
Bedroom	10' 6" x 13' 1"	2975mm x 4670mm

Key

WD	Washer Dryer	HEC	Heating and Electrical Components
W	Fitted Wardrobe	C	Cupboard



Floorplans not to scale. The room sizes shown are taken from the dimension arrows on the floorplans which represent the maximum dimensions, a tolerance of +/- 5% is allowed. External finishes on certain designs, layouts, window positions and styles may vary, please check with the sales consultant. These floor plans are a guide only and may be subject to change. Area measurements are given as Gross Internal Area (GIA).

Apartment 3

2 bedroom apartment

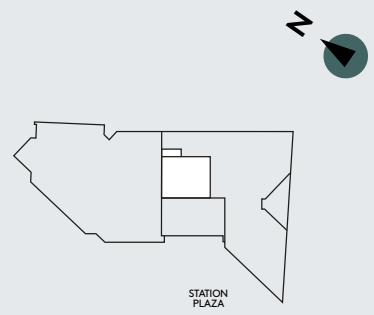
Building	Faregate House
Floor	1
Apt No	3



Total Internal Area	963.0 sq ft	89.5 sq m
Living/Dining	12' 7" x 18' 7"	3840mm x 5675mm
Kitchen	14' 9" x 9' 10"	4495mm x 3000mm
Master Bedroom	12' 2" x 14' 9"	3710mm x 4485mm
Bedroom 2	9' 0" x 14' 9"	2750mm x 4485mm
Winter Garden	59.2 sq ft	5.5 sq m

Key

WD	Washer Dryer	HEC	Heating and Electrical Components
W	Fitted Wardrobe	C	Cupboard

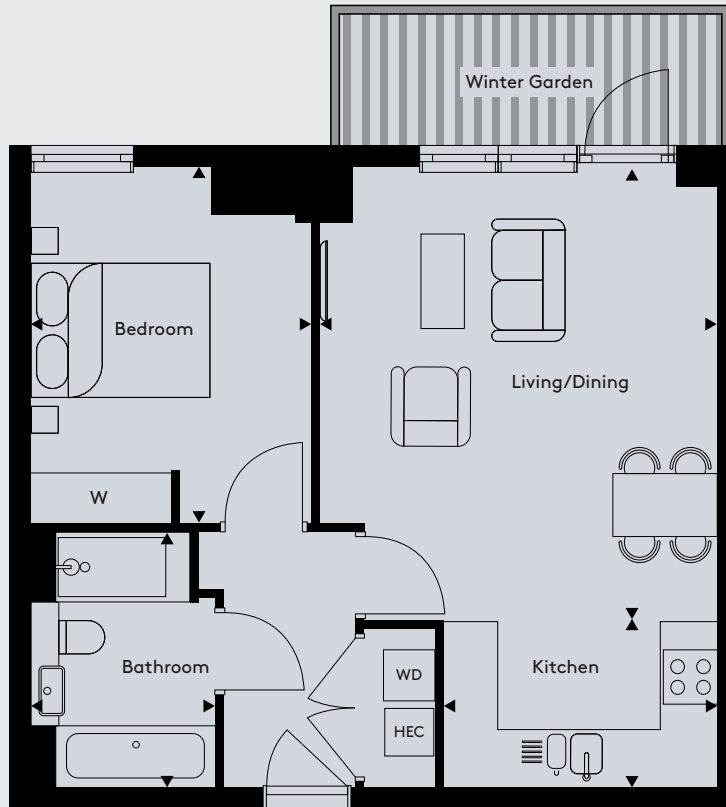


Floorplans not to scale. The room sizes shown are taken from the dimension arrows on the floorplans which represent the maximum dimensions, a tolerance of +/- 5% is allowed. External finishes on certain designs, layouts, window positions and styles may vary, please check with the sales consultant. These floor plans are a guide only and may be subject to change. Area measurements are given as Gross Internal Area (GIA).

Apartment 4

1 bedroom apartment

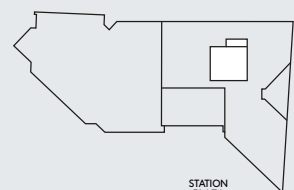
Building	Faregate House
Floors	1
Apt No	4



Total Internal Area	575.7 sq ft	53.5 sq m
Living/Dining	14' 10" x 16' 8"	4520mm x 5085mm
Kitchen	6' 3" x 10' 3"	1900mm x 3120mm
Bedroom	10' 6" x 13' 1"	3200mm x 3985mm
Winter Garden	65.6 sq ft	6.1 sq m

Key

WD	Washer Dryer	HEC	Heating and Electrical Components
W	Fitted Wardrobe	C	Cupboard

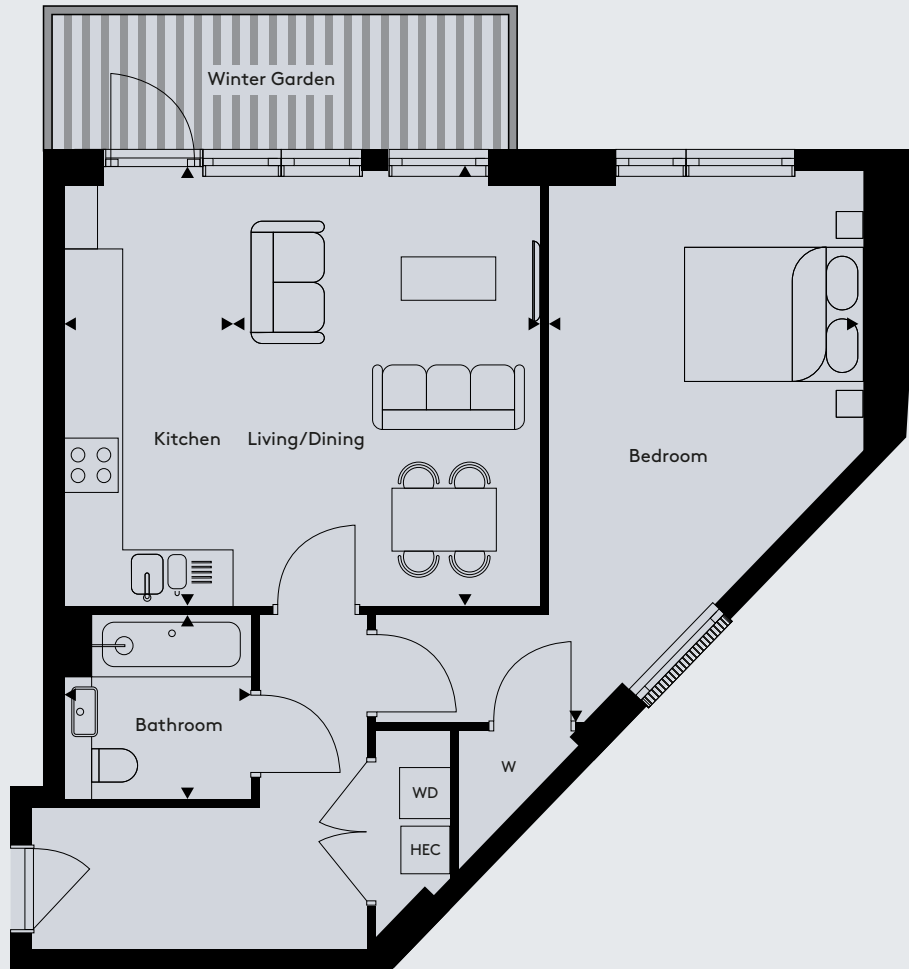


Floorplans not to scale. The room sizes shown are taken from the dimension arrows on the floorplans which represent the maximum dimensions, a tolerance of +/- 5% is allowed. External finishes on certain designs, layouts, window positions and styles may vary, please check with the sales consultant. These floor plans are a guide only and may be subject to change. Area measurements are given as Gross Internal Area (GIA).

Apartment 5, 13, 19, 25

1 bedroom apartment

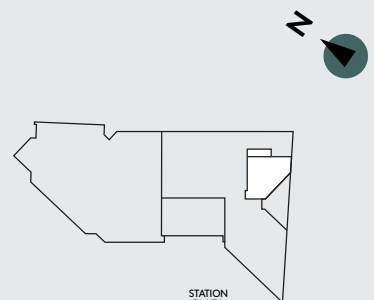
Building	Faregate House
Floors	1, 2, 3, 4
Apt No	5, 13, 19, 25



Total Internal Area	690.8 sq ft	64.2 sq m
Living/Dining	11' 5" x 16' 2"	3490mm x 4935mm
Kitchen	6' 3" x 16' 2"	1900mm x 4935mm
Bedroom	20' 0" x 11' 8"	6100mm x 3545mm
Winter Garden	77.5 sq ft	7.2 sq m

Key

WD	Washer Dryer	HEC	Heating and Electrical Components
W	Fitted Wardrobe	C	Cupboard

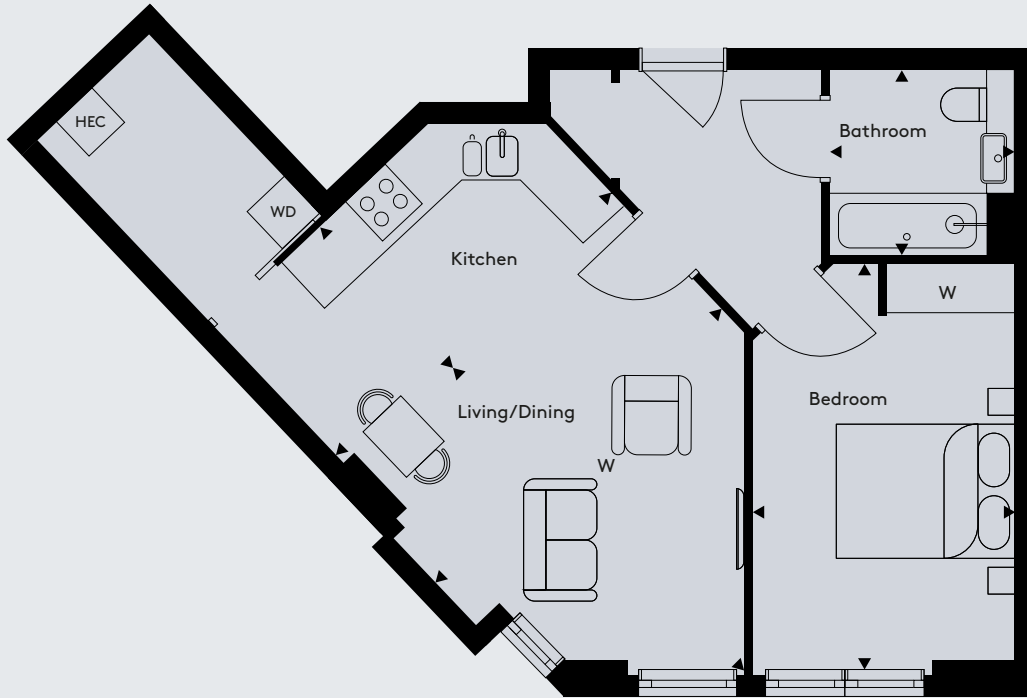


Floorplans not to scale. The room sizes shown are taken from the dimension arrows on the floorplans which represent the maximum dimensions, a tolerance of +/- 5% is allowed. External finishes on certain designs, layouts, window positions and styles may vary, please check with the sales consultant. These floor plans are a guide only and may be subject to change. Area measurements are given as Gross Internal Area (GIA).

Apartment 7

1 bedroom apartment

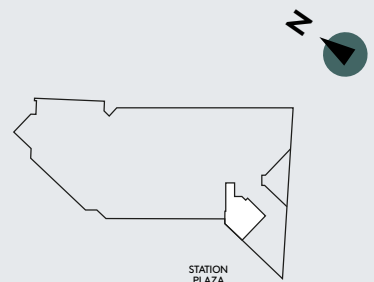
Building	Faregate House
Floor	2
Apt No	7



Total Internal Area	578.9 sq ft	53.8 sq m
Living/Dining	15' 9" x 14' 7"	4810mm x 4440mm
Kitchen	7' 0" x 14' 0"	2125mm x 4265mm
Bedroom	9' 9" x 15' 4"	2975mm x 4670mm

Key

WD	Washer Dryer	HEC	Heating and Electrical Components
W	Fitted Wardrobe	C	Cupboard

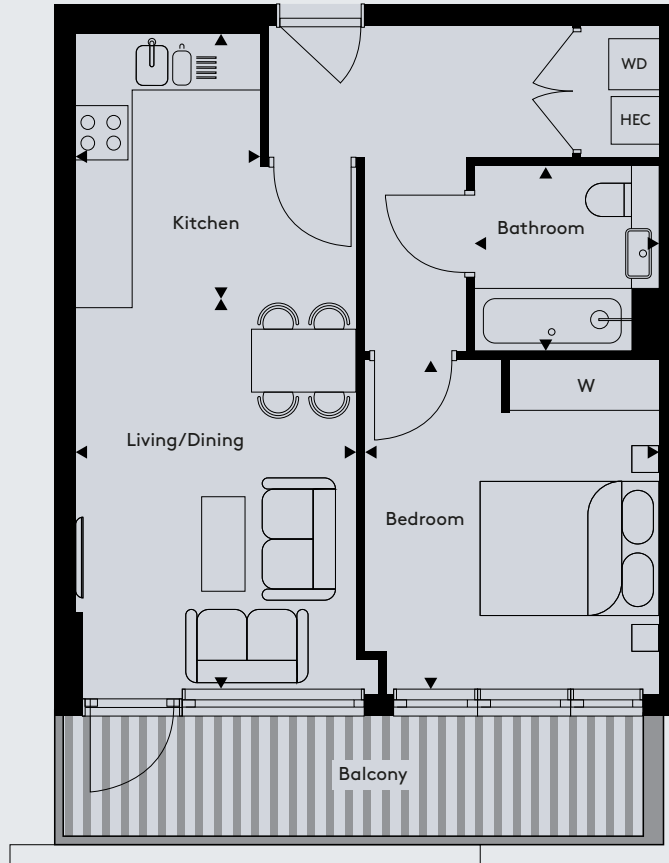


Floorplans not to scale. The room sizes shown are taken from the dimension arrows on the floorplans which represent the maximum dimensions, a tolerance of +/- 5% is allowed. External finishes on certain designs, layouts, window positions and styles may vary, please check with the sales consultant. These floor plans are a guide only and may be subject to change. Area measurements are given as Gross Internal Area (GIA).

Apartment 8

1 bedroom apartment

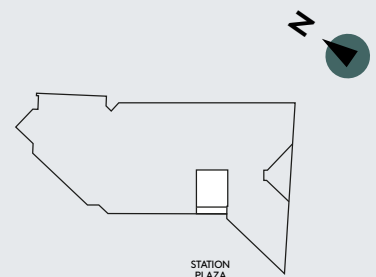
Building	Faregate House
Floor	2
Apt No	8



Total Internal Area	538.0 sq ft	50.0 sq m
Living/Dining	10' 6" x 14' 10"	3190mm x 4510mm
Kitchen	6' 11" x 9' 11"	2100mm x 3015mm
Bedroom	11' 0" x 12' 6"	3350mm x 3820mm
Balcony	96.1 sq ft	8.9 sq m

Key

WD	Washer Dryer	HEC	Heating and Electrical Components
W	Fitted Wardrobe	C	Cupboard

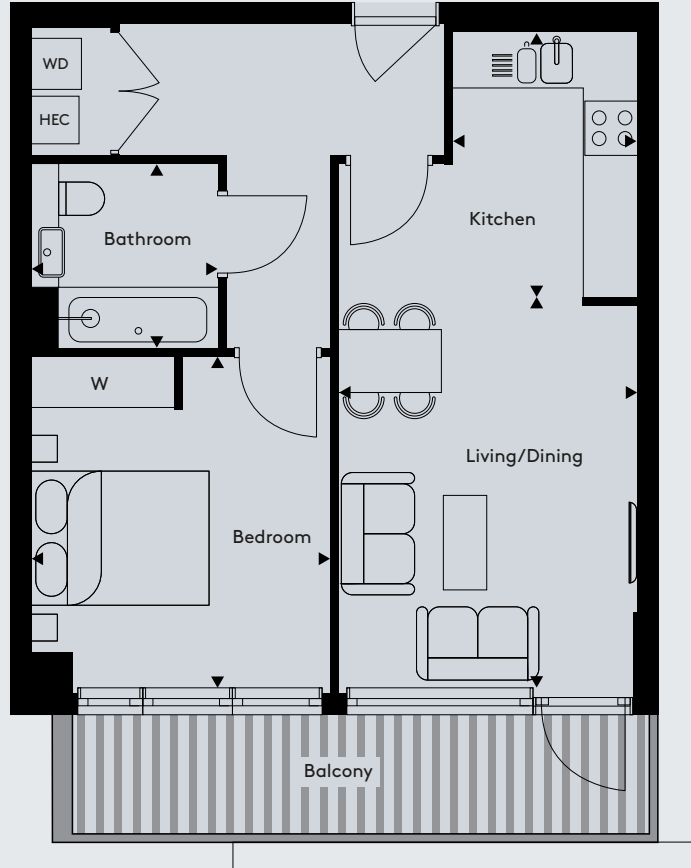


Floorplans not to scale. The room sizes shown are taken from the dimension arrows on the floorplans which represent the maximum dimensions, a tolerance of +/- 5% is allowed. External finishes on certain designs, layouts, window positions and styles may vary, please check with the sales consultant. These floor plans are a guide only and may be subject to change. Area measurements are given as Gross Internal Area (GIA).

Apartment 9

1 bedroom apartment

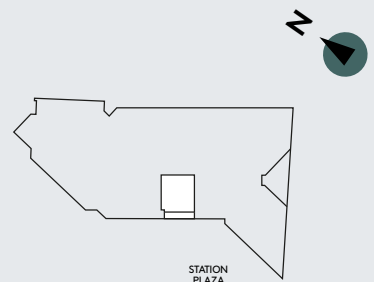
Building	Faregate House
Floor	2
Apt No	9



Total Internal Area	566.0 sq ft	52.6 sq m
Living/Dining	11' 2" x 14' 10"	3400mm x 4510mm
Kitchen	6' 11" x 9' 11"	2100mm x 3015mm
Bedroom	11' 5" x 12' 6"	3475mm x 3820mm
Balcony	94.5 sq ft	8.8 sq m

Key

WD	Washer Dryer	HEC	Heating and Electrical Components
W	Fitted Wardrobe	C	Cupboard

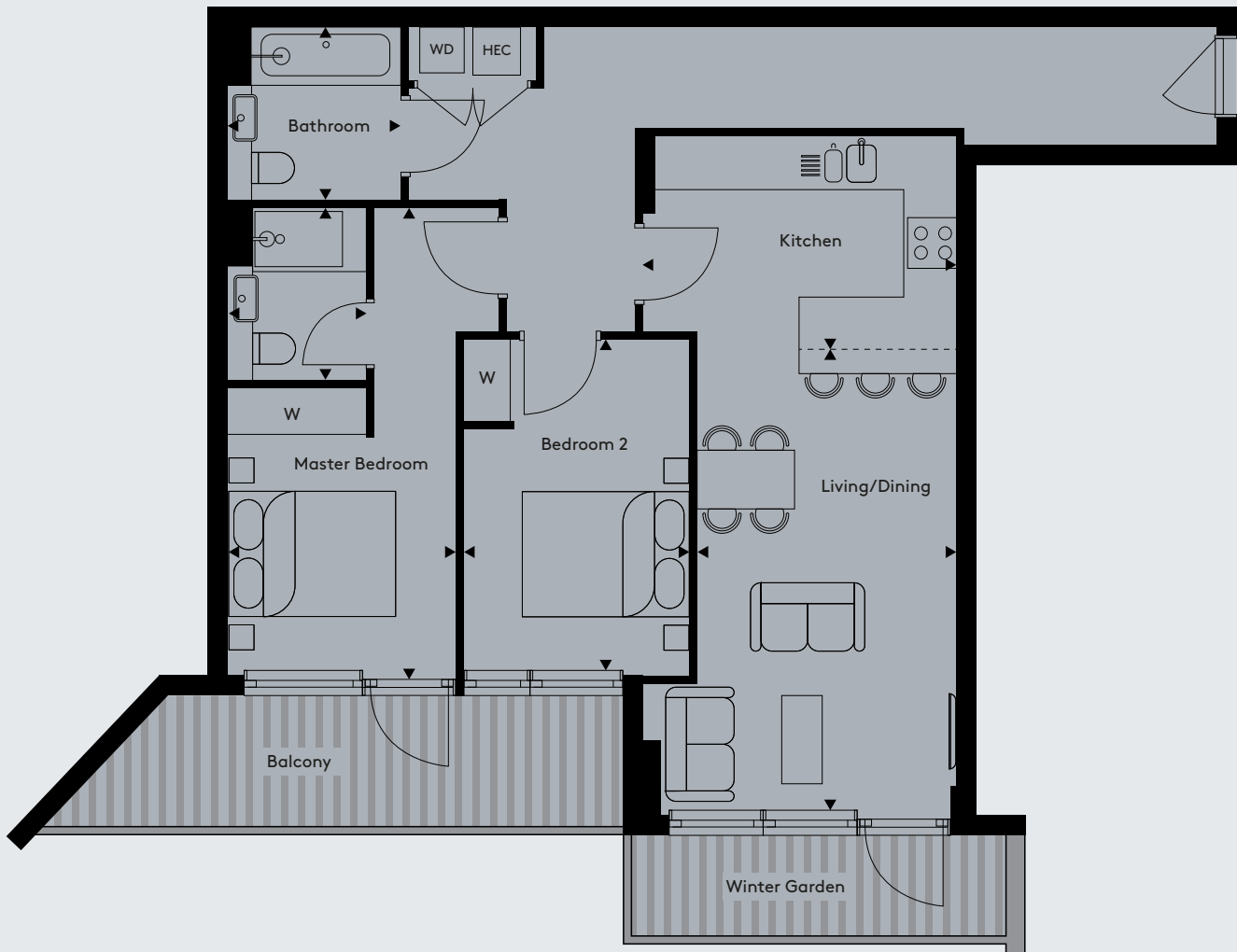


Floorplans not to scale. The room sizes shown are taken from the dimension arrows on the floorplans which represent the maximum dimensions, a tolerance of +/- 5% is allowed. External finishes on certain designs, layouts, window positions and styles may vary, please check with the sales consultant. These floor plans are a guide only and may be subject to change. Area measurements are given as Gross Internal Area (GIA).

Apartment 10

2 bedroom apartment

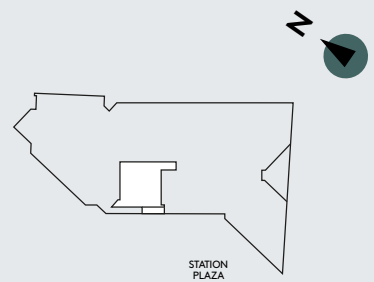
Building	Faregate House
Floor	2
Apt No	10



Total Internal Area	866.2 sq ft	80.5 sq m
Living/Dining	10' 4" x 18' 8"	3150mm x 5685mm
Kitchen	12' 6" x 8' 7"	3820mm x 2605mm
Master Bedroom	9' 1" x 18' 9"	2775mm x 5705mm
Bedroom 2	9' 0" x 13' 6"	2750mm x 4105mm
Winter Garden	53.8 sq ft	5.0 sq m
Balcony	102.2 sq ft	9.5 sq m

Key

WD	Washer Dryer	HEC	Heating and Electrical Components
W	Fitted Wardrobe	C	Cupboard

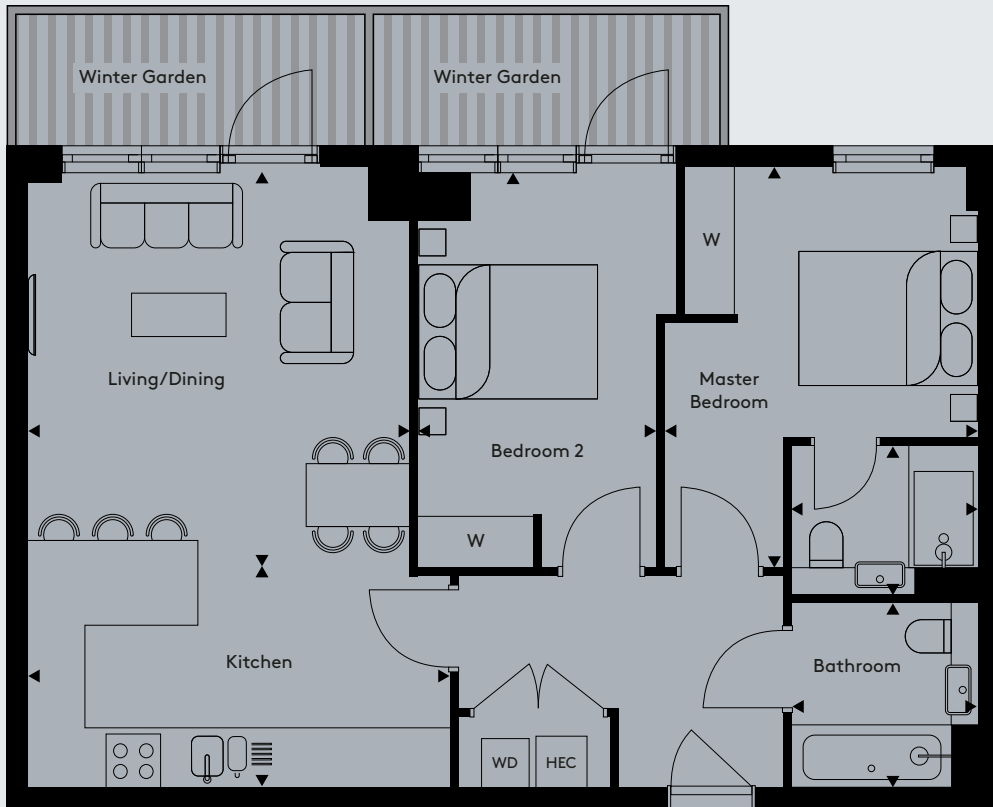


Floorplans not to scale. The room sizes shown are taken from the dimension arrows on the floorplans which represent the maximum dimensions, a tolerance of +/- 5% is allowed. External finishes on certain designs, layouts, window positions and styles may vary, please check with the sales consultant. These floor plans are a guide only and may be subject to change. Area measurements are given as Gross Internal Area (GIA).

Apartment 11

2 bedroom apartment

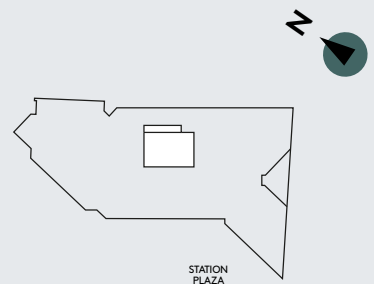
Building	Faregate House
Floor	2
Apt No	11



Total Internal Area	803.8 sq ft	74.7 sq m
Living/Dining	14' 8" x 14' 3"	4480mm x 4335mm
Kitchen	8' 3" x 15' 9"	2505mm x 4795mm
Master Bedroom	11' 8" x 14' 9"	3560mm x 4485mm
Bedroom 2	8' 10" x 14' 9"	2705mm x 4485mm
Winter Garden	60.3 sq ft	5.6 sq m
Winter Garden	59.2 sq ft	5.5 sq m

Key

- WD Washer Dryer
- HEC Heating and Electrical Components
- W Fitted Wardrobe
- C Cupboard

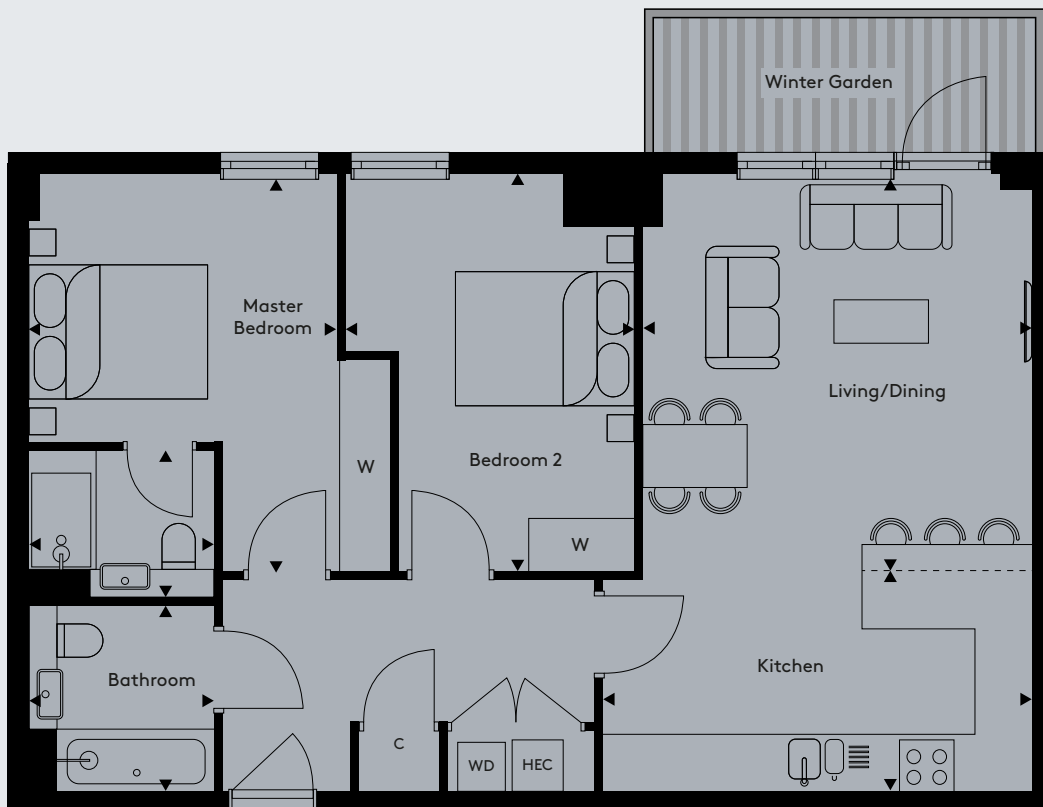


Floorplans not to scale. The room sizes shown are taken from the dimension arrows on the floorplans which represent the maximum dimensions, a tolerance of +/- 5% is allowed. External finishes on certain designs, layouts, window positions and styles may vary, please check with the sales consultant. These floor plans are a guide only and may be subject to change. Area measurements are given as Gross Internal Area (GIA).

Apartment 12

2 bedroom apartment

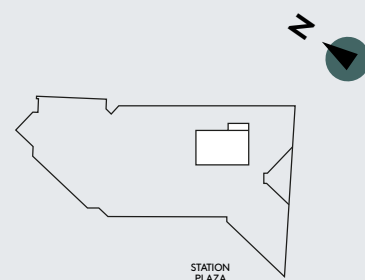
Building	Faregate House
Floor	2
Apt No	12



Total Internal Area	847.9 sq ft	78.8 sq m
Living/Dining	14' 8" x 14' 6"	4480mm x 4420mm
Kitchen	8' 3" x 16' 0"	2505mm x 4875mm
Master Bedroom	11' 6" x 14' 9"	3500mm x 4485mm
Bedroom 2	10' 9" x 14' 9"	3285mm x 4485mm
Balcony	65.6 sq ft	6.1 sq m

Key

WD	Washer Dryer	HEC	Heating and Electrical Components
W	Fitted Wardrobe	C	Cupboard



Floorplans not to scale. The room sizes shown are taken from the dimension arrows on the floorplans which represent the maximum dimensions, a tolerance of +/- 5% is allowed. External finishes on certain designs, layouts, window positions and styles may vary, please check with the sales consultant. These floor plans are a guide only and may be subject to change. Area measurements are given as Gross Internal Area (GIA).

Apartments 15, 21

2 bedroom apartment

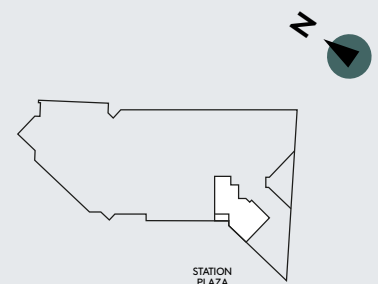
Building	Faregate House
Floors	3, 4
Apt No	15, 21



Total Internal Area	855.4 sq ft	79.5 sq m
Living/Dining	16' 1" x 16' 6"	4895mm x 5040mm
Kitchen	9' 9" x 10' 11"	2970mm x 3335mm
Master Bedroom	16' 10" x 11' 4"	5120mm x 3450mm
Bedroom 2	12' 6" x 16' 3"	3815mm x 4965mm
Balcony	43.0 sq ft	4.0 sq m

Key

WD	Washer Dryer	HEC	Heating and Electrical Components
W	Fitted Wardrobe	C	Cupboard

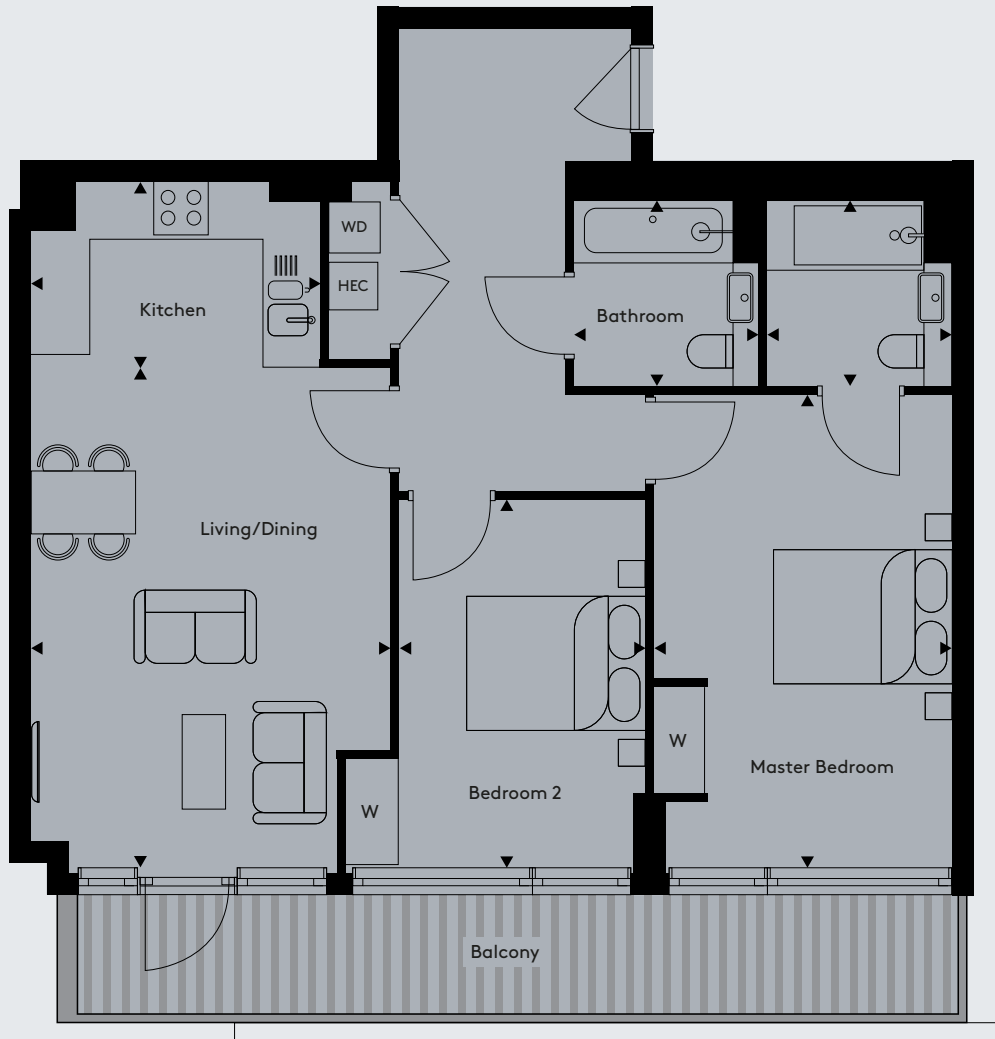


Floorplans not to scale. The room sizes shown are taken from the dimension arrows on the floorplans which represent the maximum dimensions, a tolerance of +/- 5% is allowed. External finishes on certain designs, layouts, window positions and styles may vary, please check with the sales consultant. These floor plans are a guide only and may be subject to change. Area measurements are given as Gross Internal Area (GIA).

Apartments 16, 22

2 bedroom apartment

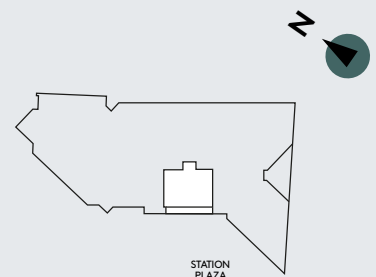
Building	Faregate House
Floors	3, 4
Apt No	16, 22



Total Internal Area	920.0 sq ft	85.5 sq m
Living/Dining	13' 4" x 18' 10"	4075mm x 5745mm
Kitchen	6' 11" x 10' 8"	2120mm x 3260mm
Master Bedroom	11' 1" x 17' 10"	3385mm x 5445mm
Bedroom 2	9' 2" x 14' 0"	2800mm x 4255mm
Balcony	145.8 sq ft	13.6 sq m

Key

WD	Washer Dryer	HEC	Heating and Electrical Components
W	Fitted Wardrobe	C	Cupboard



Floorplans not to scale. The room sizes shown are taken from the dimension arrows on the floorplans which represent the maximum dimensions, a tolerance of +/- 5% is allowed. External finishes on certain designs, layouts, window positions and styles may vary, please check with the sales consultant. These floor plans are a guide only and may be subject to change. Area measurements are given as Gross Internal Area (GIA).

Apartments 17, 23

2 bedroom apartment

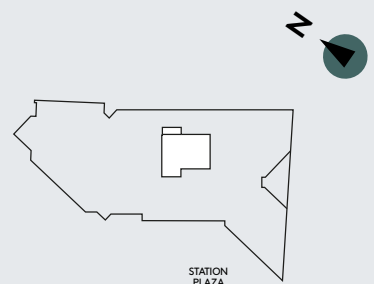
Building	Faregate House
Floors	3, 4
Apt No	17, 23



Total Internal Area	856.6 sq ft	79.8 sq m
Living/Dining	12' 7" x 19' 1"	3840mm x 5810mm
Kitchen	12' 11" x 9' 7"	3940mm x 2925mm
Master Bedroom	12' 2" x 14' 9"	3710mm x 4485mm
Bedroom 2	9' 0" x 14' 9"	2750mm x 4485mm
Winter Garden	59.2 sq ft	5.5 sq m

Key

WD	Washer Dryer	HEC	Heating and Electrical Components
W	Fitted Wardrobe	C	Cupboard

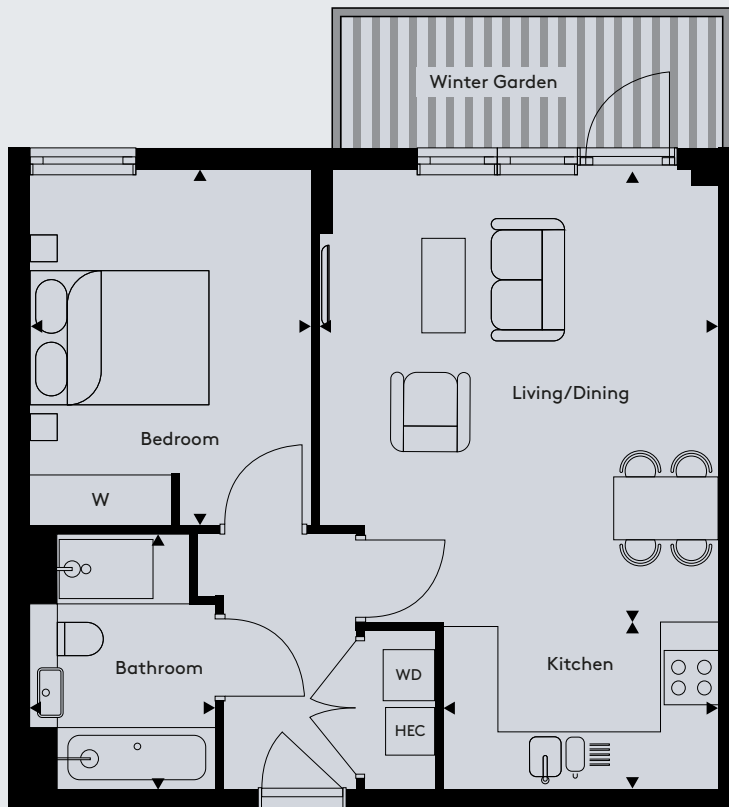


Floorplans not to scale. The room sizes shown are taken from the dimension arrows on the floorplans which represent the maximum dimensions, a tolerance of +/- 5% is allowed. External finishes on certain designs, layouts, window positions and styles may vary, please check with the sales consultant. These floor plans are a guide only and may be subject to change. Area measurements are given as Gross Internal Area (GIA).

Apartments 18, 24

1 bedroom apartment

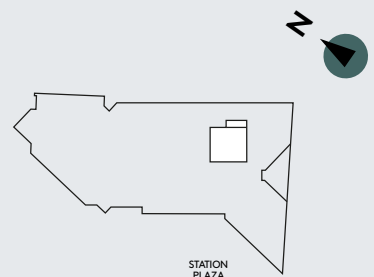
Building	Faregate House
Floors	3, 4
Apt No	18, 24



Total Internal Area	583.2 sq ft	54.2 sq m
Living/Dining	14' 10" x 16' 8"	4520mm x 5085mm
Kitchen	6' 3" x 10' 3"	1900mm x 3120mm
Bedroom	10' 6" x 13' 1"	3200mm x 3985mm
Winter Garden	65.6 sq ft	6.1 sq m

Key

WD	Washer Dryer	HEC	Heating and Electrical Components
W	Fitted Wardrobe	C	Cupboard

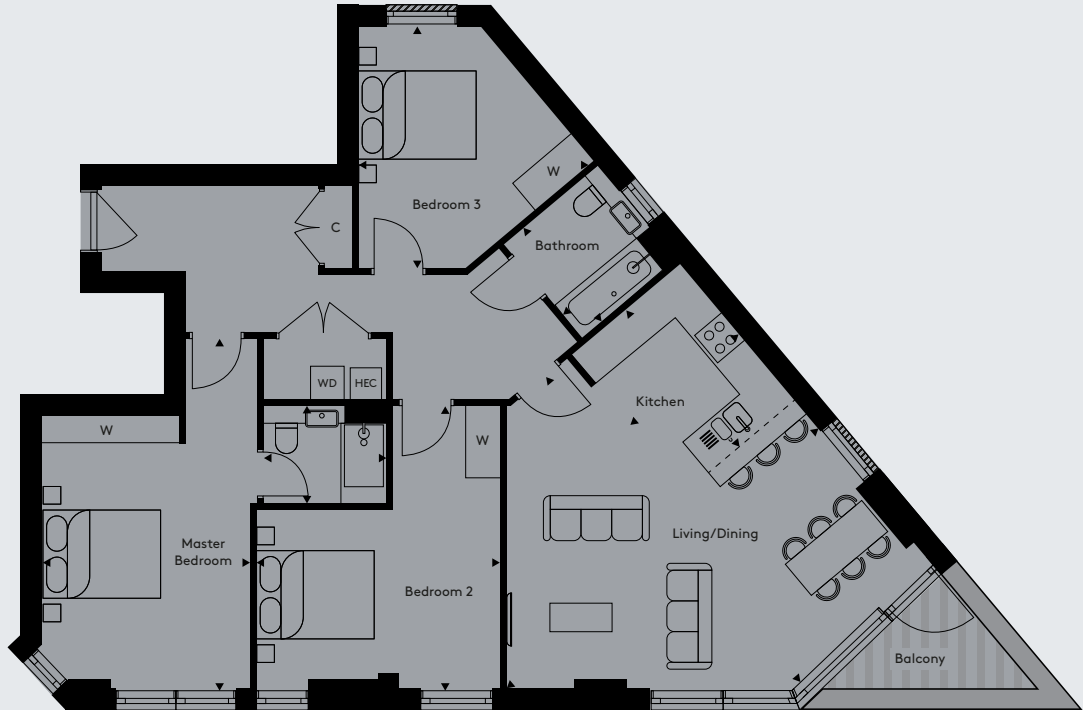


Floorplans not to scale. The room sizes shown are taken from the dimension arrows on the floorplans which represent the maximum dimensions, a tolerance of +/- 5% is allowed. External finishes on certain designs, layouts, window positions and styles may vary, please check with the sales consultant. These floor plans are a guide only and may be subject to change. Area measurements are given as Gross Internal Area (GIA).

Apartments 26, 30

3 bedroom apartment

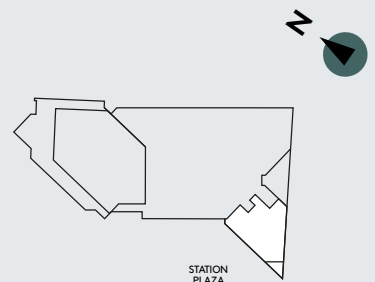
Building	Faregate House
Floors	5, 6
Apt No	26, 30



Total Internal Area	1194.4 sq ft	111.0 sq m
Living/Dining	22' 9" x 22' 5"	6925mm x 6820mm
Kitchen	7' 11" x 10' 0"	2410mm x 3045mm
Master Bedroom	11' 8" x 19' 9"	3550mm x 6015mm
Bedroom 2	13' 9" x 15' 10"	4180mm x 4820mm
Bedroom 3	12' 11" x 13' 7"	3935mm x 4135mm
Balcony	50.6 sq ft	4.7 sq m

Key

WD	Washer Dryer	HEC	Heating and Electrical Components
W	Fitted Wardrobe	C	Cupboard

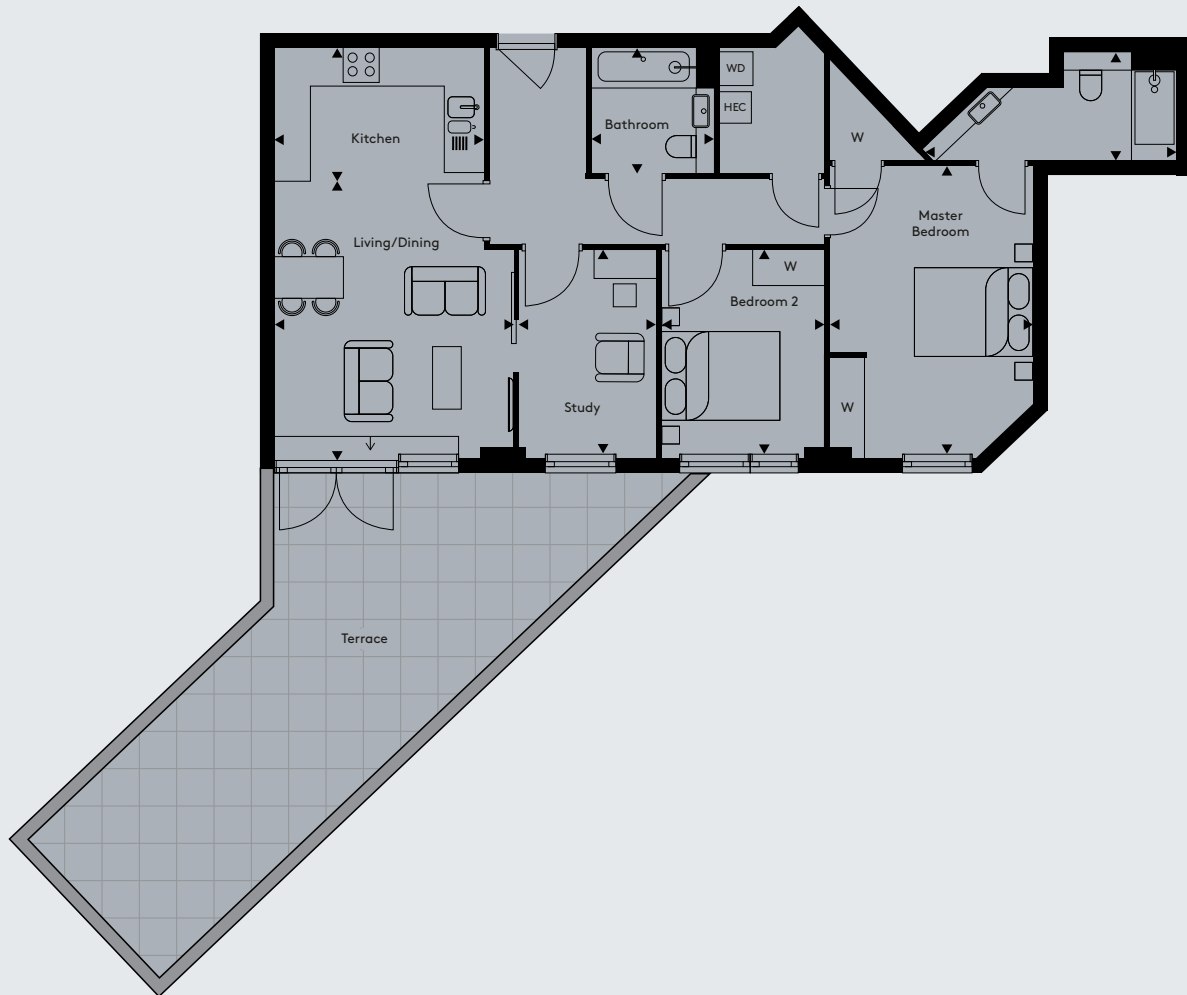


Floorplans not to scale. The room sizes shown are taken from the dimension arrows on the floorplans which represent the maximum dimensions, a tolerance of +/- 5% is allowed. External finishes on certain designs, layouts, window positions and styles may vary, please check with the sales consultant. These floor plans are a guide only and may be subject to change. Area measurements are given as Gross Internal Area (GIA).

Apartment 27

2+ bedroom apartment

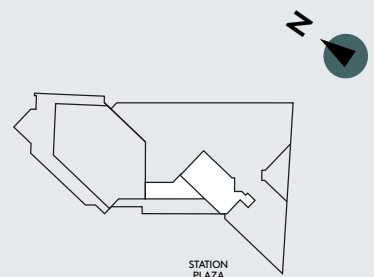
Building	Faregate House
Floor	5
Apt No	27



Total Internal Area	968.4 sq ft	90.0 sq m
Living/Dining	13' 5" x 15' 4"	4090mm x 4665mm
Kitchen	11' 9" x 7' 6"	3585mm x 2280mm
Master Bedroom	11' 4" x 16' 2"	3460mm x 4920mm
Bedroom 2	9' 1" x 11' 6"	2780mm x 3500mm
Study	7' 7" x 11' 6"	2320mm x 3500mm
Terrace	441.2 sq ft	41.0 sq m

Key

WD	Washer Dryer	HEC	Heating and Electrical Components
W	Fitted Wardrobe	C	Cupboard

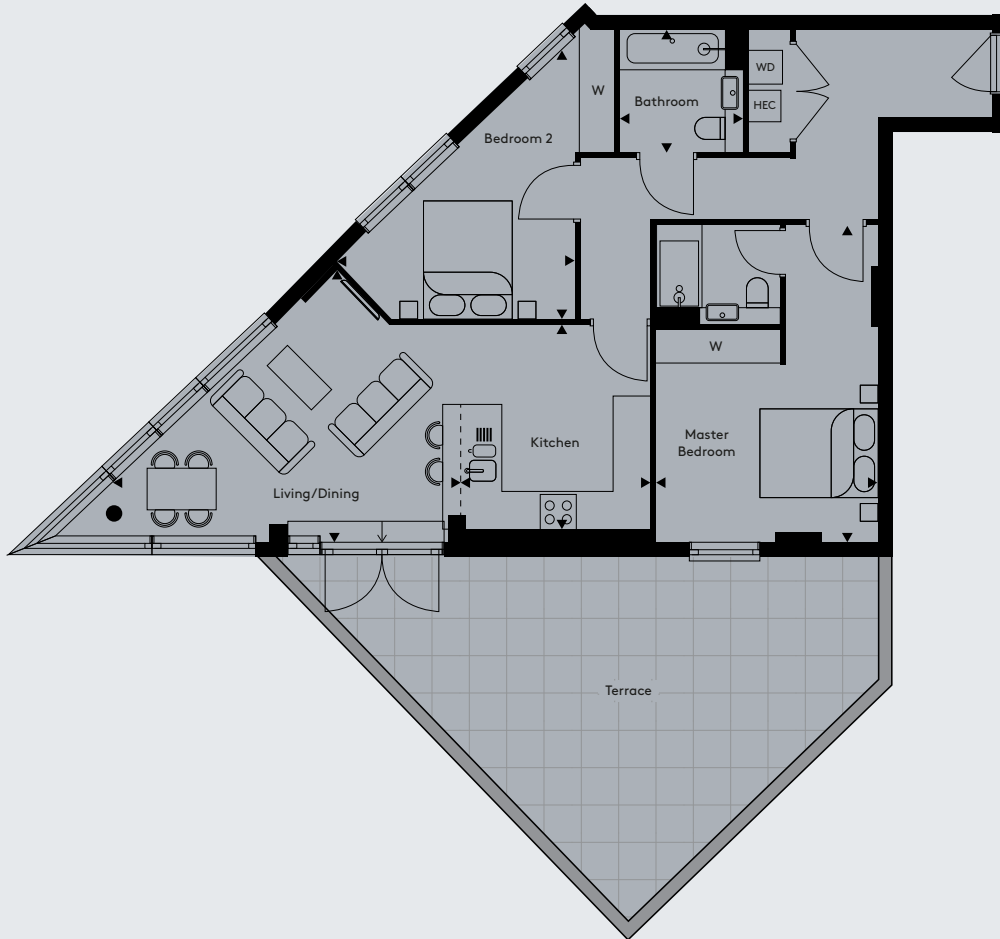


Floorplans not to scale. The room sizes shown are taken from the dimension arrows on the floorplans which represent the maximum dimensions, a tolerance of +/- 5% is allowed. External finishes on certain designs, layouts, window positions and styles may vary, please check with the sales consultant. These floor plans are a guide only and may be subject to change. Area measurements are given as Gross Internal Area (GIA).

Apartment 28

2 bedroom apartment

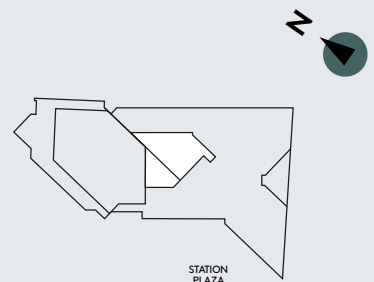
Building	Faregate House
Floor	5
Apt No	28



Total Internal Area	937.2 sq ft	87.1 sq m
Living/Dining	14' 6" x 23' 4"	4410mm x 7100mm
Kitchen	11' 6" x 10' 8"	3495mm x 3255mm
Master Bedroom	12' 4" x 17' 6"	3770mm x 5340mm
Bedroom 2	13' 5" x 16' 2"	4080mm x 4940mm
Terrace	412.1 sq ft	38.3 sq m

Key

WD	Washer Dryer	HEC	Heating and Electrical Components
W	Fitted Wardrobe	C	Cupboard



Floorplans not to scale. The room sizes shown are taken from the dimension arrows on the floorplans which represent the maximum dimensions, a tolerance of +/- 5% is allowed. External finishes on certain designs, layouts, window positions and styles may vary, please check with the sales consultant. These floor plans are a guide only and may be subject to change. Area measurements are given as Gross Internal Area (GIA).

Apartment 29

2 bedroom apartment

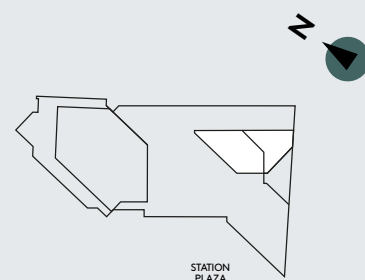
Building	Faregate House
Floor	5
Apt No	29



Total Internal Area	852.2 sq ft	79.2 sq m
Living/Dining	17' 9" x 16' 4"	5420mm x 4970mm
Kitchen	9' 3" x 8' 6"	2820mm x 2580mm
Master Bedroom	14' 2" x 16' 3"	4320mm x 4960mm
Bedroom 2	11' 11" x 12' 4"	3625mm x 3760mm
Terrace	473.4 sq ft	44.0 sq m

Key

WD	Washer Dryer	HEC	Heating and Electrical Components
W	Fitted Wardrobe	C	Cupboard

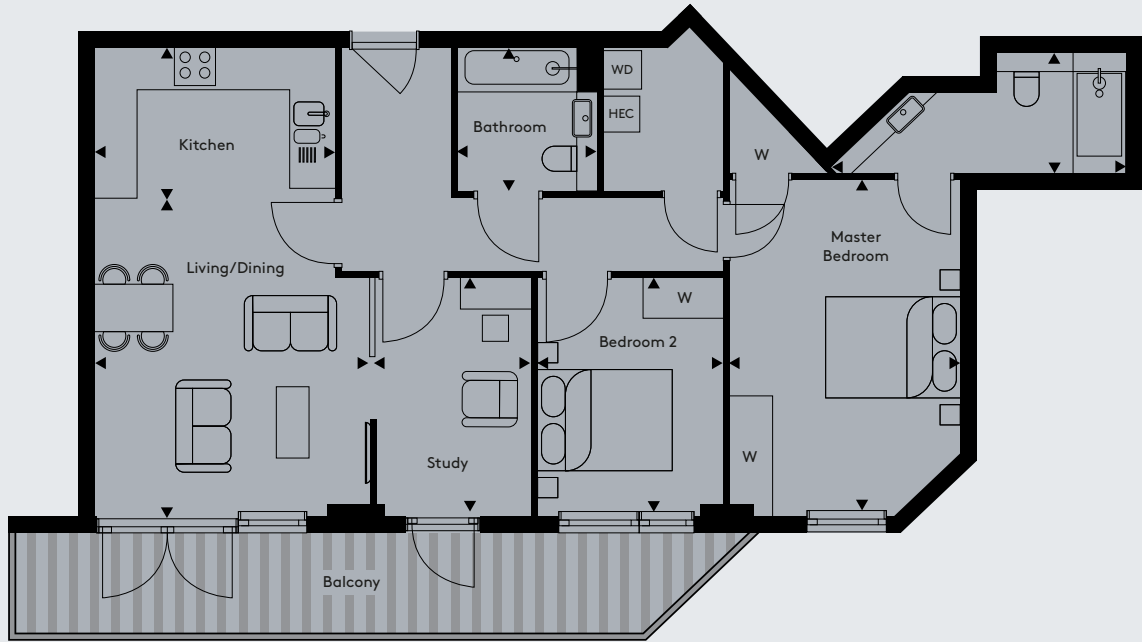


Floorplans not to scale. The room sizes shown are taken from the dimension arrows on the floorplans which represent the maximum dimensions, a tolerance of +/- 5% is allowed. External finishes on certain designs, layouts, window positions and styles may vary, please check with the sales consultant. These floor plans are a guide only and may be subject to change. Area measurements are given as Gross Internal Area (GIA).

Apartment 31

2+ bedroom apartment

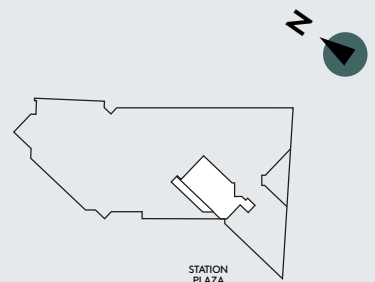
Building	Faregate House
Floor	6
Apt No	31



Total Internal Area	968.4 sq ft	90.0 sq m
Living/Dining	13' 5" x 15' 4"	4090mm x 4665mm
Kitchen	11' 9" x 7' 6"	3585mm x 2280mm
Master Bedroom	11' 4" x 16' 2"	3460mm x 4920mm
Bedroom 2	9' 1" x 11' 6"	2780mm x 3500mm
Study	7' 7" x 11' 6"	2320mm x 3500mm
Balcony	167.9 sq ft	15.6 sq m

Key

WD	Washer Dryer	HEC	Heating and Electrical Components
W	Fitted Wardrobe	C	Cupboard

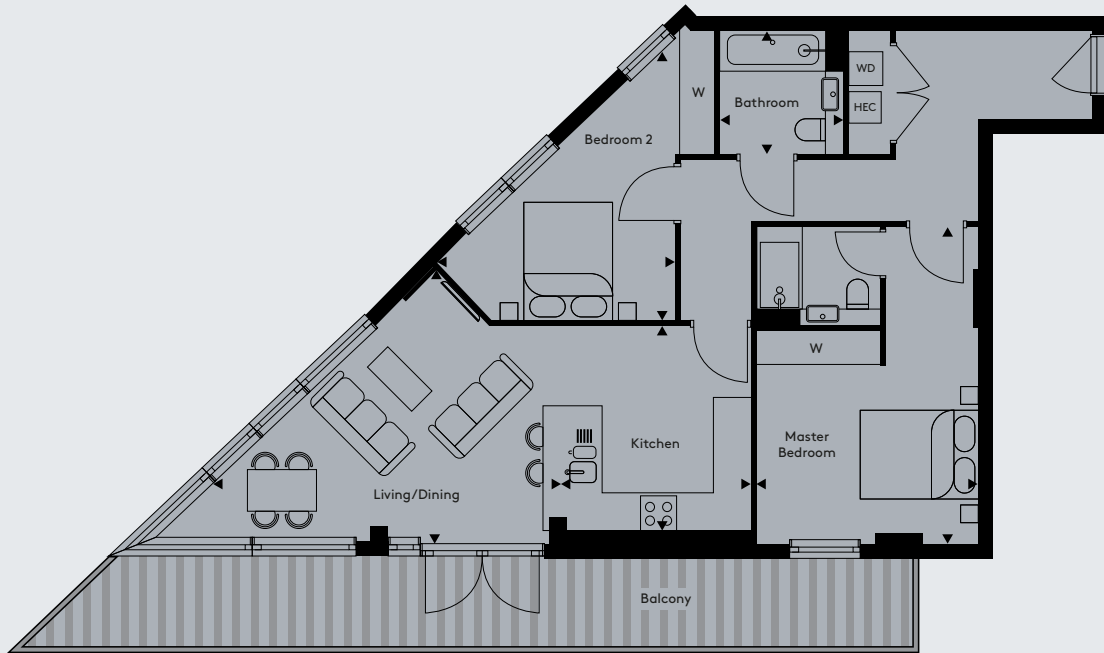


Floorplans not to scale. The room sizes shown are taken from the dimension arrows on the floorplans which represent the maximum dimensions, a tolerance of +/- 5% is allowed. External finishes on certain designs, layouts, window positions and styles may vary, please check with the sales consultant. These floor plans are a guide only and may be subject to change. Area measurements are given as Gross Internal Area (GIA).

Apartment 32

2 bedroom apartment

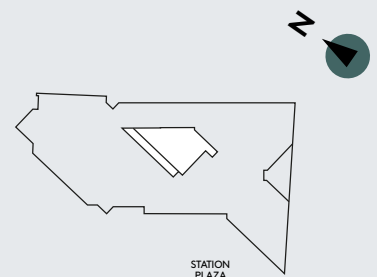
Building	Faregate House
Floor	6
Apt No	32



Total Internal Area	937.2 sq ft	87.1 sq m
Living/Dining	14' 6" x 23' 4"	4410mm x 7100mm
Kitchen	11' 6" x 10' 8"	3495mm x 3255mm
Master Bedroom	12' 4" x 17' 6"	3770mm x 5340mm
Bedroom 2	13' 5" x 16' 2"	4080mm x 4940mm
Balcony	241.0 sq ft	22.4 sq m

Key

WD	Washer Dryer	HEC	Heating and Electrical Components
W	Fitted Wardrobe	C	Cupboard

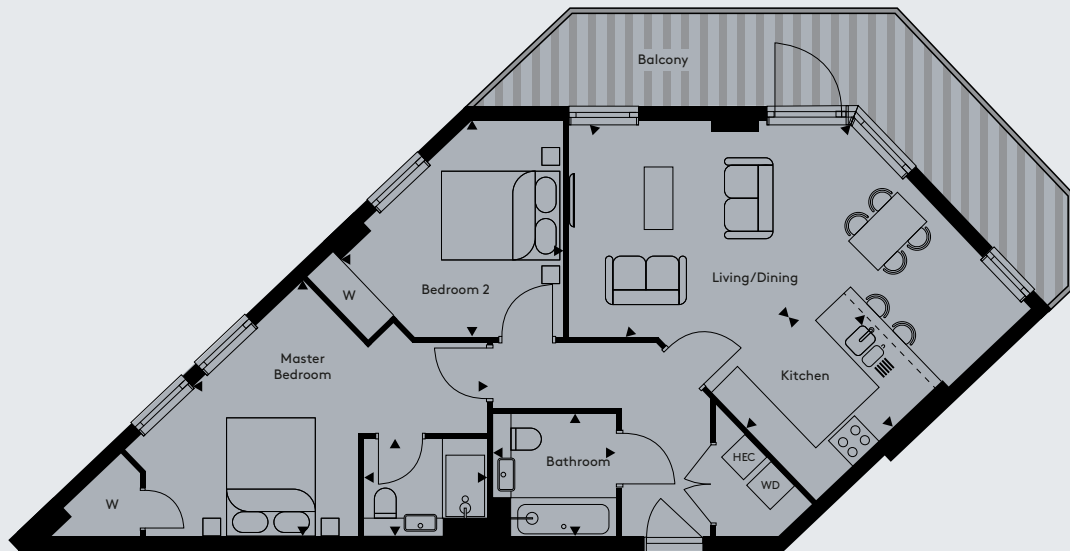


Floorplans not to scale. The room sizes shown are taken from the dimension arrows on the floorplans which represent the maximum dimensions, a tolerance of +/- 5% is allowed. External finishes on certain designs, layouts, window positions and styles may vary, please check with the sales consultant. These floor plans are a guide only and may be subject to change. Area measurements are given as Gross Internal Area (GIA).

Apartment 33

2 bedroom apartment

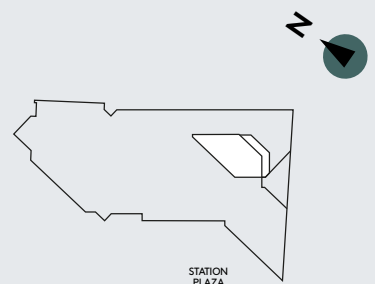
Building	Faregate House
Floor	6
Apt No	33



Total Internal Area	852.2 sq ft	79.2 sq m
Living/Dining	17' 4" x 16' 4"	5275mm x 4970mm
Kitchen	9' 3" x 8' 6"	2820mm x 2580mm
Master Bedroom	14' 2" x 16' 3"	4320mm x 4960mm
Bedroom 2	11' 11" x 12' 4"	3625mm x 3760mm
Balcony	174.3 sq ft	16.2 sq m

Key

WD	Washer Dryer	HEC	Heating and Electrical Components
W	Fitted Wardrobe	C	Cupboard



Floorplans not to scale. The room sizes shown are taken from the dimension arrows on the floorplans which represent the maximum dimensions, a tolerance of +/- 5% is allowed. External finishes on certain designs, layouts, window positions and styles may vary, please check with the sales consultant. These floor plans are a guide only and may be subject to change. Area measurements are given as Gross Internal Area (GIA).

DELIVERING QUALITY NEW DESTINATIONS

We are Solum, a team of people with unique experience designing and delivering new destinations around train stations. Through our creative approach, we reimagine the way that railway land is used so that it can better serve the local community and accommodate high quality new homes in the most connected locations.

DRIVEN BY QUALITY

The quality and the differentiation of our homes is key to our success. From the apartment interiors to the station environments that we create, every detail is designed with the aspirations of our customers in mind.

DELIVERING POSITIVE CHANGE

Our homes are inherently sustainable, located on under-utilised land next to train stations and designed to encourage environmentally friendly living.

Our positive contribution goes beyond the environmental benefits, as the revenue generated from the sale of our homes helps to improve the stations we develop, £64 million of planned investment to date.

And because Solum is a joint venture between Kier Property and Network Rail, over 50% of the profit is reinvested back into the railway for the benefit of the communities it serves.

A new destination by:



A partnership between



Walthamstow Gateway Phase 2 completed

Guildford Coming soon



PUTTING YOU AND YOUR NEW HOME FIRST

It's no secret that while buying a new home is incredibly exciting, it is also the biggest financial commitment you are likely to make. That is why we will go the extra mile to make the experience as positive for you as we possibly can.

No detail is too small to run by our friendly team of experts, who will use creativity, know-how, years of experience, and great teamwork to deliver the right solution for you.



We adhere to the Consumer Code for Home Builders, which protects you as a homebuyer, ensuring that you:

- Are treated fairly
- Know what service levels to expect
- Are given reliable information upon which to make your decisions
- Know how to access speedy, low-cost dispute resolution arrangements if you're dissatisfied

You can find out more about the Code at: www.consumercodeforhomebuilders.com





STEP 1 BUYING YOUR HOME

As your initial point of contact, your sales consultant will guide you through the purchase of your new home and provide information to make the process straightforward. Following exchange of contracts the sales team will introduce you to your customer care manager, whose job it is to support you through the final steps to legal completion and moving into your home.

STEP 2 MOVING IN TO YOUR HOME

Prior to your moving in day, your customer care manager will be in touch to arrange a home demonstration and to set up your digital home user guide. This is important as it will give you all the information you need to get the most out of your new home.

STEP 3 SETTLING IN

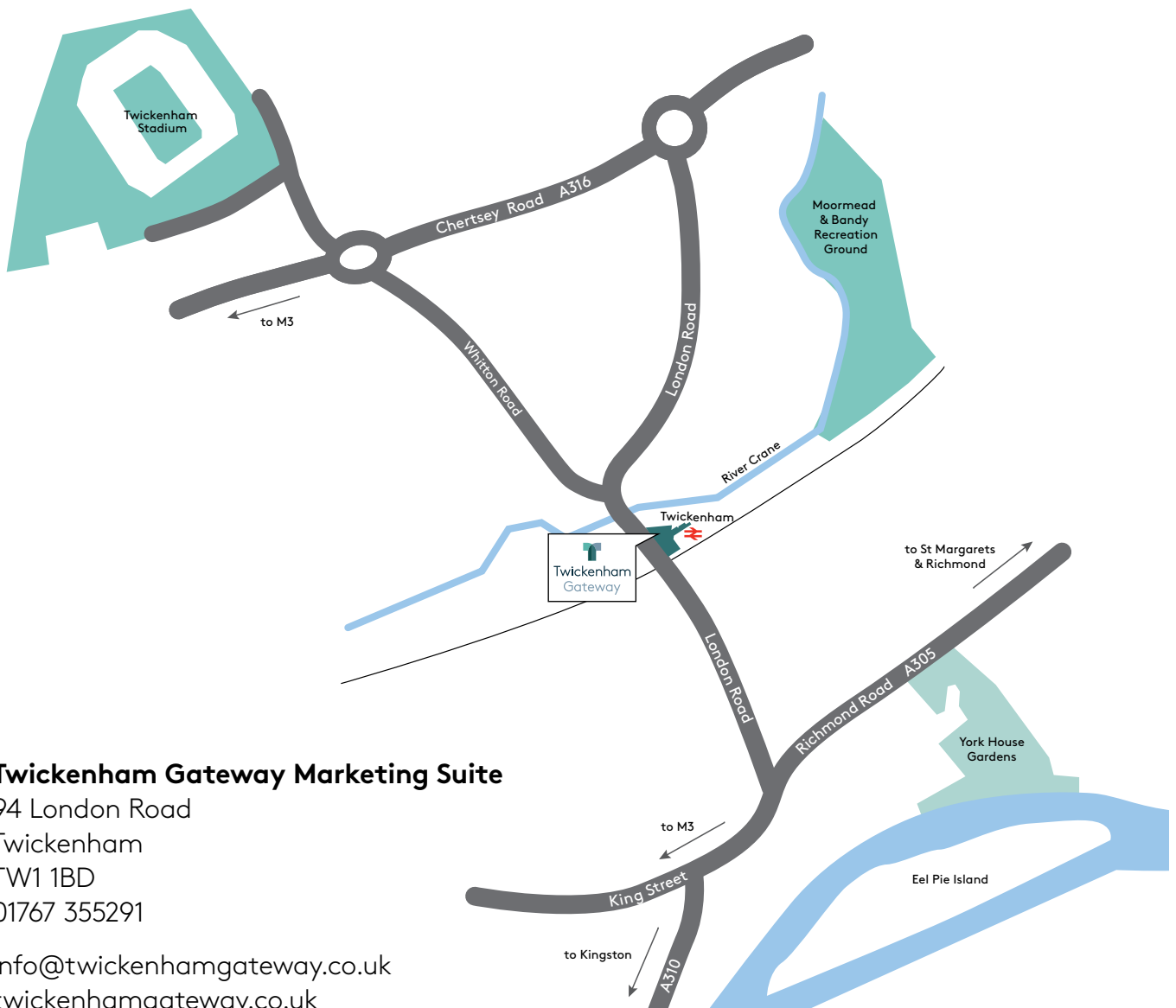
Upon legal completion you'll be able to settle into your new home safe in the knowledge that it is covered by a 10 year NHBC Buildmark Warranty and our customer service team will be in touch 7 days and 9 months after you complete to confirm that you're happy with your home. You can find out more about the 10 year Buildmark Warranty at nhbc.co.uk



HOW TO FIND US

Twickenham Gateway is located at Twickenham Station, on the corner of London Road and next to the River Crane.

Visit our Sales and Marketing Suite, open 7 days a week.



Twickenham Gateway Marketing Suite

94 London Road

Twickenham

TW1 1BD

01767 355291

info@twickenhamgateway.co.uk

twickenhamgateway.co.uk

The information in this document is indicative and is intended to act as a guide only as to the finished product. Accordingly, due to Solum policy of continuous improvement, the finished product may vary from the information provided. These particulars should not be relied upon as accurately describing any of the specific matters described by any order under the Property Misdescriptions Act 1991. This information does not constitute a contract, or warranty. The dimensions given on plans are subject to minor variations and are not intended to be used for carpet sizes, appliance sizes or items of furniture. Area measurements in this document are given as Gross Internal Area (GIA). Twickenham Gateway is a marketing name and will not necessarily form part of the approved postal address. Applicants are advised to contact Solum to ascertain the availability of any particular property.



