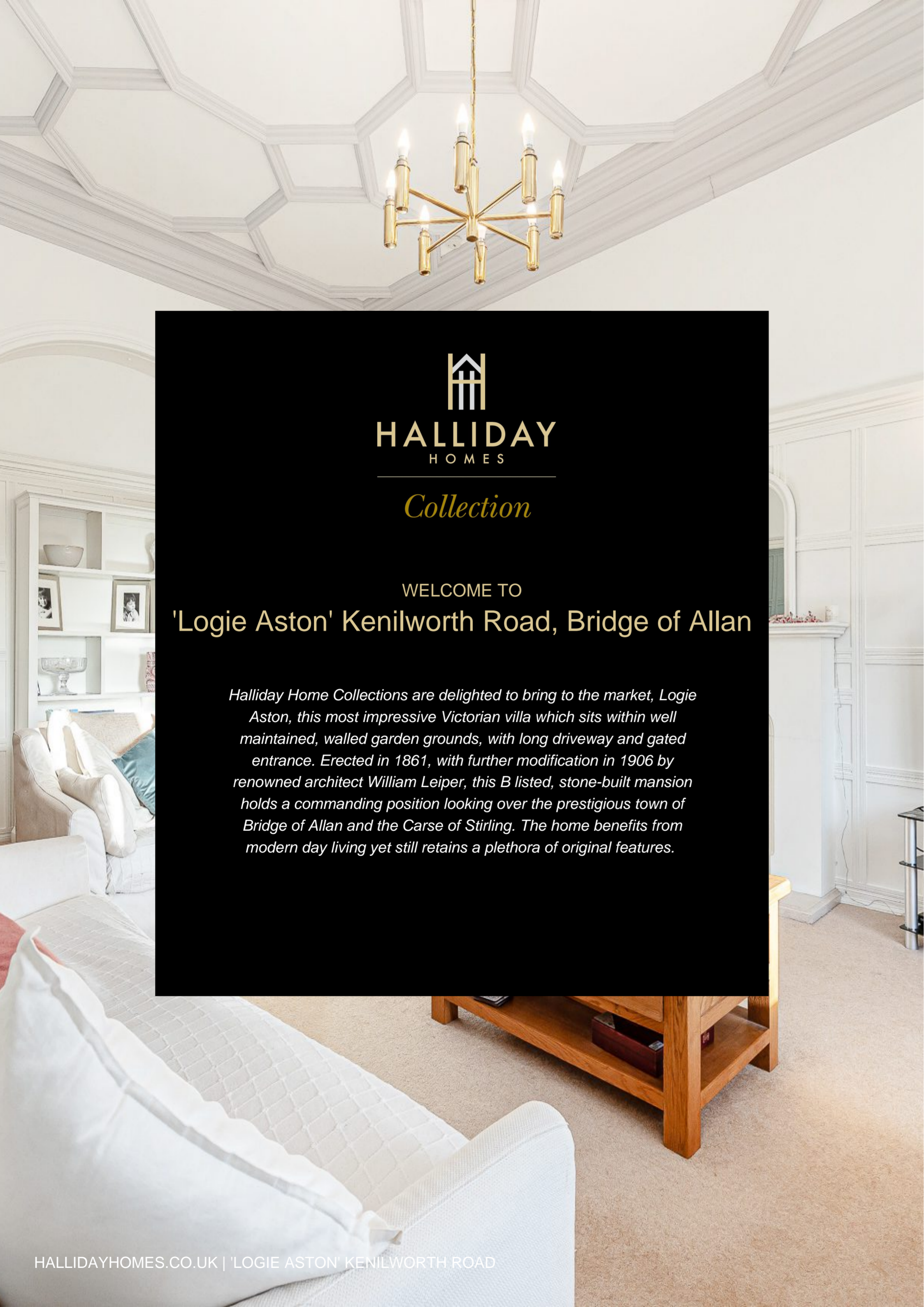


'Logie Aston' Kenilworth Road, Bridge of Allan

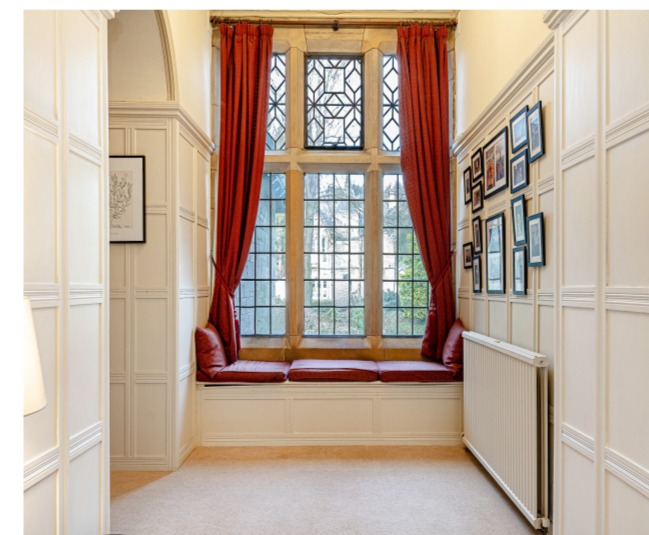




Collection

WELCOME TO
'Logie Aston' Kenilworth Road, Bridge of Allan

Halliday Home Collections are delighted to bring to the market, Logie Aston, this most impressive Victorian villa which sits within well maintained, walled garden grounds, with long driveway and gated entrance. Erected in 1861, with further modification in 1906 by renowned architect William Leiper, this B listed, stone-built mansion holds a commanding position looking over the prestigious town of Bridge of Allan and the Carse of Stirling. The home benefits from modern day living yet still retains a plethora of original features.



4 Beds | 2 Baths | 435m2

THE HOUSE

The internal accommodation, over two levels, comprises from the front of the house;- a south facing vestibule leading into the open plan dining/family/kitchen, conservatory, south facing lounge, superb south and west facing bay windowed drawing room, west facing games room, inner hall which features a leaded-glass window and wood burner, WC/cloakroom, laundry room and a boot room. A decorative staircase leads to first floor level where at the half landing you will find the family sitting room. The upper landing has an inner hall leading to the west wing of the home which has the principle bedroom, jack and jill ensuite and two bedrooms. Off the landing is bedroom four, study, family bathroom and a WC. The south facing rooms have spectacular views towards Stirling Castle, Gargunnoch Hills and the Trossachs beyond.

Traditional features include: leaded mullioned windows, wainscoted walls, high decorative ceilings and cornicing, stone and marble fire surrounds, timber staircase, deep skirtings, column radiators, doors and architraves.





STRIKING IMPRESSIONS

Another superb, northwest facing room with a turreted window, log burner, carpeted flooring, TV point and two radiators

THE HEART OF THE HOME





A CLOSER LOOK







HALLIDAY
H O M E S

Collection

ALL ENQUIRIES

Halliday Homes

Telephone: +44 (0)1786 833811

Email: info@hallidayhomes.co.uk

Website: hallidayhomes.co.uk

 OnTheMarket.com

rightmove 

 The Property
Ombudsman